

PUBLIC LAND SURVEY MONUMENT RECORD

TYPE OF MONUMENT: HARRISON
 ADAMS COUNTY COORDINATES, NAD 83 (2007)

N. 200440.584

E. 573194.203

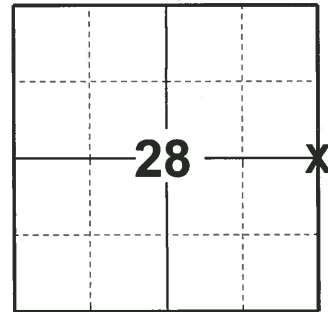
ELEVATION- _____ DATUM _____

FIELD WORK DATE: 04/22/2019

BASIS FOR MONUMENT LOCATION

1974 - PLS 1103 RAN EDM/TRANSIT TRAVERSE AROUND SECTION 27 AND DETERMINED SEARCH AREA FOR INVESTIGATION. INVESTIGATION YIELDED NO EVIDENCE AS TO THE LOCATION OF THE CORNER. SET HARRISON MONUMENT EQUIDISTANT AND ON LINE BETWEEN THE NORTHWEST AND SOUTHWEST CORNERS OF SECTION 27.

2019 - PLS 2675 FOUND HARRISON 4" ABOVE THE GROUND AND 1 WITNESS TREE. THE MONUMENT AGREES WITH THE EXISTING WITNESS. ACCEPTED THE HARRISON AS THE CORNER LOCATION. SET 4 NEW TIES AND MEASURED TO THE EXISTING WITNESS.



LOCATION
 (INDICATE CORNER BY "X")

SEAL:

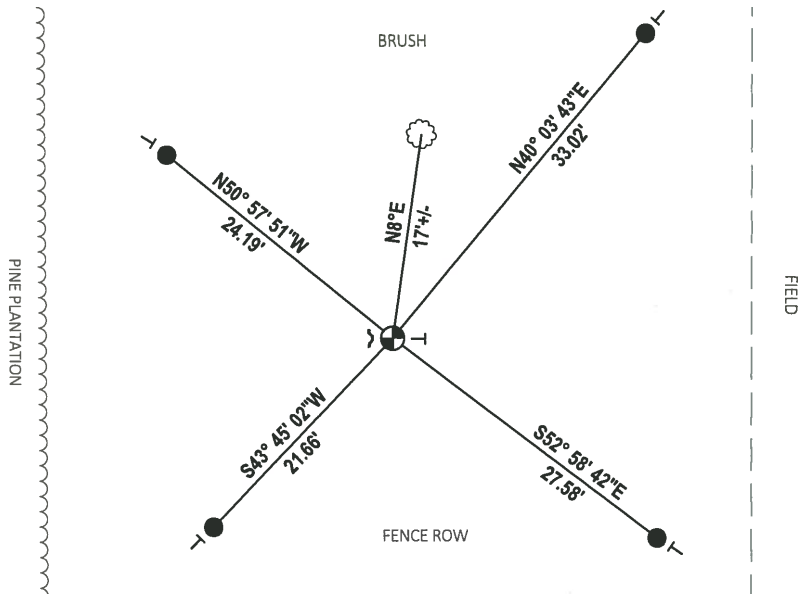


DATA SHOWN HERE ON THIS TIE SHEET IS CORRECT AND COMPLETE TO THE BEST OF MY KNOWLEDGE AND BELIEF.

PROFESSIONAL LAND SURVEYOR

DATE 5/1/19

TIE SKETCH



- SET 3/4" x 18" IRON REBAR, 1.50#/FT
- ⊕ FOUND HARRISON MONUMENT
- ↗ STEEL FENCE POST
- ┆ VINYL "T" POST
- ☁ WITNESS TREE

ADAMS COUNTY

Survey Monument Record

TYPE OF MONUMENT: 30" Harrison standard

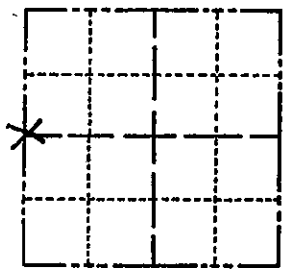
STATE PLANE COORDINATES: N _____
E _____

ELEVATION — M.S.L. DATUM: _____

THETA ANGLE: _____

FIELD BOOK: _____ PAGE _____

CORNER NO. 553
SECTION 27
TOWN 17
RANGE 7



LOCATION
(Indicated by 'X')

SEAL:



BASIS FOR MONUMENT LOCATION

(Use reverse side if necessary)

Show info such as: History of corner, with reference to Vol. and pg. dates, surveyor; exact description of monument replaced; if location computed, by taped or EDM traverse; landowner remarks, etc.

Ran EDM/transit traverse around Section 27 and determined search area for investigation.

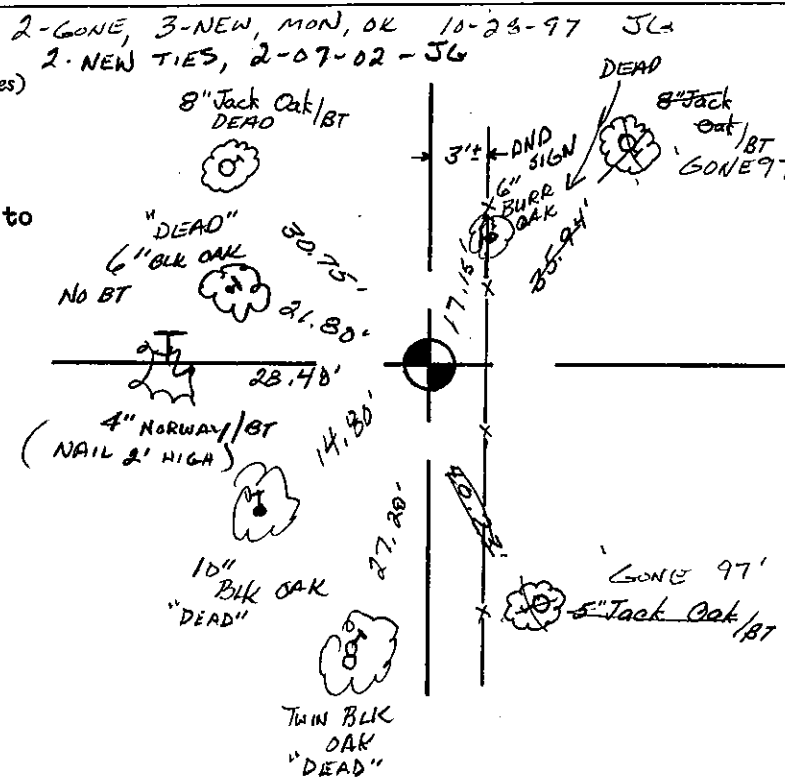
Investigation yielded no evidence as to the location of the corner. Set Harrison monument equidistant and on line between the Northwest and Southwest corners of Section 27.

CORNER O.K. 3-15-77 GR-55
" " 8-26-82 PK-55
" " 12-15-86 GR
" " 7-27-92 JG

CERTIFIED CORRECT:
Dale C. Hagen
Registered Land Surveyor
DATE: October 28 1974

TIE SKETCH

(Show at least four ties)



* THIS CORNER NEEDS TO BE RETIED, BRING CHAIN SAW. ALL TREE ARE DEAD OR BLOWN OVER, A REAL MESS,
9-17-07-JG

NOTE

Ties in trees to nail in disc.