

26
SECTION

17
TOWN

07
RANGE

ADAMS COUNTY

COUNTY CORNER NO: 99

ROMPORTOL ID: 41707262000

PUBLIC LAND SURVEY MONUMENT RECORD

TYPE OF MONUMENT: HARRISON
ADAMS COUNTY COORDINATES, NAD 83 (2007)

N. 200470.338

E. 583746.986

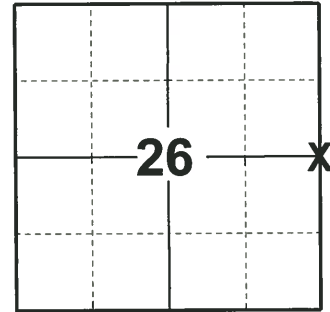
ELEVATION- _____ DATUM _____

FIELD WORK DATE: 04/22/2019

BASIS FOR MONUMENT LOCATION

1979 - PLS 1478 SET MONUMENT EQUIDISTANT AND ON LINE BETWEEN ADJACENT SECTION CORNERS. NO EVIDENCE OF ANY PREVIOUS MONUMENTATION WAS FOUND. NO RECORD OF MONUMENTATION SUBSEQUENT TO THE ORIGINAL WAS FOUND.

2019 - PLS 2675 FOUND HARRISON 4" ABOVE THE GROUND AND 3 WITNESSES. THE MONUMENT AGREES WITH ALL 3 WITNESS TREES. ACCEPTED THE HARRISON AS THE CORNER LOCATION. SET 4 NEW TIES AND MEASURED TO THE EXISTING WITNESS TREES.



LOCATION

(INDICATE CORNER BY "X")

SEAL:

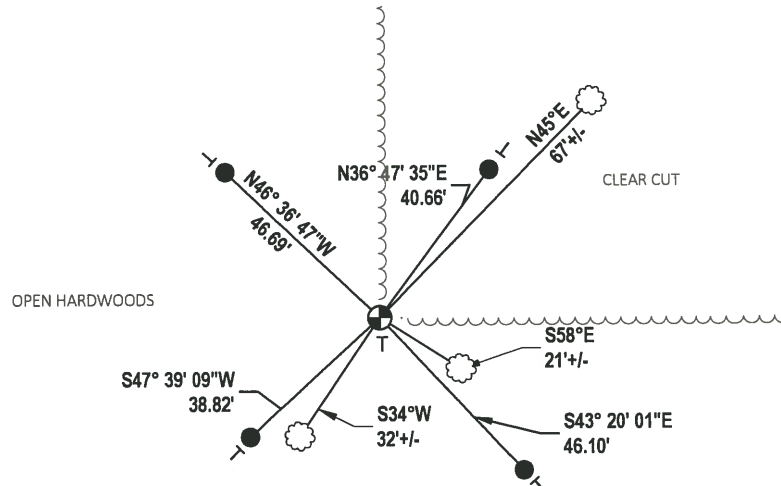
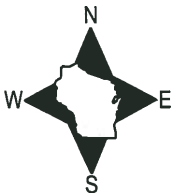


DATA SHOWN HERE ON THIS TIE SHEET IS CORRECT AND COMPLETE TO THE BEST OF MY KNOWLEDGE AND BELIEF.

PROFESSIONAL LAND SURVEYOR

DATE 5/1/19

- TIE SKETCH

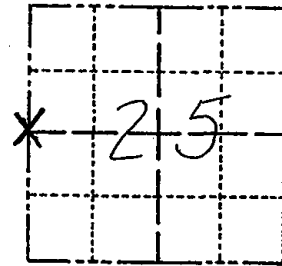


- SET 3/4" x 18" IRON REBAR, 1.50#/FT
- ⊕ FOUND HARRISON MONUMENT
- VINYL "T" POST
- ☼ WITNESS TREE

Government Land Corner Certificate

ADAMS County
 TYPE OF MONUMENT: HARRISON
 STATE PLANE COORDINATES: N 43° 54' 57.6"
 HAND HELD NAVIGATION W 89° 37' 03.5"
 ELEVATION — M.S.L. DATUM: _____
 THETA ANGLE: _____
 FIELD BOOK: 80 PAGE 79
 DRAWN BY: GREG RHINEHART

CORNER NO. 99
 SECTION 25
 TOWN 17
 RANGE 7



LOCATION
(Indicated by 'X')

SEAL:



DATA SHOWN ~~HEREON~~
 CERTIFIED CORRECT:

Gregory P Rhinehart
 Registered Land Surveyor

DATE: 12/11/79

BASIS FOR MONUMENT LOCATION

Show info such as: History of corner, with reference to Vol. and pg., dates, surveyor; exact description of monument replaced; if location computed, by taped or EDM traverse; landowner remarks, etc. (Use reverse side if necessary)

Set monument equidistant and on line between adjacent section corners. No evidence of any previous monumentation was found. No record of monumentation subsequent to the original was found.

TIE SKETCH

Show at least four ties, also fence lines, roads, topo, size and type of witness trees and if off road - best way to arrive at corner.

