

30
SECTION

17
TOWN

07
RANGE

ADAMS COUNTY

COUNTY CORNER NO.: 103

ROMPORTOL ID: 41707300000

PUBLIC LAND SURVEY MONUMENT RECORD

TYPE OF MONUMENT: HARRISON
ADAMS COUNTY COORDINATES, NAD 83 (2007)

N. 197789.038

E. 562662.987

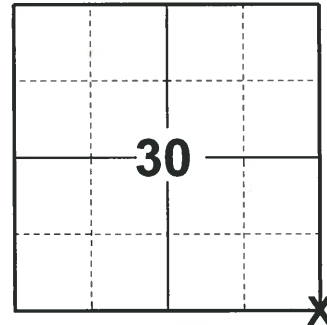
ELEVATION- DATUM

FIELD WORK DATE: 04/23/2019

BASIS FOR MONUMENT LOCATION

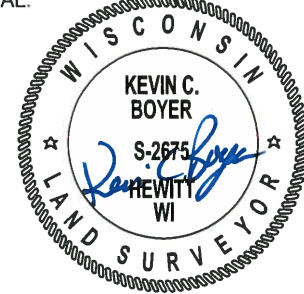
1975 - PLS 878 EXCAVATED AREA IN INTERSECTION WITH BACKHOE. FOUND NOTHING. ALSO SEARCHED IN AREA WHERE CORNER WAS SET. FOUND NOTHING. POINT SET BY COORDINATES COMPUTED FROM AN EDM TRAVERSE. ORIGINAL NOTES AND POSSESSION LINES TAKEN INTO ACCOUNT. IT SHOULD BE NOTED THAT THE SOUTH EAST CORNER OF THIS SECTION ALSO FALLS CONSIDERABLY TO THE EAST OF 6TH AVE.

2019 - PLS 2675 FOUND HARRISON 12" BELOW THE ROAD SURFACE, 1 TIE, AND 2 WITNESSES. THE MONUMENT AGREES WITH THE EXISTING TIE AND WITNESSES. ACCEPTED THE HARRISON AS THE CORNER LOCATION. SET 4 NEW TIES AND MEASURED TO THE EXISTING TIE AND WITNESSES.



LOCATION
(INDICATE CORNER BY "X")

SEAL:



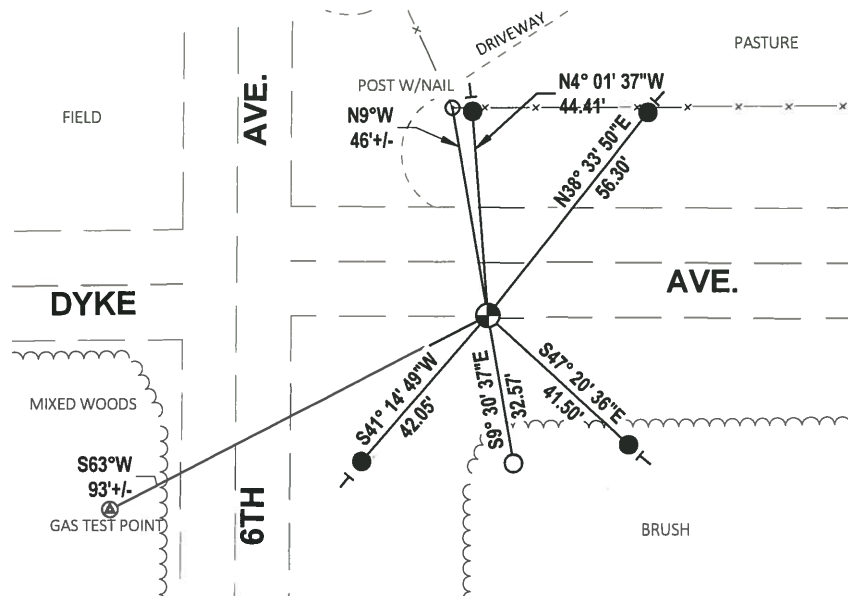
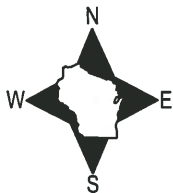
DATA SHOWN HERE ON THIS TIE SHEET IS CORRECT AND COMPLETE TO THE BEST OF MY KNOWLEDGE AND BELIEF.

PROFESSIONAL LAND SURVEYOR

DATE 5/1/19

TIE SKETCH

NOTE: THE CORNER LANDS 11± SOUTH OF DYKE AVE. CENTERLINE AND 55± EAST OF 6TH AVE. CENTERLINE.



- SET 3/4" x 18" IRON REBAR, 1.50#/FT
- FOUND 3/4" IRON ROD
- ⊕ FOUND HARRISON MONUMENT
- VINYL "T" POST

ADAMS COUNTY

Survey Monument Record

TYPE OF MONUMENT: Harrison standard

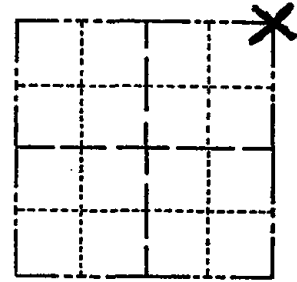
STATE PLANE COORDINATES: N _____
E _____

ELEVATION — M.S.L. DATUM: _____

THETA ANGLE: _____

FIELD BOOK: file PAGE _____

CORNER NO. 864⁽¹⁰³⁾
SECTION 31
TOWN 17
RANGE 7



LOCATION
(Indicated by 'X')

SEAL:



BASIS FOR MONUMENT LOCATION

(Use reverse side if necessary)

Show info such as: History of corner, with reference to Vol. and pg, dates, surveyor; exact description of monument replaced; if location computed, by taped or EDM traverse; landowner remarks, etc.

Excavated area in intersection with backhoe. Found nothing. Also searched in area where we set the corner. Found nothing. Point set by coordinates computed from an EDM traverse. Original notes and possession lines taken into account. It should be noted that the southeast corner of this section also falls considerably to the east of 6th Ave.

CORNER O.K. 3-15-77 GR-SS
" " 5-26-82 PK-SS
" " 12-15-86 CA
" " 11-25-91 KZ-GR
1 GONE / 2 NEW TIES 1-29-97 CR-JG

CERTIFIED CORRECT:

Anthony B. Kiedrowski
Registered Land Surveyor

DATE: 11/19/75

TIE SKETCH

OK 2-07-02-JG
OK 9-13-07-SG

(Show at least four ties), NEW TIE 2-21-12 SS

