

26
SECTION

17
TOWN

07
RANGE

ADAMS COUNTY

COUNTY CORNER NO.: 110

ROMPORTOL ID: 41707260020

PUBLIC LAND SURVEY MONUMENT RECORD

TYPE OF MONUMENT: HARRISON
ADAMS COUNTY COORDINATES, NAD 83 (2007)

N. 197810.875

E. 581127.441

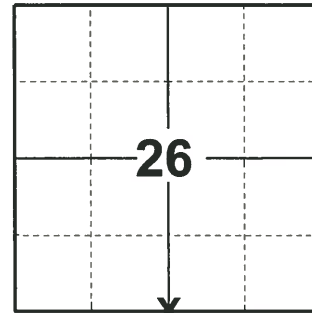
ELEVATION- - - DATUM - -

FIELD WORK DATE: 04/18/2019

BASIS FOR MONUMENT LOCATION

1974 - PLS 1103 RAN EDM/TRANSIT TRAVERSE OF SECTION 35 AND ADJACENT SECTIONS. EXCAVATED WITH BACKHOE AND FOUND ONLY NAIL AS SET Y HERMAN HOLZMILLER, SURVEYOR, FOR A SURVEY TO THE SOUTH. ESTABLISHED QUARTER CORNER AT THE CORNER SET BY HOLZMILLER.

2019 - PLS 2675 FOUND HARRISON 4" BELOW THE ROAD SURFACE, 1 TIE, AND 1 WITNESS. THE MONUMENT AGREES WITH THE EXISTING TIE AND WITNESS. ACCEPTED THE HARRISON AS THE CORNER LOCATION. SET 4 NEW TIES AND MEASURED TO THE EXISTING TIE AND WITNESS.



LOCATION
(INDICATE CORNER BY "X")

SEAL:



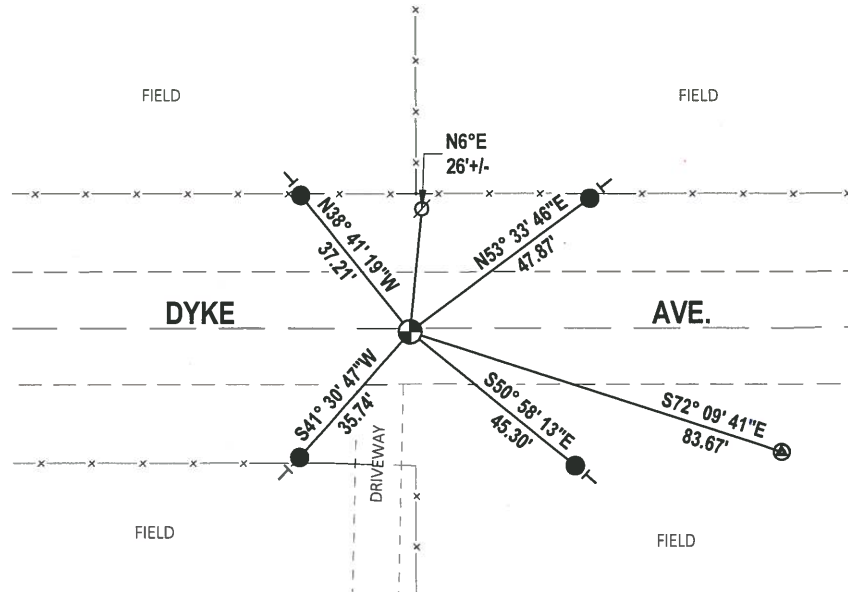
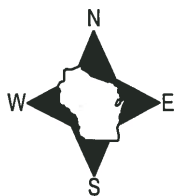
DATA SHOWN HERE ON THIS TIE SHEET IS CORRECT AND COMPLETE TO THE BEST OF MY KNOWLEDGE AND BELIEF.

PROFESSIONAL LAND SURVEYOR

DATE 5/1/19

- TIE SKETCH

NOTE: THE CORNER LANDS 1± SOUTH OF DYKE AVE. CENTERLINE.



- SET 3/4" x 18" IRON REBAR, 1.50#/FT
- ⊕ FOUND HARRISON MONUMENT
- ⊙ WITNESS POWER POLE
- VINYL "T" POST
- ⊗ FOUND STONE WITH CHISELED 'X'

ADAMS COUNTY

Survey Monument Record

TYPE OF MONUMENT: Standard Harrison

STATE PLANE COORDINATES: N _____
E _____

ELEVATION — M.S.L. DATUM: _____

THETA ANGLE: _____

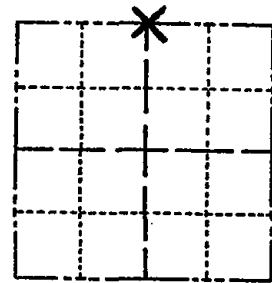
FIELD BOOK: _____ PAGE _____

CORNER NO. 569

SECTION 35

TOWN 17

RANGE 7



LOCATION
(Indicated by 'X')

SEAL:

BASIS FOR MONUMENT LOCATION

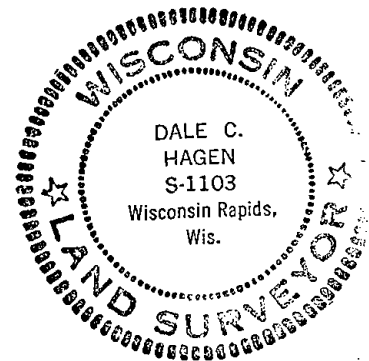
(Use reverse side if necessary)

Show info such as: History of corner, with reference to Vol. and pg. dates, surveyor; exact description of monument replaced; if location computed, by taped or EDM traverse; landowner remarks, etc.

Ran EDM/transit traverse of Section 35 and adjacent sections.

Excavated with backhoe and found only nail as set by Herman Holzmilller, Surveyor, for a survey to the South.

Established Quarter corner at the corner set by Holzmilller.



CORNER	O.K.	3-28-77	GR-SS
"	"	5-26-82	PK-SS
"	"	1-22-87	JL-SS
"	"	12-12-91	KZ-JG
"	"	2-19-97	JG-SS

CERTIFIED CORRECT:

Dale C. Hagen
Registered Land Surveyor

DATE: October 2, 1974

TIE SKETCH *OK - 2-13-02 - JG*
OK, 9-18-07 - JG
(Show at least four ties) *OK 03-05-12 MS*

NOTE

Ties in trees to nail in disc.

