

PUBLIC LAND SURVEY MONUMENT RECORD

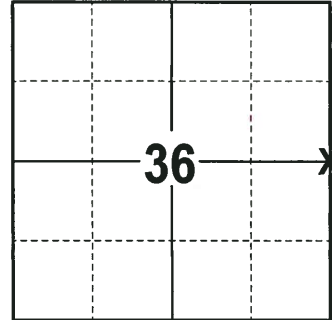
TYPE OF MONUMENT: HARRISON
 ADAMS COUNTY COORDINATES, NAD 83 (2007)

N. 195157.054

E. 557650.101

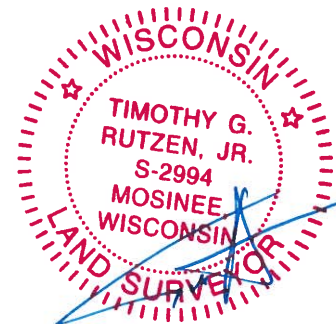
ELEVATION- --- DATUM ---

FIELD WORK DATE: 11/30/2017



LOCATION
 (INDICATE CORNER BY "X")

SEAL:

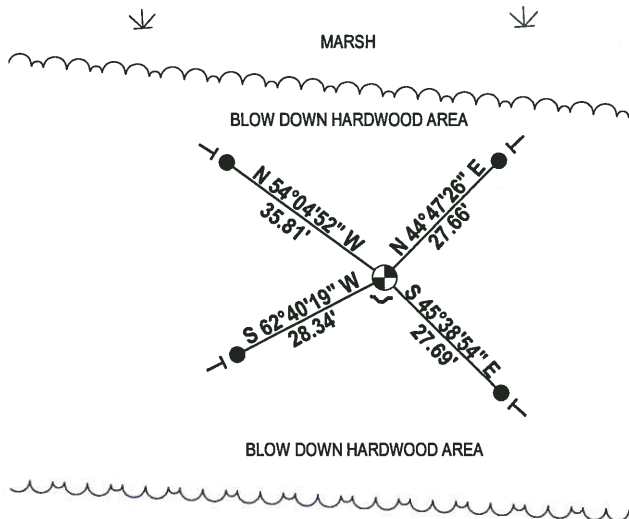
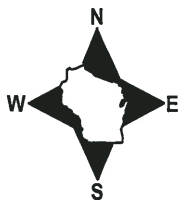


DATA SHOWN HERE ON THIS TIE SHEET IS CORRECT AND COMPLETE TO THE BEST OF MY KNOWLEDGE AND BELIEF.

PROFESSIONAL LAND SURVEYOR

DATE 12-21-17

TIE SKETCH



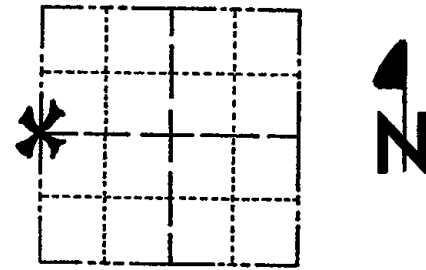
- 3/4" x 18" IRON REBAR SET, 1.50#/FT
- ⊕ HARRISON FOUND
- ~ STEEL FENCE POST
- VINYL "T" POST

ADAMS COUNTY

Survey Monument Record

TYPE OF MONUMENT: Harrison standard
 STATE PLANE COORDINATES: N _____
 E _____
 ELEVATION — M.S.L. DATUM: _____
 THETA ANGLE: _____
 FIELD BOOK: file PAGE _____

CORNER NO. 860
 SECTION 31
 TOWN 17 N
 RANGE 7 E



LOCATION (Indicated by 'X')
 SEAL:



BASIS FOR MONUMENT LOCATION

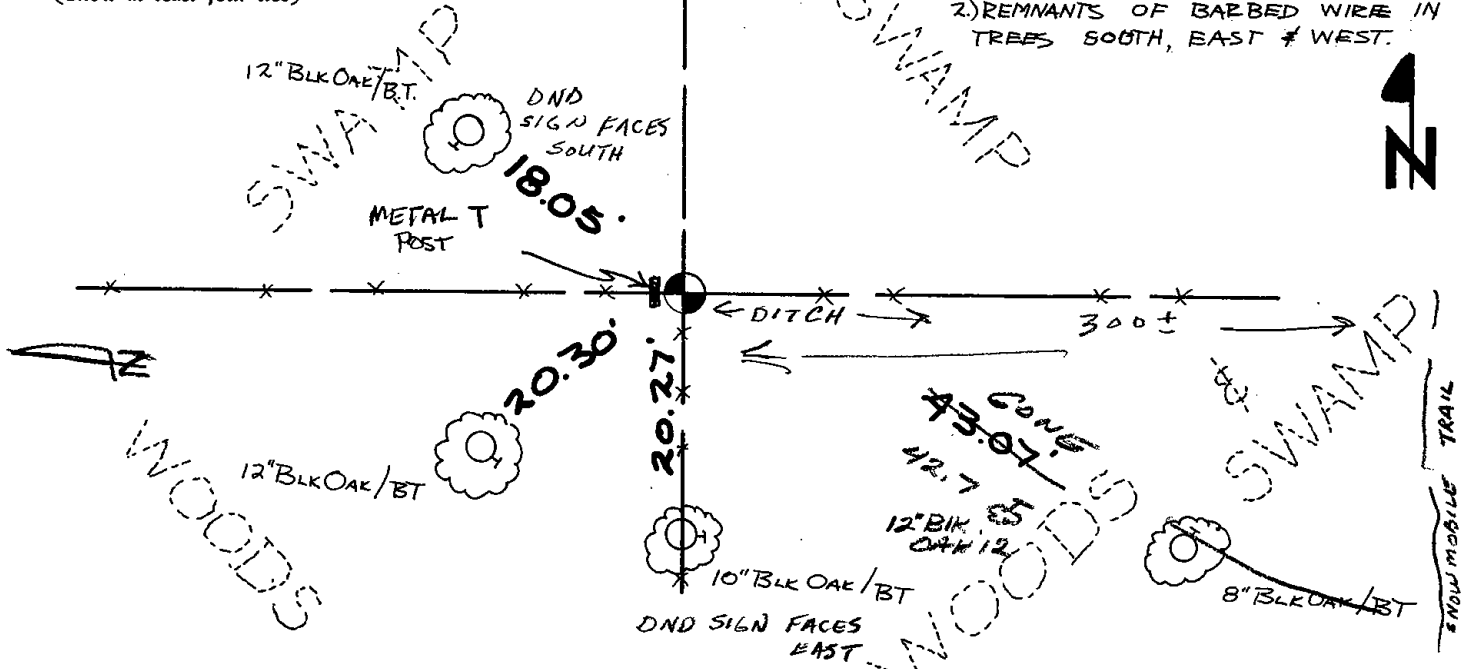
(Use reverse side if necessary)
 Show info such as: History of corner, with reference to Vol. and pg, dates, surveyor; exact description of monument replaced; if location computed, by taped or EDM traverse; landowner remarks, etc.

Old remnants of fence lines is all we could find for evidence of the corner. Point monumented is half way between section corners, but not on a straight line. Entire section traversed to verify location.

- CORNER O.T. 3-15-77 GR-SS
- " " 8-2-82 PK-SS
- " " 3-20-87 SS
- " " 7-20-92 JG
- " " 2-13-02 JG

CERTIFIED CORRECT:
Anthony B. Kiedrowski
 Registered Land Surveyor
 DATE: 1/23/76

TIE SKETCH OK, 9-13-87-JG
 (Show at least four ties)
 GONE | NEW 3-2-12 SS



- NOTES:
 1) TIES IN TREES TO NAIL & DISC
 2) REMNANTS OF BARBED WIRE IN TREES SOUTH, EAST & WEST.

FOLLOW SNOWMOBILE TRAIL NORTH TO FENCE LINE, DITCH, PROPERTY CHANGE CORNER IS 300± WEST