

32
SECTION

17
TOWN

07
RANGE

ADAMS COUNTY

COUNTY CORNER NO.: 116

ROMPORTOL ID: 41707322000

PUBLIC LAND SURVEY MONUMENT RECORD

TYPE OF MONUMENT: HARRISON
ADAMS COUNTY COORDINATES, NAD 83 (2007)

N. 195160.762

E. 567954.676

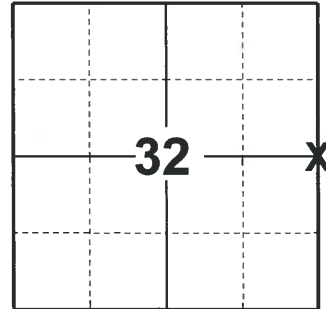
ELEVATION- - - - DATUM - - - -

FIELD WORK DATE: 04/24/2019

BASIS FOR MONUMENT LOCATION

1982 - PLS 1444 EXCAVATED WITH BACKHOE, FOUND NO TRACE OF ORIGINAL CORNER OR ANY RESURVEY CORNER. SET HARRISON EQUIDISTANT AND ON LINE BETWEEN SECTION CORNERS.

2019 - PLS 2675 FOUND HARRISON 4" BELOW THE ROAD SURFACE AND 4 TIES. ACCEPTED THE HARRISON AS THE CORNER LOCATION. SET 4 NEW TIES AND MEASURED TO THE 4 EXISTING TIES.



LOCATION
(INDICATE CORNER BY "X")

SEAL:



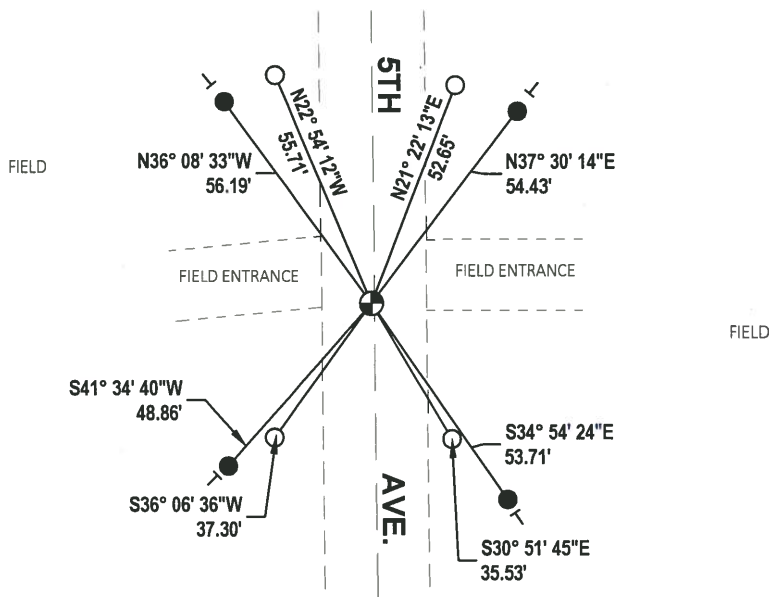
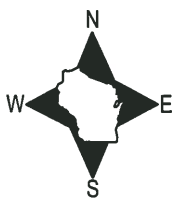
DATA SHOWN HERE ON THIS TIE SHEET IS CORRECT AND COMPLETE TO THE BEST OF MY KNOWLEDGE AND BELIEF.

PROFESSIONAL LAND SURVEYOR

DATE 5/1/19

TIE SKETCH

NOTE: THE CORNER LANDS 1± WEST OF 5TH AVE CENTERLINE.

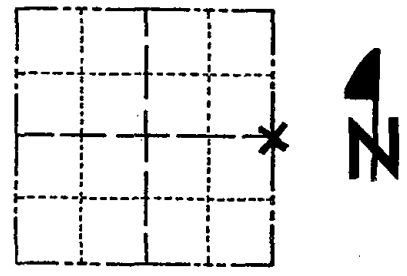


- SET 3/4" x 18" IRON REBAR, 1.50#/FT
- FOUND 3/4" IRON ROD
- ⊕ FOUND HARRISON MONUMENT
- ⊥ VINYL "T" POST

Government Land Corner Certificate

ADAMS County
 TYPE OF MONUMENT: HARRISON
 STATE PLANE COORDINATES: N _____
 E _____
 ELEVATION — M.S.L. DATUM: _____
 THETA ANGLE: _____
 FIELD BOOK: 92 PAGE 67
 DRAWN BY: LANCE HABECK

CORNER NO. 116
 SECTION 32
 TOWN 17
 RANGE 7



LOCATION
(Indicated by 'X')

BASIS FOR MONUMENT LOCATION

Show info such as: History of corner, with reference to Vol. and pg., dates, surveyor; exact description of monument replaced; if location computed, by taped or EDM traverse; landowner remarks, etc. (Use reverse side if necessary)

Excavated with backhoe, found no trace of original corner or any resurvey corner. Set corner equidistant and on line between Section corners.

SEAL:



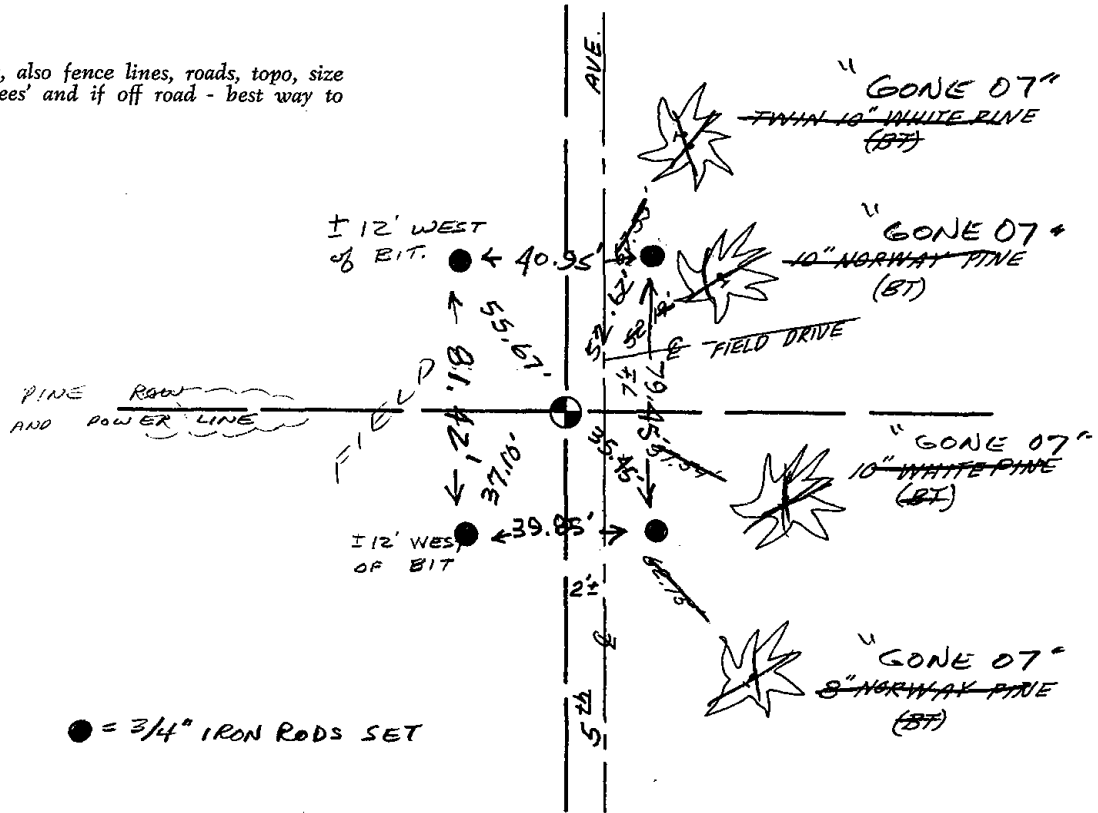
DATA SHOWN HERE ON
CERTIFIED CORRECT:

Lance J. Habeck
Registered Land Surveyor

DATE: 5/7/82

TIE SKETCH

Show at least four ties, also fence lines, roads, topo, size and type of witness trees and if off road - best way to arrive at corner.



● = 3/4" IRON RODS SET

