

35  
SECTION

17  
TOWN

07  
RANGE

# ADAMS COUNTY

COUNTY CORNER NO: 119

ROMPORTOL ID: 41707352000

## PUBLIC LAND SURVEY MONUMENT RECORD

TYPE OF MONUMENT: HARRISON  
ADAMS COUNTY COORDINATES, NAD 83 (2007)

N. 195211.029

E. 583849.869

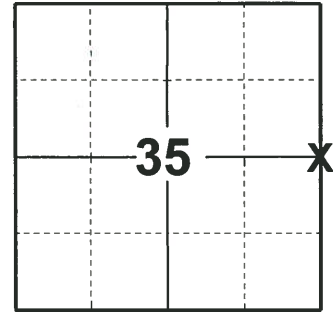
ELEVATION- \_\_\_\_\_ DATUM \_\_\_\_\_

FIELD WORK DATE: 04/23/2019

### BASIS FOR MONUMENT LOCATION

1974 - PLS 1103 RAN EDM/TRANSIT TRAVERSE AROUND SECTION 34 AND 35 AND ADJACENT SECTIONS. HAND DUG IN SEARCH AREA, BUT COULD NOT FIND ANY EVIDENCE OF THE CORNER OR ANY REMONUMENTATION. SET CORNER EQUIDISTANT BETWEEN NORTHEAST AND SOUTHEAST SECTION CORNERS.

2019 - PLS 2675 FOUND HARRISON 4" ABOVE THE GROUND AND 2 WITNESSES. THE MONUMENT AGREES WITH BOTH WITNESSES. ACCEPTED THE HARRISON AS THE CORNER LOCATION. SET 4 NEW TIES AND MEASURED TO THE EXISTING WITNESSES.



LOCATION  
(INDICATE CORNER BY "X")

SEAL:

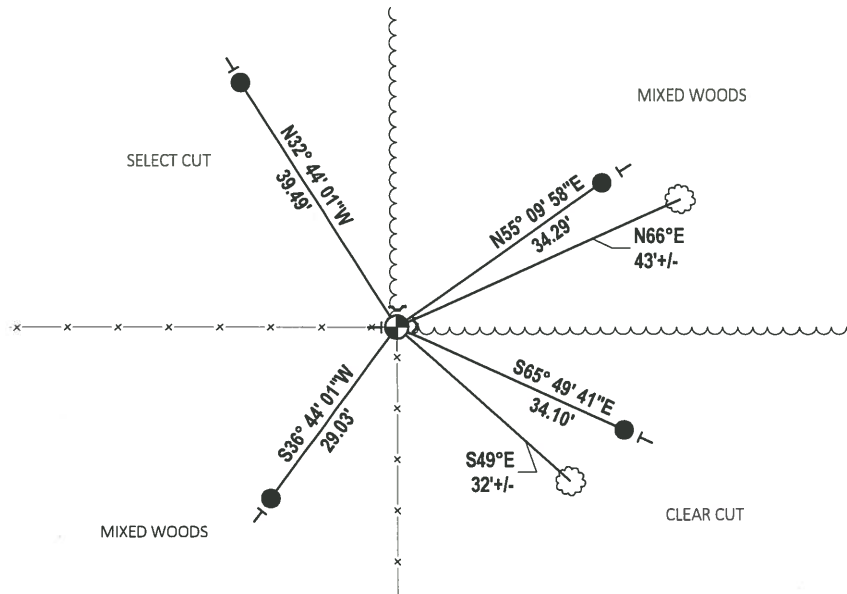


DATA SHOWN HERE ON THIS TIE SHEET IS CORRECT AND COMPLETE TO THE BEST OF MY KNOWLEDGE AND BELIEF.

PROFESSIONAL LAND SURVEYOR

DATE 5/1/19

### TIE SKETCH



- SET 3/4" x 18" IRON REBAR, 1.50#/FT
- ⊕ FOUND HARRISON MONUMENT
- ┘ STEEL FENCE POST
- └ VINYL "T" POST
- ☉ WITNESS TREE

# ADAMS COUNTY

## Survey Monument Record

TYPE OF MONUMENT: Standard Harrison

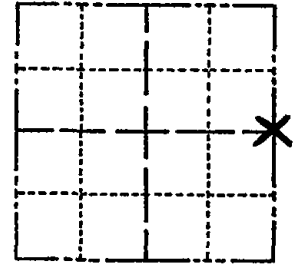
STATE PLANE COORDINATES: N 43° 54' 05.4"  
HAND HELD NAVIGATION W 89° 37' 02.6"

ELEVATION — M.S.L. DATUM: \_\_\_\_\_

THETA ANGLE: \_\_\_\_\_

FIELD BOOK: \_\_\_\_\_ PAGE \_\_\_\_\_

CORNER NO. 572  
SECTION 35  
TOWN 17  
RANGE 7



LOCATION  
(Indicated by 'X')

### BASIS FOR MONUMENT LOCATION

(Use reverse side if necessary)

Show info such as: History of corner, with reference to Vol. and pg. dates, surveyor; exact description of monument replaced; if location computed, by taped or EDM traverse; landowner remarks, etc.

Ran EDM/transit traverse around Sections 34 and 35 and adjacent sections.

Hand dug in search area, but could not find any evidence of the corner or any remonumentation.

Set corner equidistant between Northeast and Southeast section corners.

SEAL:



CERTIFIED CORRECT:

*Dale C. Hagen*  
Registered Land Surveyor  
DATE: October 2, 1974

CORNER	O.K.	3-28-77	GRSS
"	"	4-12-82	CR-55
"	"	7-27-92	JG
"	"	12-1-97	SS

TIE SKETCH  
" " 2-27-02 - JG  
1-GONE, 1-NEW, 9-18-07 - JG  
(Show at least four ties) 1-10-12 2-NEW TIES GR

### NOTE:

Ties in trees to nail in disc.

