

32
SECTION

18
TOWN

07
RANGE

ADAMS COUNTY

COUNTY CORNER NO: 124

ROMPORTOL ID: 41807320020

PUBLIC LAND SURVEY MONUMENT RECORD

TYPE OF MONUMENT: 1-1/4" IRON ROD
ADAMS COUNTY COORDINATES, NAD 83 (2007)

N. 224456.151

E. 565040.278

ELEVATION- DATUM

FIELD WORK DATE: 01/09/2018

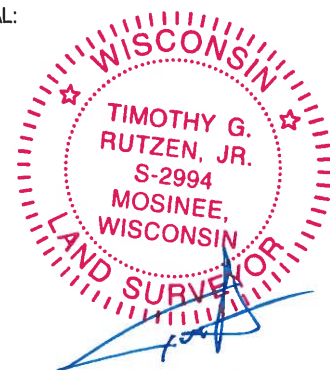
BASIS FOR MONUMENT LOCATION

2017 - PLS 2994 NO TIE SHEET ON FILE OR RECORD OF CORNER. FOUND A 1-1/4" IRON ROD 4" ABOVE THE GROUND SURFACE. VERIFIED THE CORNER LOCATION USING SINGLE PROPORTION AND VERIFY IT BEING ONLINE BETWEEN THE SW AND SE CORNERS OF SECTION 32. ACCEPTED THE 1-1/4" IRON ROD AS THE CORNER. SET AND MEASURED TO 4 NEW TIES.



LOCATION
(INDICATE CORNER BY "X")

SEAL:



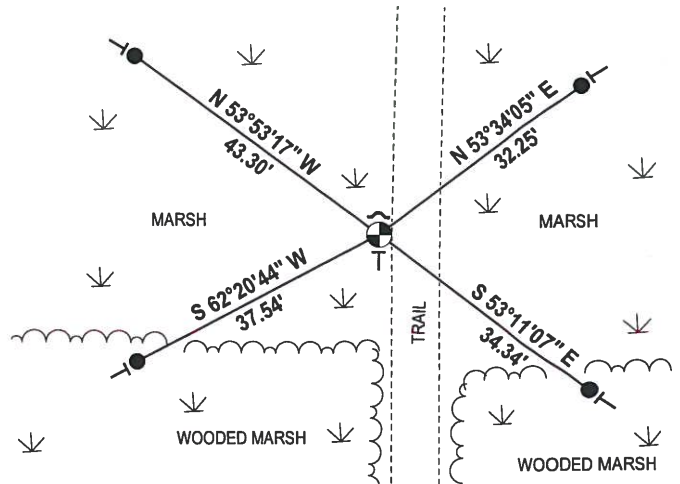
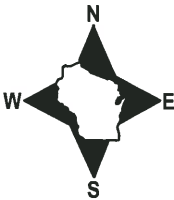
DATA SHOWN HERE ON THIS TIE SHEET IS CORRECT AND COMPLETE TO THE BEST OF MY KNOWLEDGE AND BELIEF.

PROFESSIONAL LAND SURVEYOR

DATE 2-2-18

- TIE SKETCH

NOTE: THE CORNER FALLS 8± WEST OF THE CENTERLINE OF THE TRAIL.



- 3/4" x 48" IRON REBAR SET, 1.50#/FT
- ⊕ 1-1/4" IRON ROD FOUND
- ~ STEEL FENCE POST
- VINYL "T" POST

NO CHARGE

Government Land Corner Certificate

ADAMS County

TYPE OF MONUMENT: Harrison

STATE PLANE COORDINATES: N _____
E _____

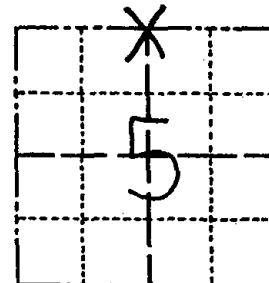
ELEVATION — M.S.L. DATUM: _____

THETA ANGLE: _____

FIELD BOOK: 83 PAGE 107

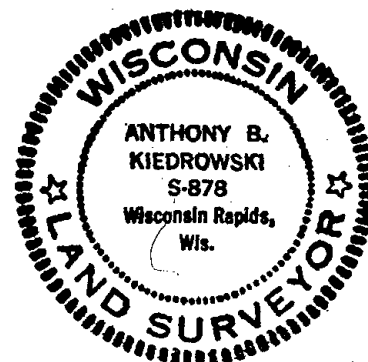
DRAWN BY: S.J.H.

CORNER NO. 124
SECTION 5
TOWN 17
RANGE 7



LOCATION
(Indicated by 'X')

SEAL:



DATA SHOWN HERE ON
CERTIFIED CORRECT:

Anthony B. Kiedrowski
Registered Land Surveyor

DATE: 4/5/83

BASIS FOR MONUMENT LOCATION

Show info such as: History of corner, with reference to Vol. and pg., dates, surveyor; exact description of monument replaced; if location computed, by taped or EDM traverse; landowner remarks, etc. (Use reverse side if necessary)

This corner was initially set in the center of the old roadbed. Sometime later we did an extensive traverse of Sec 32-18-7. We also found some old 1875 notes by Z. Wise. The corner as now set is at a point on line and half way between section corners. The distance from here to the NE corner of the section is within 0.3' of Wise' recorded distance.

Harrison set initially was removed and reset at this location by Roger Nuber and Scott Sorenson 4/18/80

01-09-02 2 NEW TIES 50°! JG-SS
2-17-97 ALL OK JG-SS

OK, 4-10-07-JG

TIE SKETCH

Show at least four ties, also fence lines, roads, topo, size and type of witness trees and if off road - best way to arrive at corner.

