

02 SECTION 18 TOWN 04 RANGE

ADAMS COUNTY

COUNTY CORNER NO: 19
 ROMPORTOL ID: 41804022000

PUBLIC LAND SURVEY MONUMENT RECORD

TYPE OF MONUMENT: HARRISON (BROKEN-TOP)
 ADAMS COUNTY COORDINATES, NAD 83 (2007)

N. 253184.532

E. 489414.036

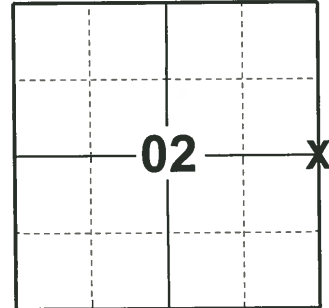
ELEVATION- - - - DATUM - - - -

FIELD WORK DATE: 01/11/2019

BASIS FOR MONUMENT LOCATION

1976 - PLS-878 EXCAVATED WITH BACKHOE. FOUND 10"X22"X22" SANDSTONE. LEFT IT AS FOUND AND SET 16" OF A HARRISON MONUMENT ON TOP. ALSO FOUND A 3/4"X10" REBAR AND 1"X24" YELLOW COATED GAS PIPE. ALL ARE OF UNKNOWN ORIGIN.

2019 - PLS-2675 FOUND HARRISON MONUMENT (BROKEN-TOP) 8" BELOW THE ROAD SURFACE AND 1 WITNESS. THE MONUMENT AGREES WITH THE WITNESS. ACCEPTED THE HARRISON MONUMENT (BROKEN-TOP) AS THE CORNER. SET 4 NEW TIES AND MEASURED TO THE EXISTING WITNESS.



LOCATION

(INDICATE CORNER BY "X")

SEAL:



DATA SHOWN HERE ON THIS TIE SHEET IS CORRECT AND COMPLETE TO THE BEST OF MY KNOWLEDGE AND BELIEF.

PROFESSIONAL LAND SURVEYOR

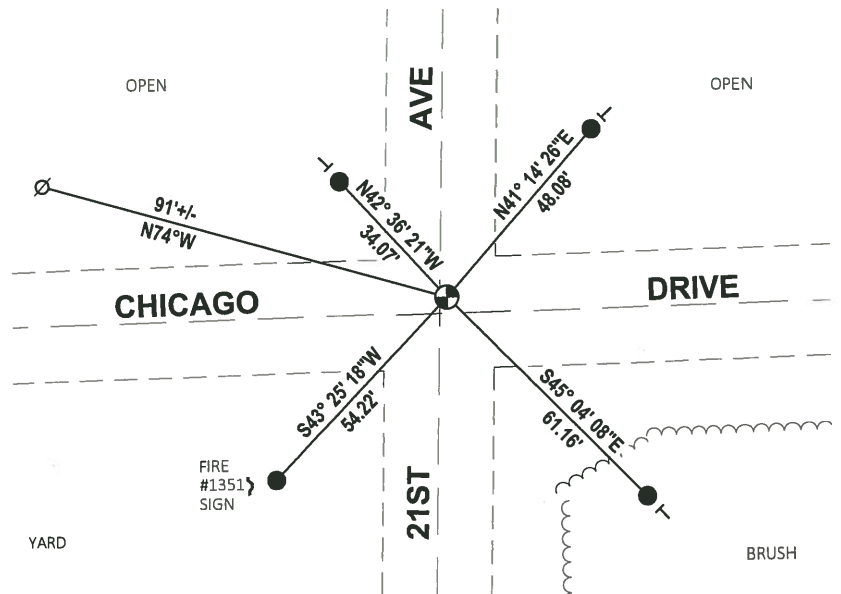
DATE 3/12/19

TIE SKETCH

NOTE: THE CORNER FALLS 3.5± NORTH OF CHICAGO DR. CENTERLINE



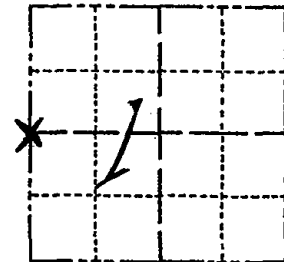
- SET 3/4" x 18" IRON REBAR, 1.50#/FT
- ⊕ FOUND HARRISON MONUMENT (BROKEN-TOP)
- ∅ WITNESS POWER POLE
- ↙ STEEL FIRE NUMBER POST
- ┌ VINYL "T" POST



Government Land Corner Certificate

Adams County
 TYPE OF MONUMENT: Harrison
 STATE PLANE COORDINATES: N _____
 E _____
 ELEVATION — M.S.L. DATUM: _____
 THETA ANGLE: _____
 FIELD BOOK: 74 (102) PAGE 148 (69)
 DRAWN BY: N.J.

CORNER NO. 19
 SECTION 1
 TOWN 18
 RANGE 4



LOCATION
(Indicated by 'X')

BASIS FOR MONUMENT LOCATION

Show info such as: History of corner, with reference to Vol. and pg., dates, surveyor; exact description of monument replaced; if location computed, by taped or EDM traverse; landowner remarks, etc. (Use reverse side if necessary)

Excavated with backhoe. Found 10 x 22 x 22" sandstone. Left it as found and set 16" of a Harrison monument on top. Also found a 3/4" x 18" rebar and a 1" x 24" yellow coated gas pipe. All are of unknown origin.

SEAL:



DATA SHOWN HERE ON
CERTIFIED CORRECT:

Anthony B. Kiedrowski
Registered Land Surveyor

DATE: 11/20/79

TIE SKETCH

Show at least four ties, also fence lines, roads, topo, size and type of witness trees and if off road - best way to arrive at corner.

