

03 SECTION 18 TOWN 04 RANGE

ADAMS COUNTY

COUNTY CORNER NO: 29
ROMPORTOL ID: 41804030000

PUBLIC LAND SURVEY MONUMENT RECORD

TYPE OF MONUMENT: HARRISON
ADAMS COUNTY COORDINATES, NAD 83 (2007)

N. 250488.967

E. 484114.943

ELEVATION- - - - - DATUM - - - - -

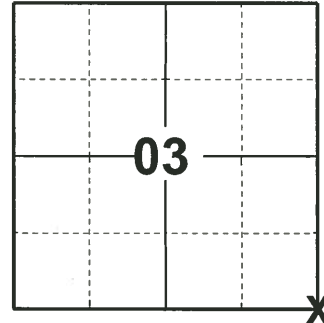
FIELD WORK DATE: 01/15/2019

BASIS FOR MONUMENT LOCATION

1981 - PLS-1167 TRAVERSED AREA TO LOCATE SEARCH AREA. COULD FIND NO SOLID EVIDENCE. SET CORNER ON A STRAIGHT LINE N 1/4 CORNER AND NORTHEAST CORNER. RAN ON SAID NORTH SECTION LINE UTILIZING THE POSSESSION LINES FROM THE SOUTH.

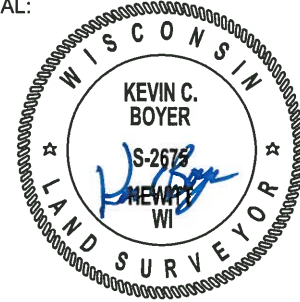
2013 - PLS-1478 REDREW TIE-SHEET

2019 - PLS-2675 FOUND HARRISON MONUMENT FLUSH WITH GROUND SURFACE AND 2 WITNESS TREES. THE MONUMENT AGREES WITH BOTH WITNESSES. ACCEPTED THE HARRISON MONUMENT AS THE CORNER. SET 4 NEW TIES AND MEASURED TO THE EXISTING WITNESSES.



LOCATION
(INDICATE CORNER BY "X")

SEAL:



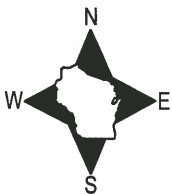
DATA SHOWN HERE ON THIS TIE SHEET IS CORRECT AND COMPLETE TO THE BEST OF MY KNOWLEDGE AND BELIEF.

PROFESSIONAL LAND SURVEYOR

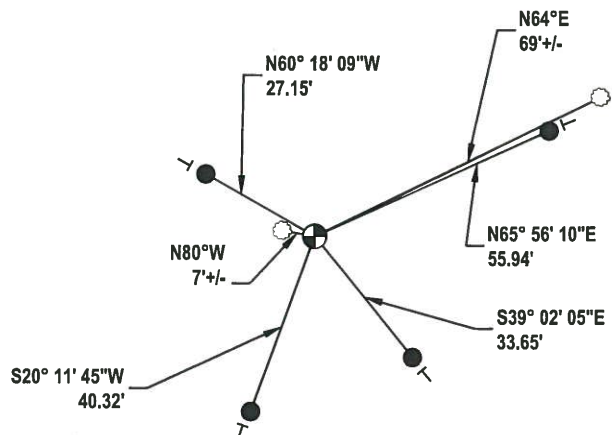
DATE 3/2/19

TIE SKETCH

NOTE: THE CORNER LANDS 60'± SOUTH OF POND EDGE AND 63'± NORTH OF TRAIL.



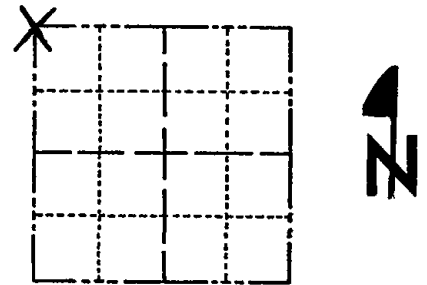
- SET 3/4" x 18" IRON REBAR, 1.50#/FT
- ⊕ FOUND HARRISON MONUMENT
- | VINYL "T" POST
- WITNESS TREE



Government Land Corner Certificate

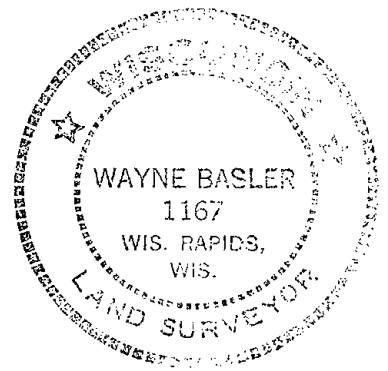
ADAMS County
 TYPE OF MONUMENT: Harrison
 STATE PLANE COORDINATES: N _____
 E _____
 ELEVATION — M.S.L. DATUM: _____
 THETA ANGLE: _____
 FIELD BOOK: _____ PAGE _____
 DRAWN BY: R. NUBER

CORNER NO. 29
 SECTION 11
 TOWN 18
 RANGE 4



LOCATION
(Indicated by 'X')

SEAL:



BASIS FOR MONUMENT LOCATION

Show info such as: History of corner, with reference to Vol. and pg., dates, surveyor; exact description of monument replaced; if location computed, by taped or EDM traverse; landowner remarks, etc. (Use reverse side if necessary)

Traversed area to locate search area. Could find no solid evidence. Set Corner on a straight line from N $\frac{1}{4}$ Cor. & NE Cor. I ran on said North Section line utilizing the possession lines from the South.

DATA SHOWN HERE ON
CERTIFIED CORRECT:

Wayne Basler
Registered Land Surveyor

DATE: Nov. 1981

TIE SKETCH

Show at least four ties, also fence lines, roads, topo, size and type of witness trees' and if off road - best way to arrive at corner.

1" SOLID ROD
6 1/2' TALL
IMMEDIATELY NE
OF MONUMENT

