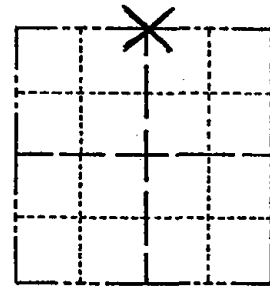


# Government Land Corner Certificate

ADAMS County  
 TYPE OF MONUMENT: Harrison  
 STATE PLANE COORDINATES: N \_\_\_\_\_  
 E \_\_\_\_\_  
 ELEVATION — M.S.L. DATUM: \_\_\_\_\_  
 THETA ANGLE: \_\_\_\_\_  
 FIELD BOOK: \_\_\_\_\_ PAGE \_\_\_\_\_  
 DRAWN BY: R. NUBER

CORNER NO. 30  
 SECTION 11  
 TOWN 18  
 RANGE 4



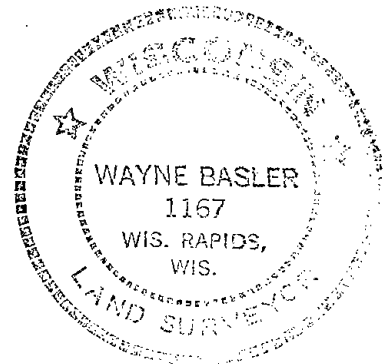
LOCATION  
(Indicated by 'X')

## BASIS FOR MONUMENT LOCATION

Show info such as: History of corner, with reference to Vol. and pg., dates, surveyor; exact description of monument replaced; if location computed, by taped or EDM traverse; landowner remarks, etc. (Use reverse side if necessary)

Traversed North line 711-18-4E, for search area. Located Original bearing tree as used by M.C. Smith in Oct. 1919. Set Monument from said bearing tree.

SEAL:



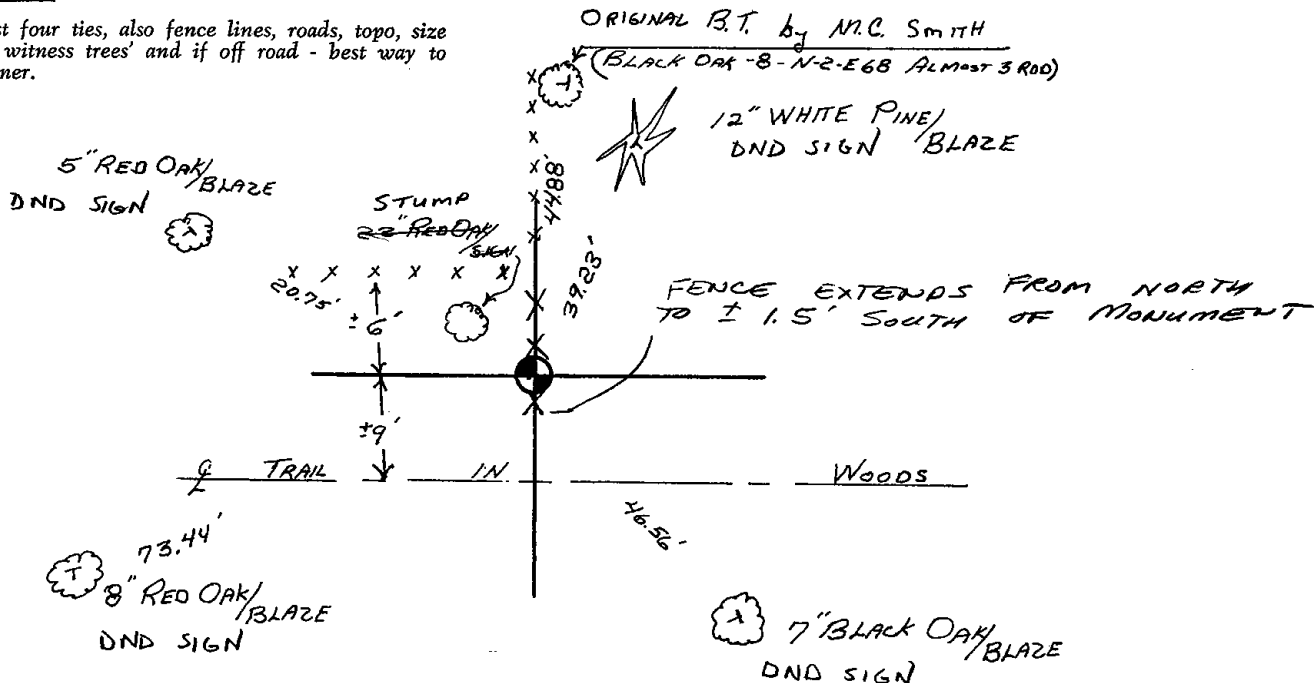
DATA SHOWN HERE ON  
CERTIFIED CORRECT:

Wayne Basler  
Registered Land Surveyor

DATE: Nov. 1981

## TIE SKETCH

Show at least four ties, also fence lines, roads, topo, size and type of 'witness trees' and if off road - best way to arrive at corner.



02 SECTION 18 TOWN 04 RANGE

# ADAMS COUNTY

COUNTY CORNER NO: 30  
ROMPORTOL ID: 41804020020

## PUBLIC LAND SURVEY MONUMENT RECORD

TYPE OF MONUMENT: HARRISON  
ADAMS COUNTY COORDINATES, NAD 83 (2007)

N. 250510.374

E. 486722.714

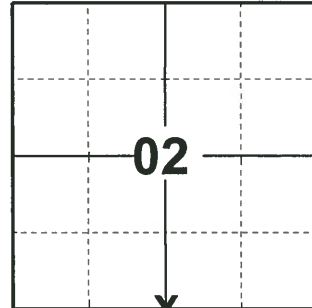
ELEVATION-      DATUM     

FIELD WORK DATE: 01/11/2019

### BASIS FOR MONUMENT LOCATION

1981 - PLS-1167 TRAVERSED NORTH LINE OF 11-18-4E, FOR SEARCH AREA. LOCATED ORIGINAL BEARING TREE AS USED BY M.C. SMITH IN OCT 1919. SET MONUMENT FROM SAID BEARING TREE.

2019 - PLS-2675 FOUND HARRISON MONUMENT FLUSH WITH THE GROUND SURFACE AND DID NOT RECOVER ANY TIES OR WITNESSES. ACCEPTED THE HARRISON MONUMENT AS THE CORNER AND SET 4 NEW TIES.



LOCATION

(INDICATE CORNER BY "X")

SEAL:



DATA SHOWN HERE ON THIS TIE SHEET IS CORRECT AND COMPLETE TO THE BEST OF MY KNOWLEDGE AND BELIEF.

PROFESSIONAL LAND SURVEYOR

DATE 3/12/19

### TIE SKETCH



- SET 3/4" x 18" IRON REBAR, 1.50#/FT
- ⊕ FOUND HARRISON MONUMENT
- VINYL "T" POST

