

02 SECTION 18 TOWN 04 RANGE

# ADAMS COUNTY

COUNTY CORNER NO: 31  
ROMPORTOL ID: 41804020000

## PUBLIC LAND SURVEY MONUMENT RECORD

TYPE OF MONUMENT: HARRISON  
ADAMS COUNTY COORDINATES, NAD 83 (2007)

N. 250532.874

E. 489369.339

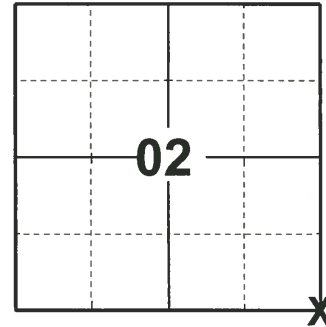
ELEVATION- - - - - DATUM - - - - -

FIELD WORK DATE: 01/11/2019

### BASIS FOR MONUMENT LOCATION

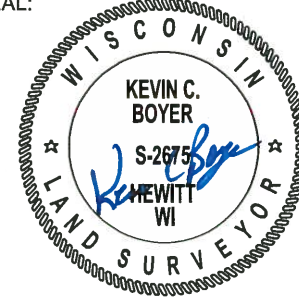
1979 - PLS-878 EXCAVATED WITH BACKHOE. FOUND PYRAMID SHAPED SANDSTONE, 16" LONG, 9" ON A SIDE. LOWERED STONE AND SET HARRISON MONUMENT ON TOP. EXCAVATION WITNESSED BY ADJACENT LANDOWNER STEPHEN MODRICH. ALSO FOUND A 1" IRON PIPE AND 3/4" IRON ROD. THESE ARE STILL IN PLACE. CAN FIND NO RECORD OF ANY OF THESE MONUMENTS.

2019 - PLS-2675 FOUND HARRISON MONUMENT 12" BELOW THE ROAD SURFACE AND 2 TIES AND 1 WITNESS. THE MONUMENT AGREES WITH THE WITNESS AND TIES. ACCEPTED THE HARRISON MONUMENT AS THE CORNER. SET 4 NEW TIES AND MEASURED TO THE EXISTING TIES AND WITNESS.



LOCATION  
(INDICATE CORNER BY "X")

SEAL:



DATA SHOWN HERE ON THIS TIE SHEET IS CORRECT AND COMPLETE TO THE BEST OF MY KNOWLEDGE AND BELIEF.

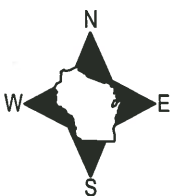
PROFESSIONAL LAND SURVEYOR

DATE 3/12/19

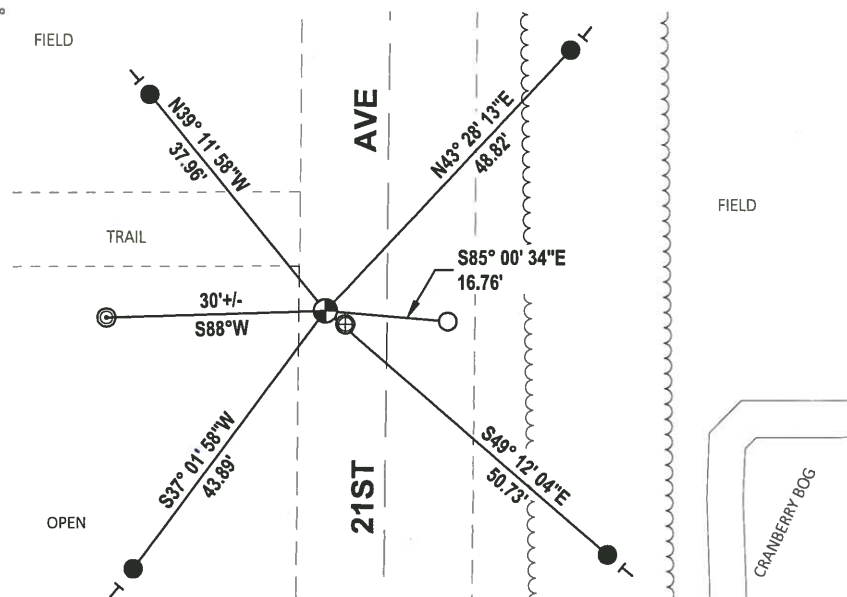
### - TIE SKETCH

NOTE: THE CORNER FALLS 8.3'± WEST OF 21ST AVE CENTERLINE.

NOTE: THE CORNER FALLS 3.26' NORTH 55° 35' 51" WEST OF A 1" O.D. IRON PIPE.



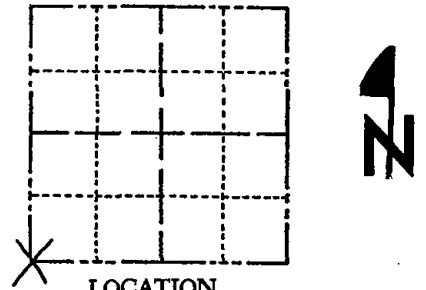
- SET 3/4" x 18" IRON REBAR, 1.50#/FT
- FOUND 3/4" IRON ROD
- ⊕ FOUND 1" O.D. IRON PIPE
- ⊕ FOUND HARRISON MONUMENT
- | VINYL "T" POST
- ◎ FENCE POST



# Government Land Corner Certificate

ADAMS County  
 TYPE OF MONUMENT: HARRISON MONUMENT  
 STATE PLANE COORDINATES: N \_\_\_\_\_  
 E \_\_\_\_\_  
 ELEVATION — M.S.L. DATUM: \_\_\_\_\_  
 THETA ANGLE: \_\_\_\_\_  
 FIELD BOOK: 102 PAGE 68  
 DRAWN BY: R. NUBER

CORNER NO. 1  
 SECTION 1  
 TOWN 18  
 RANGE 4



LOCATION  
 (Indicated by 'X')

## BASIS FOR MONUMENT LOCATION

Show info such as: History of corner, with reference to Vol. and pg., dates, surveyor; exact description of monument replaced; if location computed, by taped or EDM traverse; landowner remarks, etc. (Use reverse side if necessary)

Excavated with backhoe. Found pyramid shaped sandstone, 16" long, 9" on a side. Lowered stone and set Harrison monument on top. Excavation witnessed by adjacent landowner Stephen Modrich. Also found a 1" iron pipe and a 3/4" iron rod. These are still in place. Can find no record of any of these monuments.

SEAL:



DATA SHOWN HERE ON  
 CERTIFIED CORRECT:

*Anthony B. Kiedrowski*  
 Registered Land Surveyor

DATE: 11/20/79

## TIE SKETCH

Show at least four ties, also fence lines, roads, topo, size and type of witness trees and if off road - best way to arrive at corner.

