

01 SECTION 18 TOWN 04 RANGE

ADAMS COUNTY

COUNTY CORNER NO: 32
ROMPORTOL ID: 41804010020

PUBLIC LAND SURVEY MONUMENT RECORD

TYPE OF MONUMENT: HARRISON
ADAMS COUNTY COORDINATES, NAD 83 (2007)

N. 250579.360

E. 492010.760

ELEVATION- - - - DATUM - - - -

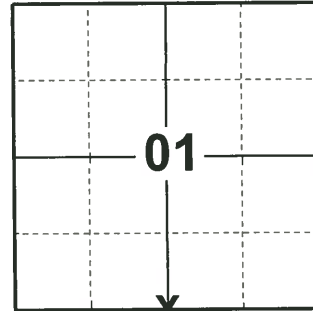
FIELD WORK DATE: 01/15/2019

BASIS FOR MONUMENT LOCATION

1976 - PLS-606 E.D.M. TRAVERSE. ACCEPTED OLD FENCE CORNER.

2013 - PLS-1478 RE-DREW TIE-SHEET

2019 - PLS-2675 FOUND HARRISON MONUMENT 3" ABOVE GROUND SURFACE AND 2 WITNESS. MONUMENT AGREES WITH BOTH WITNESSES. ACCEPTED THE HARRISON MONUMENT AS THE CORNER. SET 4 NEW TIES AND MEASURED TO EXISTING WITNESSES.



LOCATION

(INDICATE CORNER BY "X")

SEAL:

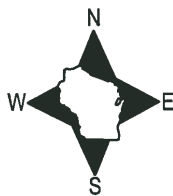


DATA SHOWN HERE ON THIS TIE SHEET IS CORRECT AND COMPLETE TO THE BEST OF MY KNOWLEDGE AND BELIEF.

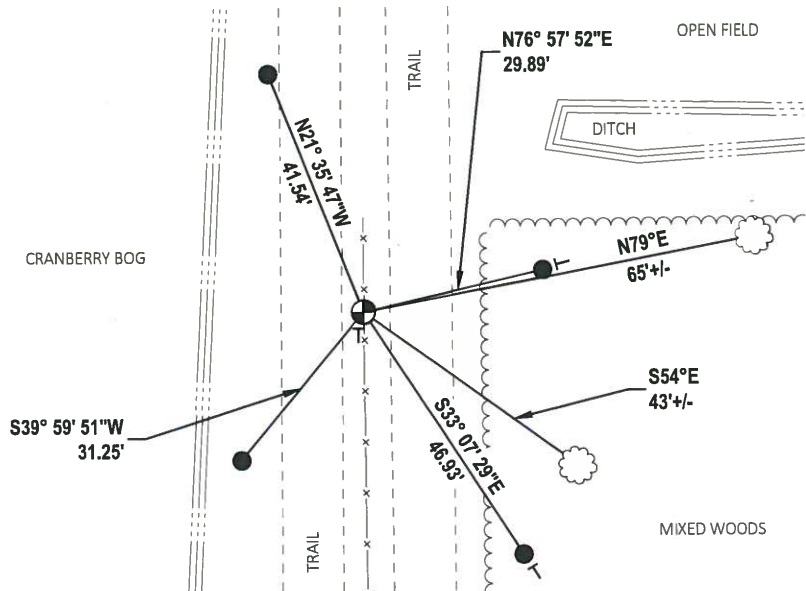
PROFESSIONAL LAND SURVEYOR

DATE 3/12/19

- TIE SKETCH



- SET 3/4" x 18" IRON REBAR, 1.50#/FT
- ⊕ FOUND HARRISON MONUMENT
- VINYL "T" POST
- ☉ WITNESS TREE



ADAMS COUNTY

Survey Monument Record

TYPE OF MONUMENT: HARRISON

STATE PLANE COORDINATES: N _____

E _____

ELEVATION — M.S.L. DATUM: _____

THETA ANGLE: _____

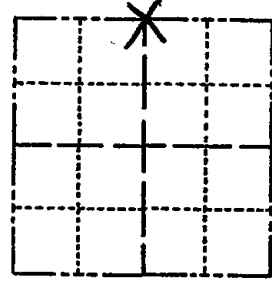
FIELD BOOK: _____ PAGE _____

CORNER NO. 914 ³²

SECTION 12

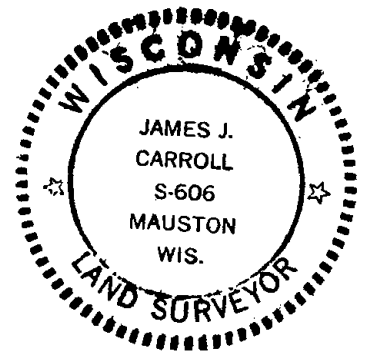
TOWN T18N

RANGE R4E



LOCATION
(Indicated by 'X')

SEAL:



BASIS FOR MONUMENT LOCATION

(Use reverse side if necessary)

Show info such as: History of corner, with reference to Vol. and pg, dates, surveyor; exact description of monument replaced; if location computed, by taped or EDM traverse; landowner remarks, etc.

E.D.M. traverse

Accepted old fence corner.

4-7-83 GR-SS G.K.

1-NEW TIE, 12/29/92 - JG-GR

2-~~CONE~~, 2-NEW, 2-18-98-JG
OK, 11-13-07-JG

CERTIFIED CORRECT:

James J. Carroll
Registered Land Surveyor
DATE: July 3, 1976

TIE SKETCH

(Show at least four ties)

