

12 SECTION 18 TOWN 04 RANGE

ADAMS COUNTY

COUNTY CORNER NO: 40
 ROMPORTOL ID: 41804122000

PUBLIC LAND SURVEY MONUMENT RECORD

TYPE OF MONUMENT: HARRISON
 ADAMS COUNTY COORDINATES, NAD 83 (2007)

N. 247966.612

E. 494686.248

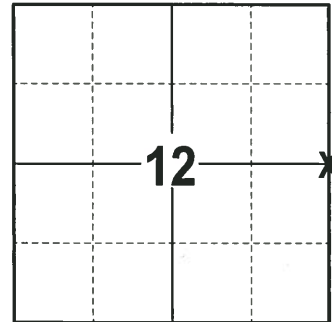
ELEVATION- --- DATUM ---

FIELD WORK DATE: 12/14/2017

BASIS FOR MONUMENT LOCATION

1976 - PLS 606 REPLACED A 1" PIPE WITH A HARRISON MONUMENT AT THE CORNER LOCATION AND TIED OUT. THE PIPE WAS USED AS THE CORNER FOR MANY SURVEYS IN THIS SECTION BY HARLEY SIME OF TOMAH, WISCONSIN.

2017 - PLS 2994 FOUND A HARRISON MONUMENT 2" BELOW THE ROAD SURFACE, 3 TIES AND 1 PROPERTY IRON. THE MONUMENT AGREES WITH THE EXISTING TIES. ACCEPTED THE HARRISON MONUMENT AS THE CORNER LOCATION. SET 2 NEW TIES AND MEASURED TO THE TIES AND PROPERTY IRON.



LOCATION
 (INDICATE CORNER BY "X")

SEAL:



DATA SHOWN HERE ON THIS TIE SHEET IS CORRECT AND COMPLETE TO THE BEST OF MY KNOWLEDGE AND BELIEF.

PROFESSIONAL LAND SURVEYOR

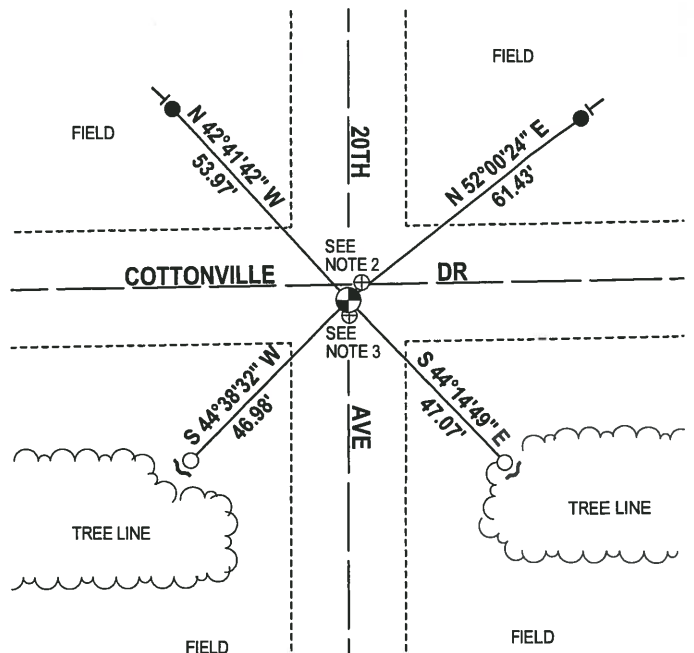
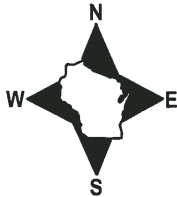
DATE 1-4-18

- TIE SKETCH -

NOTE 1: THE CORNER FALLS 3± SOUTH OF THE CENTERLINE OF COTTONVILLE DR.

NOTE 2: FOUND RR SPIKE N 37°10'32" E 4.61'.

NOTE 3: FOUND RR SPIKE S 03°50'54" E 3.23'.



- 3/4" x 18" IRON REBAR SET, 1.50#/FT
- 3/4" IRON ROD FOUND
- ⊕ RR SPIKE FOUND
- ⊙ HARRISON FOUND
- ↘ STEEL FENCE POST
- ↙ VINYL "T" POST

ADAMS COUNTY

Survey Monument Record.

TYPE OF MONUMENT: HARRISON

STATE PLANE COORDINATES: N _____

E _____

ELEVATION — M.S.L. DATUM: _____

THETA ANGLE: _____

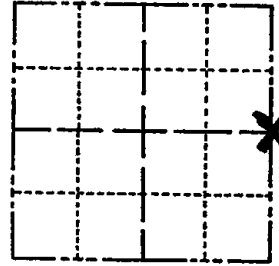
FIELD BOOK: _____ PAGE _____

CORNER NO. 976 ⁽⁴⁰⁾

SECTION 12

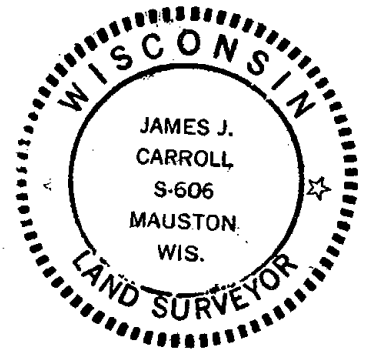
TOWN T18N

RANGE R4E



LOCATION
(Indicated by 'X')

SEAL:



BASIS FOR MONUMENT LOCATION

(Use reverse side if necessary)

Show info such as: History of corner, with reference to Vol. and pg, dates, surveyor; exact description of monument replaced; if location computed, by taped or EDM traverse; landowner remarks, etc.

E.D.M. + traverse

Replaced a 1" pipe at this location.
This pipe used as corner for many surveys
in this section by Harley Sime of Tomah, Wis.

O.K. 3-2-83 GR-SS

OK - 9-8-92 - JG

OK - 2-9-98 - JG

OK, 2-5-03 - JG

1-GONE, 11-13-07 - JG

CERTIFIED CORRECT:
James J. Carroll
Registered Land Surveyor
DATE: June 1, 1976

TIE SKETCH

(Show at least four ties)

