

11 SECTION 18 TOWN 04 RANGE

ADAMS COUNTY

COUNTY CORNER NO: 51
ROMPORTOL ID: 41804110000

PUBLIC LAND SURVEY MONUMENT RECORD

TYPE OF MONUMENT: HARRISON
ADAMS COUNTY COORDINATES, NAD 83 (2007)

N. 245271.584

E. 489405.944

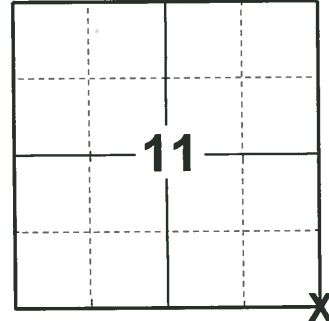
ELEVATION- - - - DATUM - - - -

FIELD WORK DATE: 01/16/2019

BASIS FOR MONUMENT LOCATION

1974 - PLS-1029 REPLACED A 3/4" IRON BAR WITH A HARRISON MONUMENT FLUSH WITH TOP OF GROUND.

2019 - PLS-2675 FOUND HARRISON MONUMENT 4" BELOW GROUND SURFACE AND 3 WITNESSES. ALL 3 WITNESSES AGREE WITH THE MONUMENT. ACCEPTED HARRISON MONUMENT AS THE CORNER. SET 4 NEW TIES AND MEASURED TO EXISTING WITNESSES.



LOCATION

(INDICATE CORNER BY "X")

SEAL:



DATA SHOWN HERE ON THIS TIE SHEET IS CORRECT AND COMPLETE TO THE BEST OF MY KNOWLEDGE AND BELIEF.

PROFESSIONAL LAND SURVEYOR

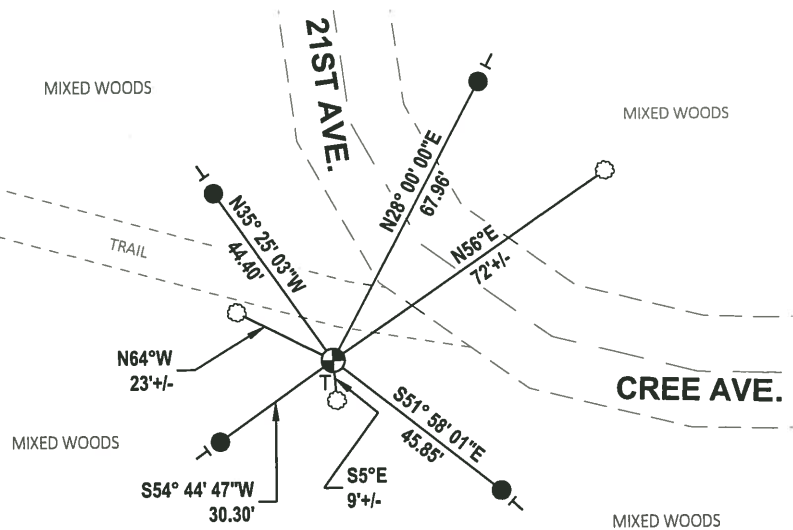
DATE 3/12/19

- TIE SKETCH

NOTE: THE CORNER LANDS 33± OFF CENTERLINE OF CREE AVE./21ST AVE.



- SET 3/4" x 18" IRON REBAR, 1.50#/FT
- ⊕ FOUND HARRISON MONUMENT
- ┆ VINYL "T" POST
- ⊗ WITNESS TREE



ADAMS COUNTY

Survey Monument Record

TYPE OF MONUMENT: HARRISON MON.

STATE PLANE COORDINATES: N _____

E _____

ELEVATION — M.S.L. DATUM: _____

THETA ANGLE: _____

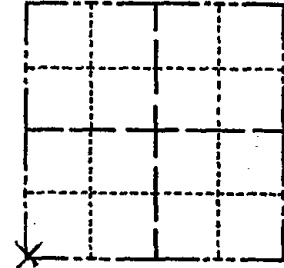
FIELD BOOK: _____ PAGE _____

CORNER NO. 540 ⁽⁵¹⁾

SECTION 12

TOWN 18

RANGE 4 E



LOCATION
(Indicated by 'X')

SEAL:

BASIS FOR MONUMENT LOCATION

(Use reverse side if necessary)

Show info such as: History of corner, with reference to Vol. and pg, dates, surveyor; exact description of monument replaced; if location computed, by taped or EDM traverse; landowner remarks, etc.

REPLACED A 3/4" IRON BAR WITH
A HARRISON MON. FLUSH WITH TOP
OF GROUND.

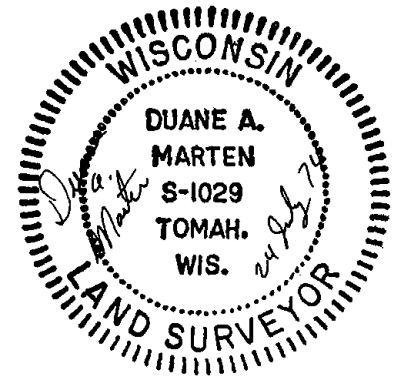
3-3-83 GR-55 - 1 TIE GONE - ADD 2

ALL OK - 12/29/92 JG-GR

" " 2/9/98 - JG

1-NEW, NEW SIGN, 5-22-63 - JG

OK 11-15-07 CS-55



CERTIFIED CORRECT:

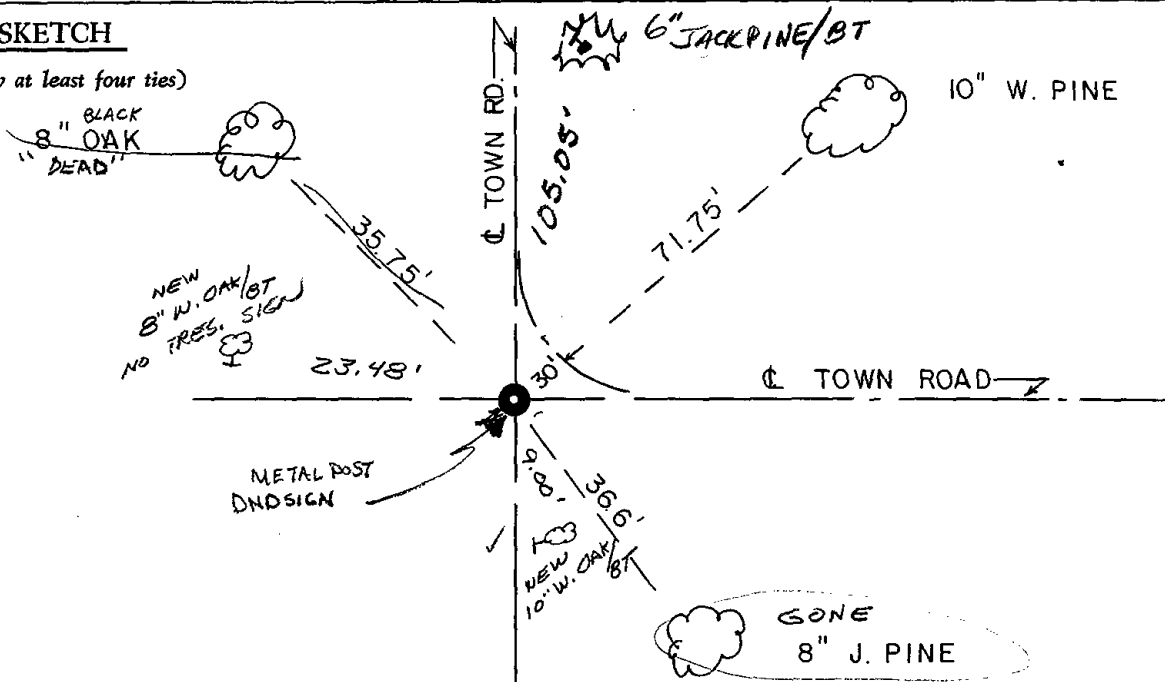
Duane A. Marten

Registered Land Surveyor

DATE: 24 July 1974

TIE SKETCH

(Show at least four ties)



ADAMS COUNTY

Survey Monument Record

TYPE OF MONUMENT: HARRISON MON.

STATE PLANE COORDINATES: N _____

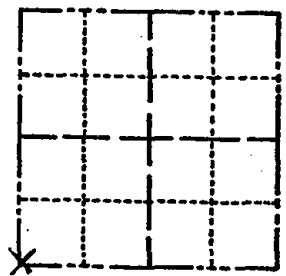
E _____

ELEVATION — M.S.L. DATUM: _____

THETA ANGLE: _____

FIELD BOOK: _____ PAGE _____

CORNER NO. 540 (51)
SECTION 12
TOWN 18
RANGE 4 E



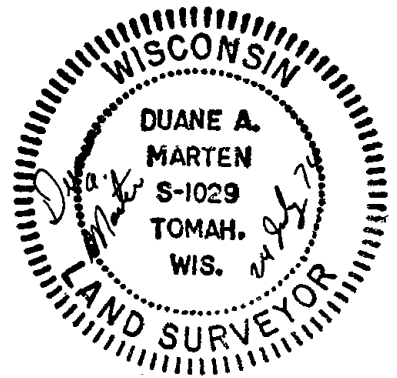
LOCATION
(Indicated by 'X')

BASIS FOR MONUMENT LOCATION

(Use reverse side if necessary)

Show info such as: History of corner, with reference to Vol. and pg. dates, surveyor; exact description of monument replaced; if location computed, by taped or EDM traverse; landowner remarks, etc.

SEAL:



REPLACED A 3/4" IRON BAR WITH
A HARRISON MON. FLUSH WITH TOP
OF GROUND.

3-3-83 GR-55 - 1 TIE GONE - ADD 2

CERTIFIED CORRECT:

Duane A. Marten

Registered Land Surveyor

DATE: 24 July 1974

Ties OK Nov 8 '83 Ken Carlson

TIE SKETCH

(Show at least four ties)

BLACK
8" OAK

NEW
8" W. OAK / BT

23.48'

35.75'

TOWN RD.

9.00'

NEW
10" W. OAK / BT

36.6'

71.75'

10" W. PINE

TOWN ROAD

GONE
8" J. PINE

