

15
SECTION

18
TOWN

04
RANGE

ADAMS COUNTY

COUNTY CORNER NO: 58

ROMPORTOL ID: 41804152000

PUBLIC LAND SURVEY MONUMENT RECORD

TYPE OF MONUMENT: HARRISON (BROKEN-TOP)
ADAMS COUNTY COORDINATES, NAD 83 (2007)

N. 242568.153

E. 484148.105

ELEVATION- - - DATUM - -

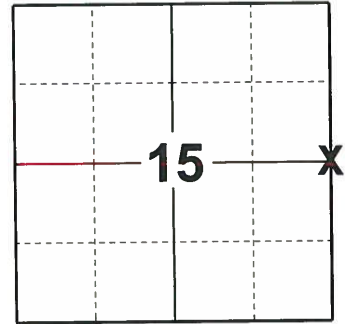
FIELD WORK DATE: 01/17/2019

BASIS FOR MONUMENT LOCATION

1981 - PLS-584 TRAVERSED AREA TO LOCATE SEARCH AREA. DUG WITH BACKHOE FOR CORNER EVIDENCE, COULD NOT LOCATE. AFTER ANALYZING TRAVERSE DATA THIS LOCATION WAS ACCEPTED. IN THIS AREA THERE IS NO POSSESSION LINES.

2013 - PLS-1478 REDREW TIE-SHEET

2019 - PLS-2675 FOUND HARRISON MONUMENT (BROKEN-TOP) 10" BELOW ROAD SURFACE AND 2 WITNESSES. THE MONUMENT AGREES WITH BOTH WITNESSES. ACCEPTED HARRISON MONUMENT (BROKEN-TOP) AS THE CORNER. SET 4 NEW TIES AND MEASURED TO THE EXISTING WITNESSES.



LOCATION

(INDICATE CORNER BY "X")

SEAL:



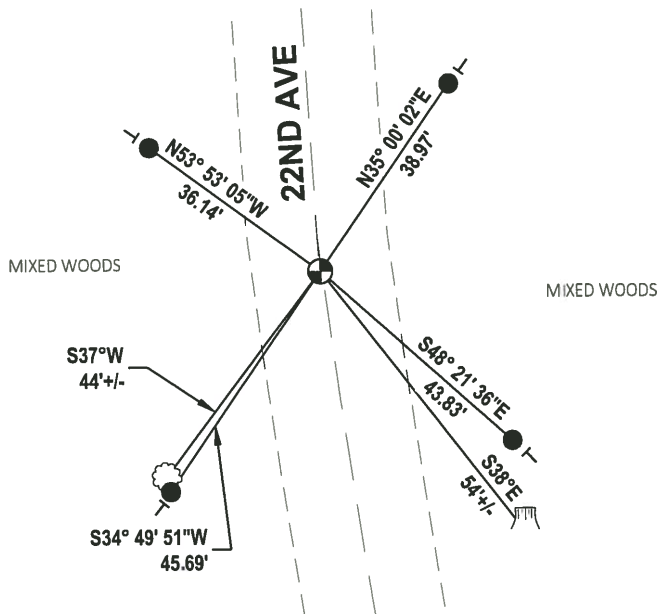
DATA SHOWN HERE ON THIS TIE SHEET IS CORRECT AND COMPLETE TO THE BEST OF MY KNOWLEDGE AND BELIEF.

PROFESSIONAL LAND SURVEYOR

DATE 3/12/19

- TIE SKETCH

NOTE: CORNER FALLS ON CENTERLINE OF 22ND AVE.

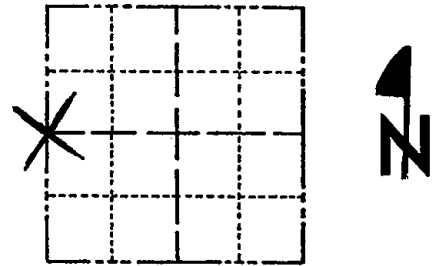


- SET 3/4" x 18" IRON REBAR, 1.50#/FT
- ⊕ FOUND HARRISON (BROKEN-TOP) MONUMENT
- ┆ VINYL "T" POST
- ☼ WITNESS TREE
- ▭ WITNESS STUMP

Government Land Corner Certificate

ADAMS County
 TYPE OF MONUMENT: Harrison
 STATE PLANE COORDINATES: N _____
 E _____
 ELEVATION — M.S.L. DATUM: _____
 THETA ANGLE: _____
 FIELD BOOK: _____ PAGE _____
 DRAWN BY: R. NUBER

CORNER NO. 58
 SECTION 14
 TOWN 18
 RANGE 4



LOCATION
 (Indicated by 'X')

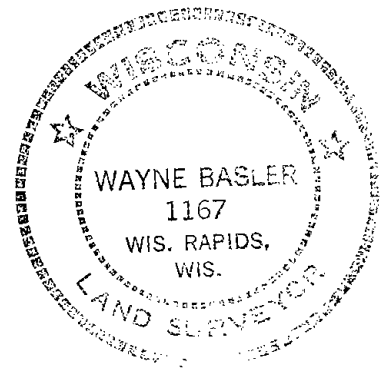
BASIS FOR MONUMENT LOCATION

Show info such as: History of corner, with reference to Vol. and pg., dates, surveyor; exact description of monument replaced; if location computed, by taped or EDM traverse; landowner remarks, etc. (Use reverse side if necessary)

~~Excavated with backhoe for any evidence of corner, could not locate. Set corner from Wise. Dept. Transportation plans for S.T.H. "21"~~

Traversed area to locate search area. Dug with backhoe for corner evidence, could not locate. After analyzing traverse data this location was accepted. In this area there is no possession lines.

SEAL:



DATA SHOWN HERE ON
 CERTIFIED CORRECT:

Wayne Basler
 Registered Land Surveyor

DATE: Nov. 1981

TIE SKETCH

Show at least four ties, also fence lines, roads, topo, size and type of witness trees and if off road - best way to arrive at corner.

