

14 SECTION 18 TOWN 04 RANGE

ADAMS COUNTY

COUNTY CORNER NO: 59
ROMPORTOL ID: 41804142000

PUBLIC LAND SURVEY MONUMENT RECORD

TYPE OF MONUMENT: 2-3/8" O.D. IRON PIPE W/ALUMINUM CAP
ADAMS COUNTY COORDINATES, NAD 83 (2007)

N. 242632.069

E. 489427.860

ELEVATION- - - - DATUM- - - -

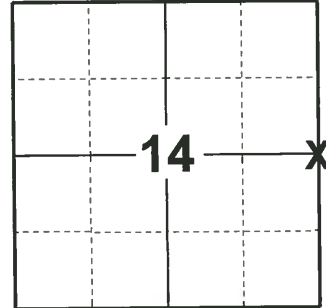
FIELD WORK DATE: 01/28/2019

BASIS FOR MONUMENT LOCATION

1980 - PLS-584 SET WEST QUARTER CORNER EQUAL DISTANCE AND ON LINE BETWEEN SECTION CORNERS AFTER A LONG SEARCH FOR EVIDENCE OF OLD CORNERS OR FENCE. NOTHING WAS FOUND AND NO SURVEY IN THIS AREA.

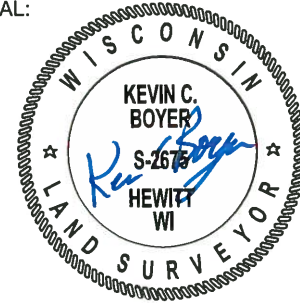
2013 - PLS-1478 REDREW TIE-SHEET

2019 - PLS-2675 FOUND 2-3/8" O.D. IRON PIPE W/ALUMINUM CAP 18" ABOVE THE WATER LINE AND DID NOT RECOVER ANY TIES OR WITNESSES. THE MONUMENT WAS VERIFIED TO BE ON A NEAR STRAIGHT LINE AND EQUIDISTANT BETWEEN THE NORTHEAST AND SOUTHEAST CORNERS OF SECTION 14. ACCEPTED THE 2-3/8" O.D. IRON PIPE W/ALUMINUM CAP AS THE CORNER.



LOCATION
(INDICATE CORNER BY "X")

SEAL:



DATA SHOWN HERE ON THIS TIE SHEET IS CORRECT AND COMPLETE TO THE BEST OF MY KNOWLEDGE AND BELIEF.

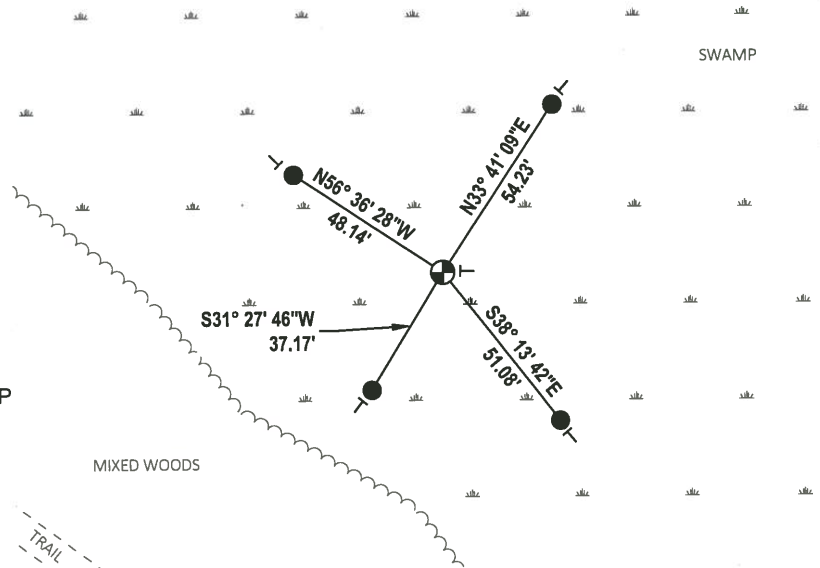
PROFESSIONAL LAND SURVEYOR

DATE 3/12/19

TIE SKETCH



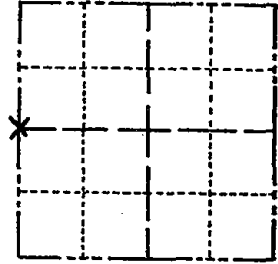
- SET 3/4" x 48" IRON REBAR, 1.50#/FT
- ⊕ FOUND 2-3/8" O.D IRON PIPE W/ALUMINUM CAP
- VINYL "T" POST



Government Land Corner Certificate

Adams County
 TYPE OF MONUMENT: 2" Iron Pipe with Aluminum Cap
 STATE PLANE COORDINATES: N _____
 E _____
 ELEVATION — M.S.L. DATUM: _____
 THETA ANGLE: _____
 FIELD BOOK: No PAGE No
 DRAWN BY: S. KMLEC

CORNER NO. 59
 SECTION 13
 TOWN 18
 RANGE 4



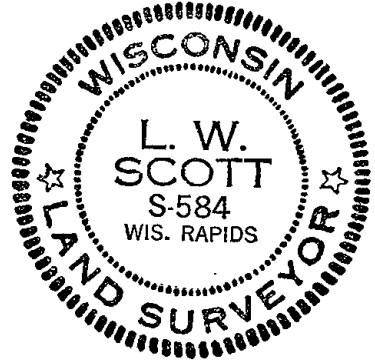
LOCATION
(Indicated by 'X')

BASIS FOR MONUMENT LOCATION

Show info such as: History of corner, with reference to Vol. and pg., dates, surveyor; exact description of monument replaced; if location computed, by taped or EDM traverse; landowner remarks, etc. (Use reverse side if necessary)

Set West Quarter Corner equal distance and on line between section corners after a long search for evidence of old corners or fence. Nothing was found and no survey in this area.

SEAL:



DATA SHOWN HERE ON CERTIFIED CORRECT:

L. W. Scott
 Registered Land Surveyor

DATE: 12/15/80

TIE SKETCH

Show at least four ties, also fence lines, roads, topo, size and type of witness trees and if off road - best way to arrive at corner.

