

14 SECTION 18 TOWN 04 RANGE

# ADAMS COUNTY

COUNTY CORNER NO: 70  
 ROMPORTOL ID: 41804140020

## PUBLIC LAND SURVEY MONUMENT RECORD

TYPE OF MONUMENT: HARRISON (BROKEN-TOP)  
 ADAMS COUNTY COORDINATES, NAD 83 (2007)

N. 239987.122

E. 486835.620

ELEVATION- - - - DATUM - - - -

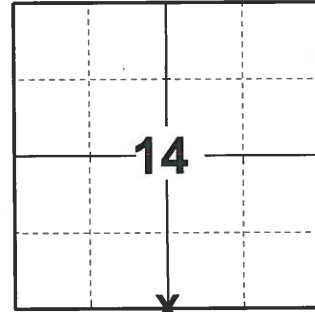
FIELD WORK DATE: 01/14/2019

### BASIS FOR MONUMENT LOCATION

1981 - PLS-1167 DUG FOR EVIDENCE OF ORIGINAL CORNER OR FOR EVIDENCE OF A REMONUMENTED CORNER, COULD NOT LOCATE EITHER. SET CORNER MIDWAY ON A STRAIGHT LINE, MIDWAY BETWEEN SECTION CORNERS. THIS LOCATION FITS THE POSSESSION LINES.

2013 - PLS-1478 REDREW THE TIE SHEET

2019 - PLS-2675 FOUND HARRISON (BROKEN-TOP) 12" BELOW THE ROAD SURFACE AND 3 WITNESS TREES. THE MONUMENT AGREES WITH ALL 3 WITNESS TREES. ACCEPTED THE HARRISON (BROKEN-TOP) AS THE CORNER LOCATION. SET 4 NEW TIES AND MEASURED TO THE TIES AND WITNESS TREES.



**LOCATION**  
 (INDICATE CORNER BY "X")

SEAL:



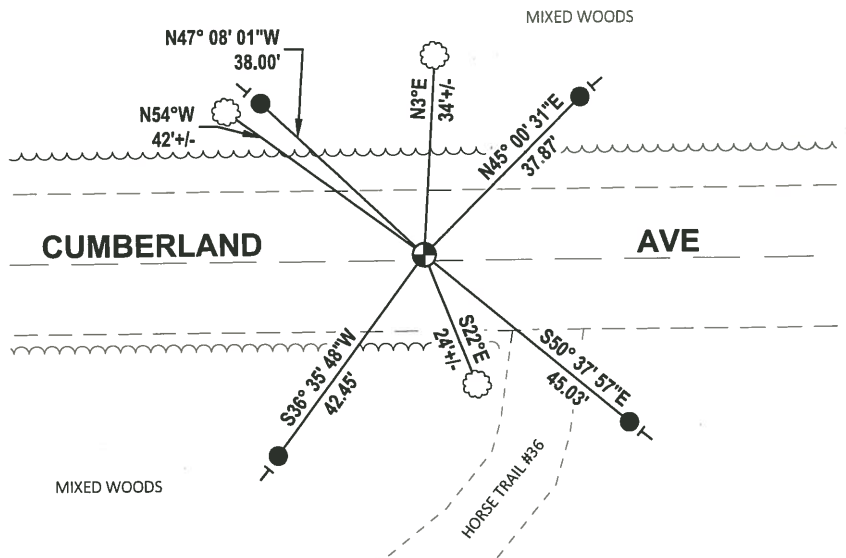
DATA SHOWN HERE ON THIS TIE SHEET IS CORRECT AND COMPLETE TO THE BEST OF MY KNOWLEDGE AND BELIEF.

PROFESSIONAL LAND SURVEYOR

DATE 3/12/19

### - TIE SKETCH

NOTE: THE CORNER FALLS 1.0± NORTH OF CUMBERLAND AVE CENTERLINE.

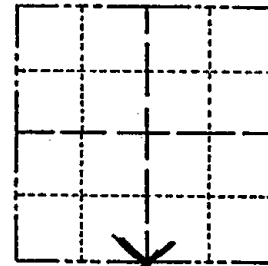


- SET 3/4" x 18" IRON REBAR, 1.50#/FT
- ⊕ FOUND HARRISON MONUMENT (BROKEN-TOP)
- VINYL "T" POST
- ⊗ WITNESS TREE

# Government Land Corner Certificate

Adams County  
 TYPE OF MONUMENT: Harrison  
 STATE PLANE COORDINATES: N \_\_\_\_\_  
 E \_\_\_\_\_  
 ELEVATION — M.S.L. DATUM: \_\_\_\_\_  
 THETA ANGLE: \_\_\_\_\_  
 FIELD BOOK: \_\_\_\_\_ PAGE \_\_\_\_\_  
 DRAWN BY: R. NUBER

CORNER NO. 70  
 SECTION 14  
 TOWN 18  
 RANGE 4



LOCATION  
 (Indicated by 'X')

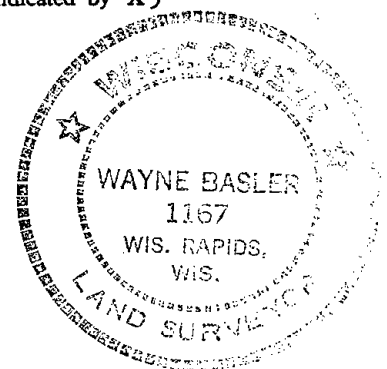
## BASIS FOR MONUMENT LOCATION

Show info such as: History of corner, with reference to Vol. and pg., dates, surveyor; exact description of monument replaced; if location computed, by taped or EDM traverse; landowner remarks, etc. (Use reverse side if necessary)

Dug for evidence of original corner or for evidence of a remonumented corner, could not locate either.  
 Set corner midway\* on a straight line, midway between section corners. This location fits the possession lines.

\* Not

SEAL:



DATA SHOWN HERE ON  
 CERTIFIED CORRECT:

Wayne Basler  
 Registered Land Surveyor

DATE: Nov. 1981

## TIE SKETCH

Show at least four ties, also fence lines, roads, topo, size and type of witness trees' and if off road - best way to arrive at corner.

