

13 SECTION 18 TOWN 04 RANGE

ADAMS COUNTY

COUNTY CORNER NO: 72
 ROMPORTOL ID: 41804130020

PUBLIC LAND SURVEY MONUMENT RECORD

TYPE OF MONUMENT: HARRISON
 ADAMS COUNTY COORDINATES, NAD 83 (2007)

N. 240003.211

E. 492062.368

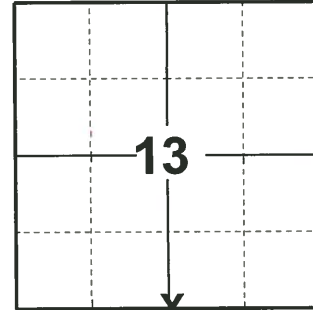
ELEVATION- DATUM

FIELD WORK DATE: 01/14/2019

BASIS FOR MONUMENT LOCATION

1979 - PLS-878 EXCAVATED WITH BACKHOE. FOUND 5"X5"X17" SQUARE CONCRETE/STONE MONUMENT. LOWERED MONUMENT FOUND AND SET A HARRISON MONUMENT ON TOP. NO RECORD OF MONUMENT FOUND, BUT IT DOES MATCH OLD POSSESSION LINES AND IS VERY NEARLY HALF WAY BETWEEN SECTION CORNERS.

2019 - PLS-2675 FOUND HARRISON MONUMENT 12" BELOW THE ROAD SURFACE AND 1 TIE. THE MONUMENT AGREES WITH THE FOUND TIE. ACCEPTED THE HARRISON MONUMENT AS THE CORNER. SET 1 NEW TIE. MEASURED TO 2 FOUND PROPERTY IRONS AND THE EXISTING TIE.



LOCATION
 (INDICATE CORNER BY "X")

SEAL:



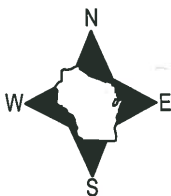
DATA SHOWN HERE ON THIS TIE SHEET IS CORRECT AND COMPLETE TO THE BEST OF MY KNOWLEDGE AND BELIEF.

PROFESSIONAL LAND SURVEYOR

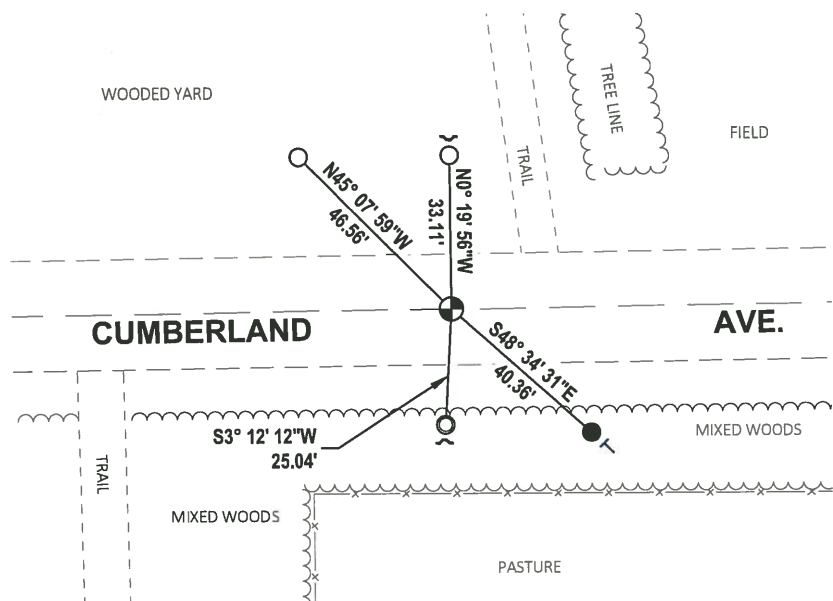
DATE 3/12/19

- TIE SKETCH

NOTE: THE CORNER LANDS ON CENTERLINE OF CUMBERLAND AVE.



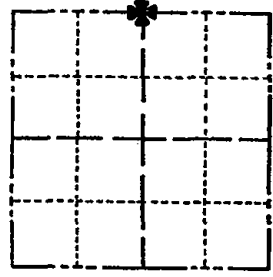
- SET 3/4" x 18" IRON REBAR, 1.50#/FT
- FOUND 3/4" IRON ROD
- FOUND 1-1/4" O.D. IRON PIPE
- ⊕ FOUND HARRISON MONUMENT
- ✓ STEEL FENCE POST
- VINYL "T" POST



Government Land Corner Certificate

ADAMS County
 TYPE OF MONUMENT: HARRISON
 STATE PLANE COORDINATES: N _____
 E _____
 ELEVATION — M.S.L. DATUM: _____
 THETA ANGLE: _____
 FIELD BOOK: 77 PAGE 133
 DRAWN BY: KENT B. HEPPE

CORNER NO. 72
 SECTION 24
 TOWN 18
 RANGE 4



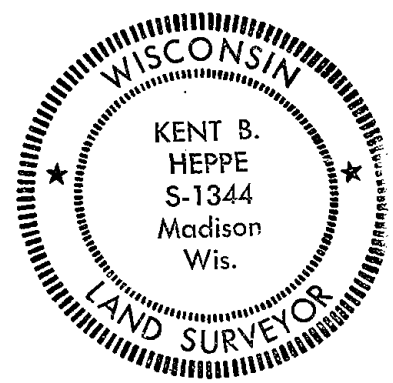
LOCATION
 (Indicated by 'X')

BASIS FOR MONUMENT LOCATION

Show info such as: History of corner, with reference to Vol. and pg., dates, surveyor; exact description of monument replaced; if location computed, by taped or EDM traverse; landowner remarks, etc. (Use reverse side if necessary)

County Surveyor excavated with backhoe. Found a 5"x5"x17" Concrete Stone. Lowered stone and set Harrison on top.

SEAL:



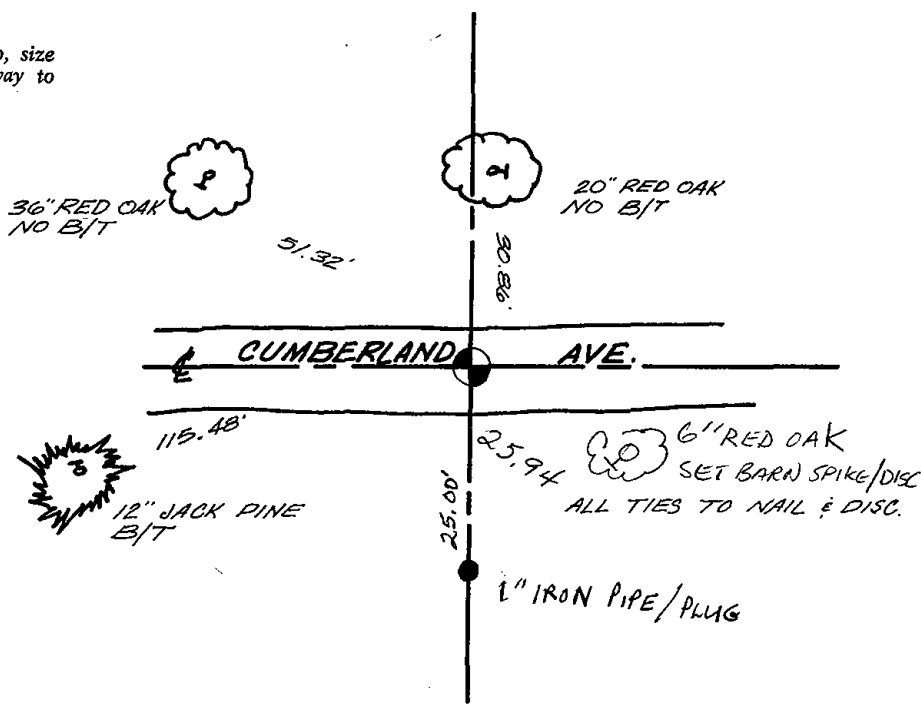
DATA SHOWN HERE ON
 CERTIFIED CORRECT.

Kent B. Heppe
 Registered Land Surveyor

DATE: Dec 24, 1979

TIE SKETCH

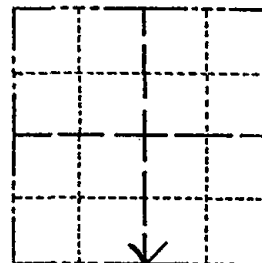
Show at least four ties, also fence lines, roads, topo, size and type of witness trees' and if off road - best way to arrive at corner.



Government Land Corner Certificate

ADAMS County
 TYPE OF MONUMENT: HARRISON MONUMENT
 STATE PLANE COORDINATES: N _____
 E _____
 ELEVATION — M.S.L. DATUM: _____
 THETA ANGLE: _____
 FIELD BOOK: 102 PAGE 67
 DRAWN BY: R. NUBER

CORNER NO. 72
 SECTION 13
 TOWN 18
 RANGE 4



LOCATION
 (Indicated by 'X')

BASIS FOR MONUMENT LOCATION

Show info such as: History of corner, with reference to Vol. and pg., dates, surveyor; exact description of monument replaced; if location computed, by taped or EDM traverse; landowner remarks, etc. (Use reverse side if necessary)

Excavated with backhoe. Found 5 x 5 x 17" square concrete/stone monument. Lowered monument found and set a Harrison monument on top. No record of monument found, but it does match old possession lines and is very nearly half way between section corners.

SEAL:



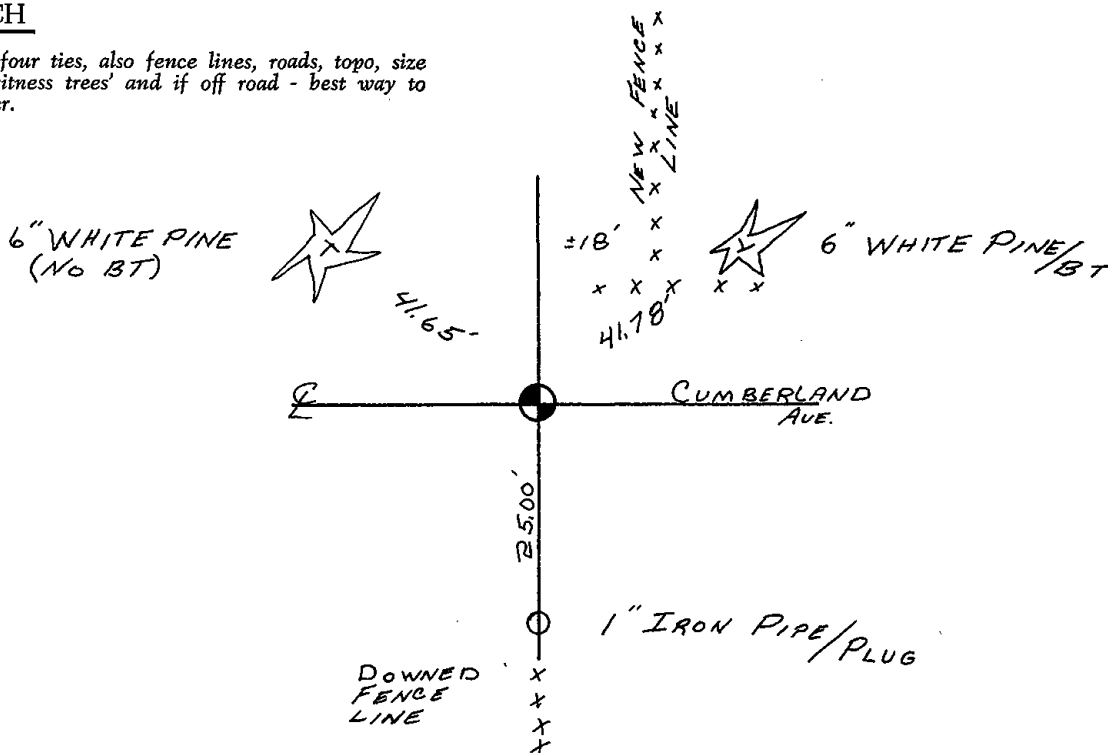
DATA SHOWN HERE ON
 CERTIFIED CORRECT:

Anthony B. Kiedrowski
 Registered Land Surveyor

DATE: 11/20/79

TIE SKETCH

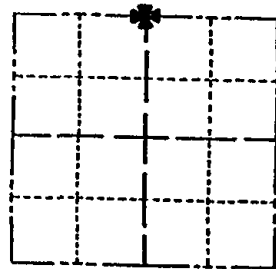
Show at least four ties, also fence lines, roads, topo, size and type of witness trees' and if off road - best way to arrive at corner.



Government Land Corner Certificate

ADAMS County
 TYPE OF MONUMENT: HARRISON
 STATE PLANE COORDINATES: N _____
 E _____
 ELEVATION — M.S.L. DATUM: _____
 THETA ANGLE: _____
 FIELD BOOK: 77 PAGE 133
 DRAWN BY: KENT B. HEPPE

CORNER NO. 72
 SECTION 24
 TOWN 18
 RANGE 4



LOCATION
 (Indicated by 'X')

BASIS FOR MONUMENT LOCATION

Show info such as: History of corner, with reference to Vol. and pg., dates, surveyor; exact description of monument replaced; if location computed, by taped or EDM traverse; landowner remarks, etc. (Use reverse side if necessary)

County Surveyor excavated with backhoe. Found a 5"x5"x17" Concrete Stone. Lowered stone and set Harrison on top.

SEAL:



DATA SHOWN HERE ON
 CERTIFIED CORRECT.

Kent B. Heppe
 Registered Land Surveyor

DATE: Dec 24, 1979

9 MAY 97 NEW TIE *[Signature]*

TIE SKETCH

Show at least four ties, also fence lines, roads, topo, size and type of witness trees' and if off road - best way to arrive at corner.

