

23 SECTION 18 TOWN 04 RANGE

# ADAMS COUNTY

COUNTY CORNER NO: 79  
ROMPORTOL ID: 41804232000

## PUBLIC LAND SURVEY MONUMENT RECORD

TYPE OF MONUMENT: HARRISON  
ADAMS COUNTY COORDINATES, NAD 83 (2007)

N. 237348.571

E. 489399.451

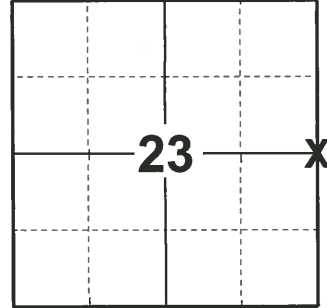
ELEVATION- - - - DATUM - - - -

FIELD WORK DATE: 01/14/2019

### BASIS FOR MONUMENT LOCATION

1979 - PLS-1344 FOUND 1-1/2"x12" IRON PIPE SET INSIDE A 8"x2" CIRCULAR PIECE OF SANDSTONE MARKED "23" AND "24". RAN TRAVERSE OF THE NORTH AND WEST LINES OF THIS SECTION AND COMPARED DISTANCES WITH THOSE CALLED FOR BY M.C. SMITH VOL. 1, PG 140 OF THE ADAMS COUNTY SURVEYOR RECORDS. ACCEPTED MONUMENT AS CORRECT.

2019 - PLS-2675 FOUND HARRISON MONUMENT 12" BELOW THE ROAD SURFACE AND DID NOT RECOVER ANY TIES OR WITNESSES. ACCEPTED THE HARRISON MONUMENT AS THE CORNER AND SET 4 NEW TIES.



LOCATION  
(INDICATE CORNER BY "X")

SEAL:



DATA SHOWN HERE ON THIS TIE SHEET IS CORRECT AND COMPLETE TO THE BEST OF MY KNOWLEDGE AND BELIEF.

PROFESSIONAL LAND SURVEYOR

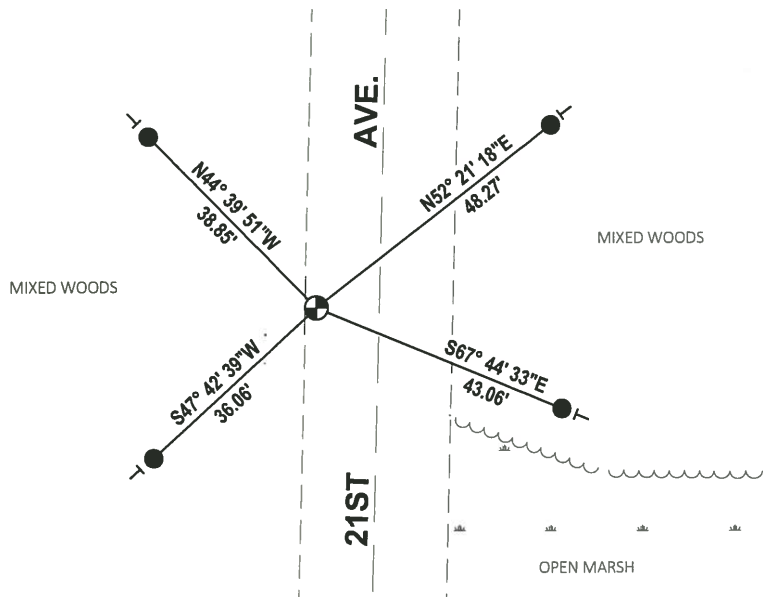
DATE 3/12/19

### TIE SKETCH

NOTE: THE CORNER LANDS 10'± WEST OF THE CENTERLINE OF 21ST AVE.



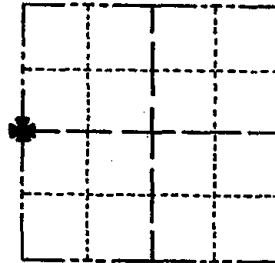
- SET 3/4" x 18" IRON REBAR, 1.50#/FT
- ⊕ FOUND HARRISON MONUMENT
- VINYL "T" POST



# Government Land Corner Certificate

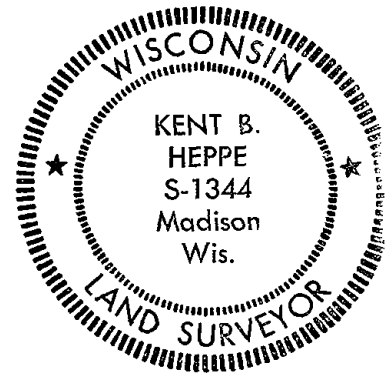
ADAMS County  
 TYPE OF MONUMENT: 1 1/2" x 12" I.P. HARRISON  
 STATE PLANE COORDINATES: N \_\_\_\_\_  
 E \_\_\_\_\_  
 ELEVATION — M.S.L. DATUM: \_\_\_\_\_  
 THETA ANGLE: \_\_\_\_\_  
 FIELD BOOK: 77 PAGE 135  
 DRAWN BY: KENT B. HEPPE

CORNER NO. 79  
 SECTION 24  
 TOWN 18  
 RANGE 4



LOCATION  
(Indicated by 'X')

SEAL:



## BASIS FOR MONUMENT LOCATION

Show info such as: History of corner, with reference to Vol. and pg., dates, surveyor; exact description of monument replaced; if location computed, by taped or EDM traverse; landowner remarks, etc. (Use reverse side if necessary)

Found 1 1/2"x12" iron pipe set inside a 8"x2" circular piece of sandstone marked "23" and "24". Ran traverse of the North and West lines of this section and compared distances with those called for by M.C. Smith Vol. 1, Pg. 140 of the Adams County Surveyor Records. Accepted monument as correct.

*08-28-08 RESET HARRISON BASED ON TRAVERSE USING K.E.I. SECTION SUMMARY DATED 12-21-79*

DATA SHOWN HERE ON CERTIFIED CORRECT.

*Kent B. Heppe*  
 Registered Land Surveyor

DATE: *Dec. 24, 1979*

## TIE SKETCH

Show at least four ties, also fence lines, roads, topo, size and type of witness trees and if off road - best way to arrive at corner.

