

24 SECTION    18 TOWN    04 RANGE

# ADAMS COUNTY

COUNTY CORNER NO: 92  
 ROMPORTOL ID: 41804240020

## PUBLIC LAND SURVEY MONUMENT RECORD

TYPE OF MONUMENT: CALCULATED POSITION  
 ADAMS COUNTY COORDINATES, NAD 83 (2007)

N. 234729.223  
 E. 492042.617

ELEVATION- \_\_\_\_\_ DATUM \_\_\_\_\_

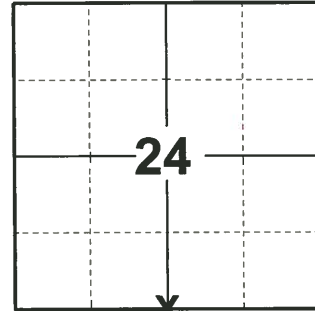
FIELD WORK DATE: 01/17/2019

### BASIS FOR MONUMENT LOCATION

1982 - PLS-1167 SET CORNER ACCORDING TO SECTION SUMMARY ON FILE PREPARED BY A.B. KIEDROWSKI. THIS LOCATION FITS M.C. SMITH'S NOTES ON VOL. 2, PAGE 13.

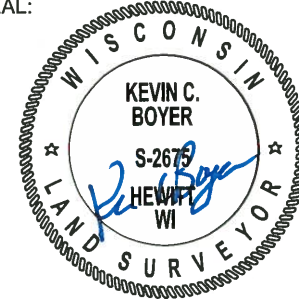
NOTE: WITNESS CORNER SET 125.00' WEST OF S $\frac{1}{2}$  CORNER. LOCATION ON THE SOUTH SECTION LINE WHICH IS STRAIGHT BETWEEN SOUTHWEST CORNER AND SOUTHEAST CORNER.

2019 - PLS-2675 FOUND 2-3/8" O.D. WITNESS IRON PIPE 2" ABOVE THE GROUND SURFACE AND 4 WITNESS TREES. THE WITNESS PIPE AGREES WITH ALL WITNESS TREES. VERIFIED TO BE NEAR ON A STRAIGHT LINE BETWEEN THE SOUTHWEST AND SOUTHEAST CORNERS OF SECTION 24. CORNER POSITION WAS CALCULATED BY HOLDING A STRAIGHT LINE BETWEEN THE WITNESS PIPE AND THE SOUTHEAST CORNER OF SAID SECTION 125.00'. SET 4 NEW TIES AND MEASURED TO THE EXISTING WITNESS TREES TO THE WITNESS MONUMENT.



**LOCATION**  
 (INDICATE CORNER BY "X")

SEAL:

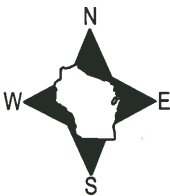


DATA SHOWN HERE ON THIS TIE SHEET IS CORRECT AND COMPLETE TO THE BEST OF MY KNOWLEDGE AND BELIEF.

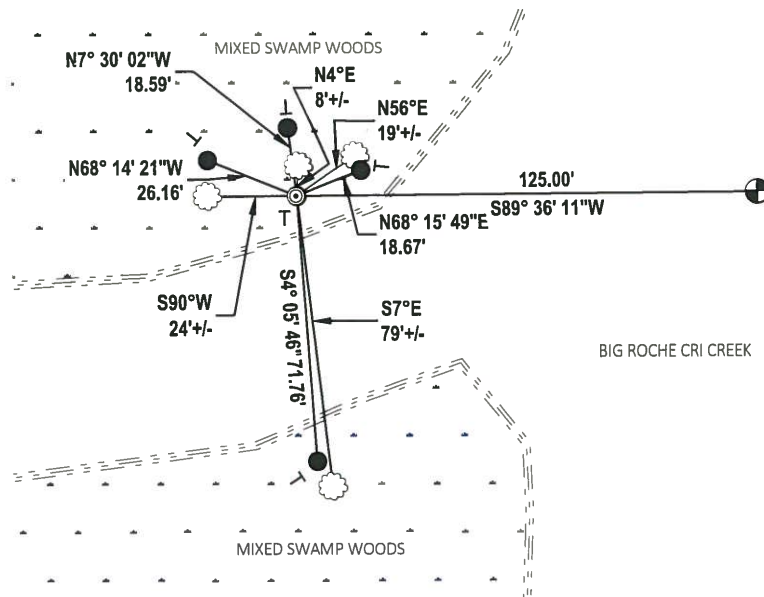
PROFESSIONAL LAND SURVEYOR

DATE 3/12/19

### TIE SKETCH



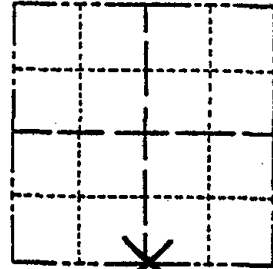
- SET 3/4" x 48" IRON REBAR, 1.50#/FT
- ⊙ FOUND 2-3/8" O.D. IRON PIPE
- ⊕ CALCULATED POSITION
- └ VINYL "T" POST
- ☁ WITNESS TREE



# Government Land Corner Certificate

ADAMS County  
 TYPE OF MONUMENT: 2" x 30" WITNESS PIPE  
 STATE PLANE COORDINATES: N \_\_\_\_\_  
 E \_\_\_\_\_  
 ELEVATION — M.S.L. DATUM: \_\_\_\_\_  
 THETA ANGLE: \_\_\_\_\_  
 FIELD BOOK: \_\_\_\_\_ PAGE \_\_\_\_\_  
 DRAWN BY: R. NUBER

CORNER NO. 92  
 SECTION 24  
 TOWN 18  
 RANGE 4

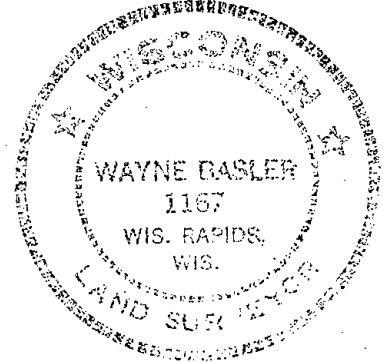


LOCATION  
(Indicated by 'X')

## BASIS FOR MONUMENT LOCATION

Show info such as: History of corner, with reference to Vol. and pg., dates, surveyor; exact description of monument replaced; if location computed, by taped or EDM traverse; landowner remarks, etc. (Use reverse side if necessary)

SEAL:



Set corner according to section summary on file prepared by A.B. Kiedrowski. This location fits M.C. Smith's notes on Vol. 2 Page 13

NOTE: Witness corner set 125.00' West of SW Cor. location on the South section line which is straight between SW Cor. & SE Cor.

DATA SHOWN HERE ON CERTIFIED CORRECT:

1-GONE, 1-NEW NOTE MAIN CHANNEL OF CREEK IS NOW 200'± NORTH OF CORNER  
 2-16-98 - GR

Wayne Basler  
 Registered Land Surveyor

DATE: 1-3-82

## TIE SKETCH

Show at least four ties, also fence lines, roads, topo, size and type of witness trees' and if off road - best way to arrive at corner.

