

PUBLIC LAND SURVEY MONUMENT RECORD

TYPE OF MONUMENT: HARRISON (BROKEN-TOP)
 ADAMS COUNTY COORDINATES, NAD 83 (2007)

N. 255798.096

E. 494736.947

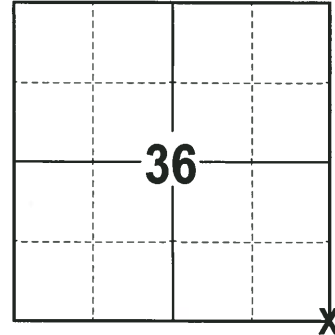
ELEVATION- _____ DATUM _____

FIELD WORK DATE: 12/14/2017

BASIS FOR MONUMENT LOCATION

1981 - PLS 878 EXCAVATED A LARGE AREA WITH BACKHOE AND FOUND NOTHING. NO RECORD OF ANY RESURVEYS. NORTH-SOUTH POSITION OF THE CORNER WAS ESTABLISHED BY ANALYZING A TRAVERSE OF THE SECTION, COMPARING ORIGINAL DISTANCES AND POSSESSION LINES. THE EAST-WEST POSITION SIMILARLY DETERMINED. SET A HARRISON MONUMENT AND TIED OUT.

2017 - PLS 2994 FOUND A HARRISON MONUMENT WITH A BROKEN-TOP 12" BELOW THE ROAD SURFACE. FOUND NO EVIDENCE OF ANY WITNESSES OR TIES. ACCEPTED THE HARRISON MONUMENT WITH A BROKEN-TOP AS THE BEST EVIDENCE OF THE CORNER LOCATION. SET 4 NEW TIES AND MEASURED TO THE TIES.



LOCATION
(INDICATE CORNER BY "X")

SEAL:



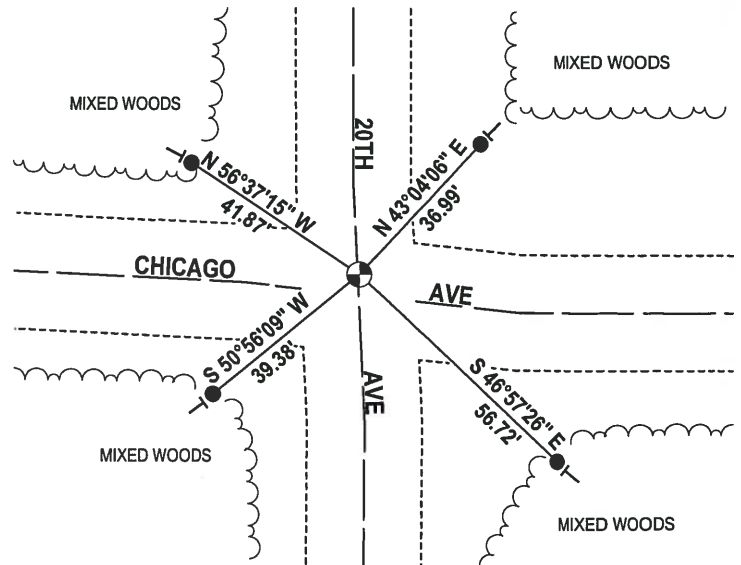
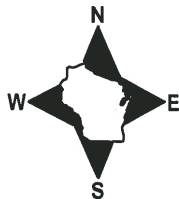
DATA SHOWN HERE ON THIS TIE SHEET IS CORRECT AND COMPLETE TO THE BEST OF MY KNOWLEDGE AND BELIEF.

PROFESSIONAL LAND SURVEYOR

DATE 1-4-18

- TIE SKETCH

NOTE: THE CORNER FALLS 4± NORTH OF THE CENTERLINE OF CHICAGO AVE AND 0.5± EAST OF THE CENTERLINE OF 20TH AVE.

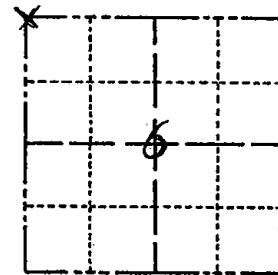


- 3/4" x 18" IRON REBAR SET, 1.50#/FT
- ⊙ HARRISON (BROKEN-TOP) FOUND
- VINYL "T" POST

Government Land Corner Certificate

ADAMS County
 TYPE OF MONUMENT: Harrison Monument
 STATE PLANE COORDINATES: N _____
 E _____
 ELEVATION — M.S.L. DATUM: _____
 THETA ANGLE: _____
 FIELD BOOK: 77 PAGE 131
 DRAWN BY: Lloyd W. Scott

CORNER NO. 1
 SECTION 6
 TOWN 18
 RANGE 5



LOCATION
(Indicated by 'X')

SEAL:



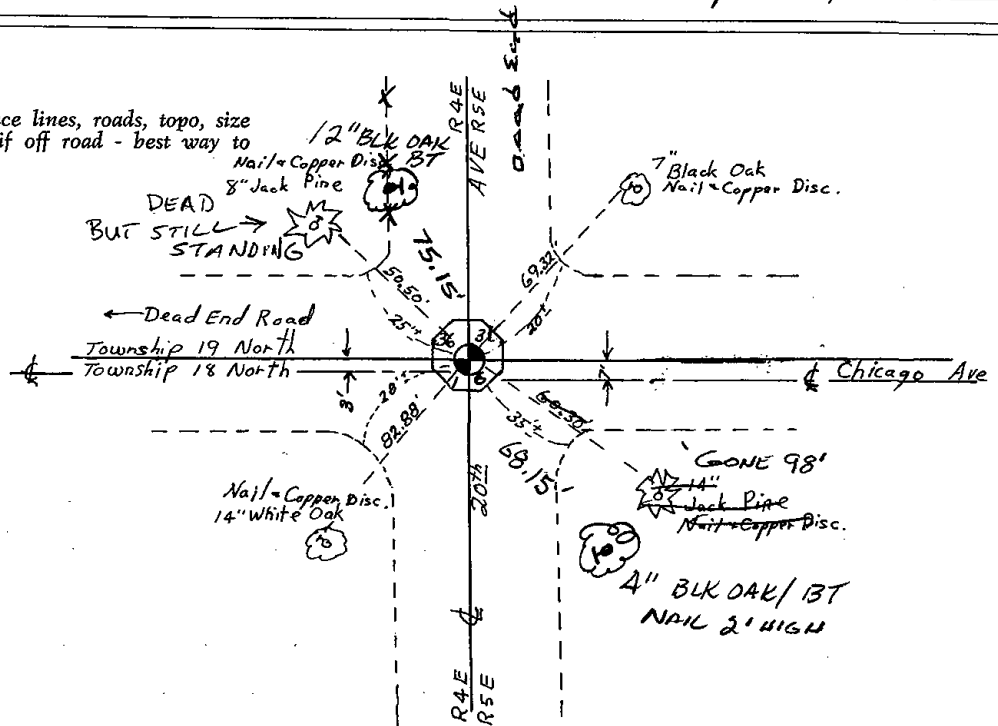
DATA SHOWN HERE ON
CERTIFIED CORRECT:

Anthony B. Kiedrowski
Registered Land Surveyor

DATE: April 13, 1991

TIE SKETCH

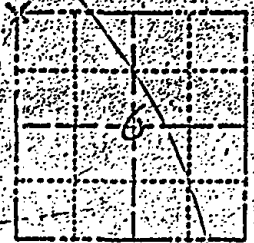
Show at least four ties, also fence lines, roads, topo, size and type of witness trees and if off road - best way to arrive at corner.



Government Land Corner Certificate

COUNTY ADAMS County
 TYPE OF MONUMENT: Harrison Monument
 STATE PLANE COORDINATES: N _____
 E _____
 ELEVATION: M.S.L. DATUM: _____
 THETA ANGLE: _____
 FIELD BOOK: 77 PAGE 131
 DRAWN BY: Lloyd W. Scott

CORNER NO. 1
 SECTION 6
 TOWN 18
 RANGE 5



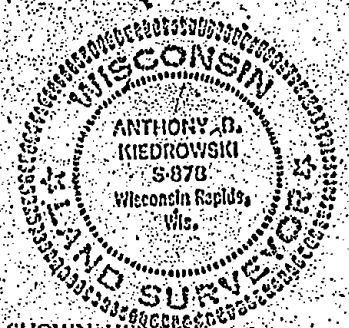
LOCATION (Indicated by 'X')

BASIS FOR MONUMENT LOCATION

Show info such as: History of corner, with reference to Vol. and pg., dates, surveyor, exact description of monument replaced, if location computed, by taped or EDM traverse; landowner remarks, etc. (Use reverse side if necessary)

Excavated large area with backhoe. Found nothing. No record of any resurveys. N - S location of corner set by analyzing a traverse of the section, comparing original distances and possession lines. The E - W location similarly determined.

SEAL:



DATA SHOWN HERE ON CERTIFIED CORRECT:

Anthony B. Kiedrowski
Registered Land Surveyor

DATE: April 13, 1981

6-28-94 Tres OK MC

TIE SKETCH

Show at least four ties, also fence lines, roads, topo, size and type of witness trees and if off road best way to arrive at corner.

