

PUBLIC LAND SURVEY MONUMENT RECORD

TYPE OF MONUMENT: HARRISON
ADAMS COUNTY COORDINATES, NAD 83 (2007)

N. 255801.012

E. 522906.870

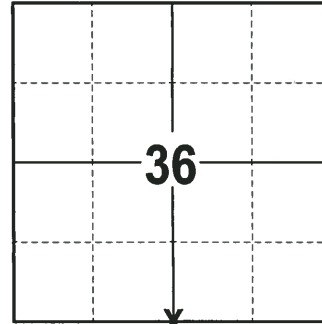
ELEVATION- - - DATUM - -

FIELD WORK DATE: 01/16/2018

BASIS FOR MONUMENT LOCATION

1980 - PLS 1344 SET THE CORNER 1/2 WAY AND ON LINE PER M.C. SMITH'S NOTES VOL. 1, PG. 186, ADAMS COUNTY SURVEYOR RECORDS. THE CORNER FITS VERY WELL WITH THE STREAM TO THE EAST OF THE CORNER AS NOTED IN THE ORIGINAL NOTES. SET A HARRISON MONUMENT AT THE CORNER LOCATION AND TIED OUT.

2018 - PLS 2994 FOUND A HARRISON MONUMENT 2" ABOVE THE GROUND SURFACE. FOUND NO EVIDENCE OF ANY OF THE WITNESSES. ACCEPTED THE HARRISON MONUMENT AS THE BEST EVIDENCE OF THE CORNER LOCATION. SET 4 NEW TIES AND MEASURED TO THE TIES.



LOCATION
(INDICATE CORNER BY "X")

SEAL:

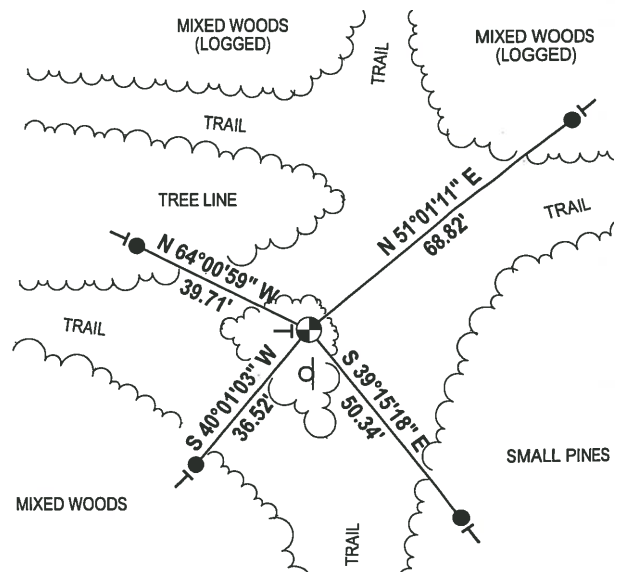
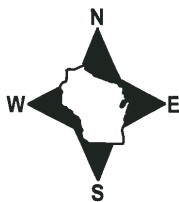


DATA SHOWN HERE ON THIS TIE SHEET IS CORRECT AND COMPLETE TO THE BEST OF MY KNOWLEDGE AND BELIEF.

PROFESSIONAL LAND SURVEYOR

DATE 3-1-18

- TIE SKETCH



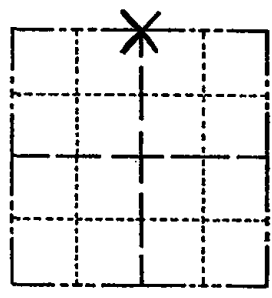
- 3/4" x 18" IRON REBAR SET, 1.50#/FT
- ⊕ HARRISON FOUND
- └ VINYL "T" POST
- └ ARROW SIGN

Government Land Corner Certificate

WARR. DIST
4/21/80
RN-SS

CORNER NO. 12
SECTION 1
TOWN 18
RANGE 5

Adams County
TYPE OF MONUMENT: HARRISON STANDARD Temp 1" 2" = 1"
STATE PLANE COORDINATES: N _____
E _____
ELEVATION — M.S.L. DATUM: _____
THETA ANGLE: _____
FIELD BOOK: 75 PAGE 100
DRAWN BY: R. NUBER



LOCATION
(Indicated by 'X')

BASIS FOR MONUMENT LOCATION

Show info such as: History of corner, with reference to Vol. and pg., dates, surveyor; exact description of monument replaced; if location computed, by taped or EDM traverse; landowner remarks, etc. (Use reverse side if necessary)

Set corner $\frac{1}{2}$ way and on line as per M.C. Smith Vol. 1, Pg. 186, Adams County Surveyor Records. Corner fits very well with stream to the East of this corner as noted in the original notes.

SEAL:



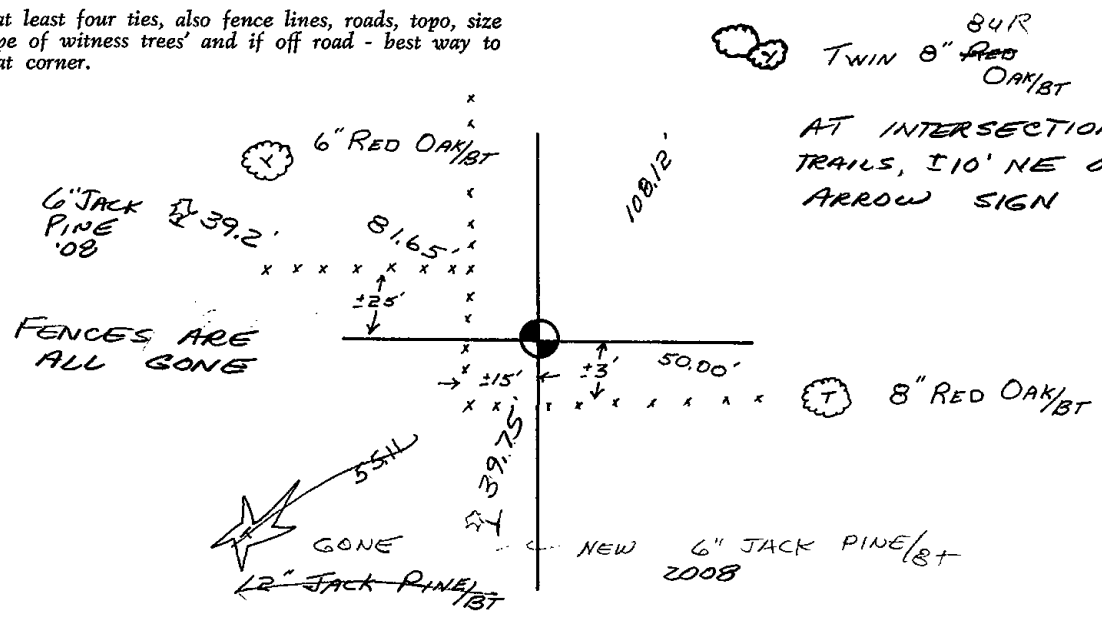
DATA SHOWN HERE ON
CERTIFIED CORRECT:

Kent B. Heppe
Registered Land Surveyor

DATE: Jan 16, 1980

TIE SKETCH

Show at least four ties, also fence lines, roads, topo, size and type of witness trees and if off road - best way to arrive at corner.



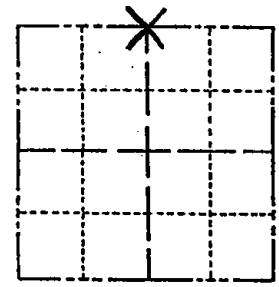
84R
TWIN 8" Red
OAK/ST
AT INTERSECTION OF 5
TRAILS, 110' NE OF SNOWMOBILE
ARROW SIGN

Government Land Corner Certificate

1/10/80
RN-55

Adams County
 TYPE OF MONUMENT: HARRISON STANDARD
 STATE PLANE COORDINATES: N _____
 E _____
 ELEVATION — M.S.L. DATUM: _____
 THETA ANGLE: _____
 FIELD BOOK: 75 PAGE 100
 DRAWN BY: R. NUBER

CORNER NO. 12
 SECTION 1
 TOWN 18
 RANGE 5



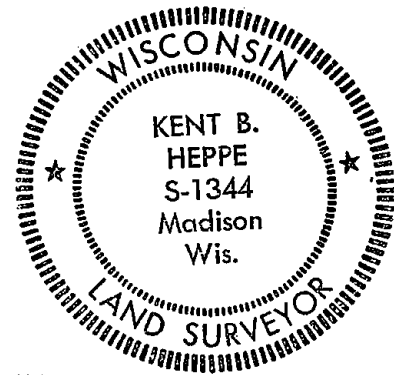
LOCATION
(Indicated by 'X')

BASIS FOR MONUMENT LOCATION

Show info such as: History of corner, with reference to Vol. and pg., dates, surveyor; exact description of monument replaced; if location computed, by taped or EDM traverse; landowner remarks, etc. (Use reverse side if necessary)

Set corner $\frac{1}{2}$ way and on line as per M.C. Smith Vol. 1, Pg. 186, Adams County Surveyor Records. Corner fits very well with stream to the East of this corner as noted in the original notes.

SEAL:



DATA SHOWN HERE ON CERTIFIED CORRECT:

Kent B. Heppe
Registered Land Surveyor

DATE: Jan 16, 1980

2-A-04 Ties ON MC + SH

TIE SKETCH

Show at least four ties, also fence lines, roads, topo, size and type of witness trees and if off road - best way to arrive at corner.

