

PUBLIC LAND SURVEY MONUMENT RECORD

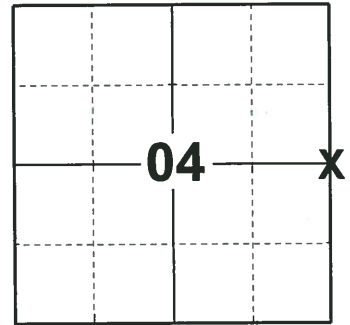
TYPE OF MONUMENT: HARRISON
ADAMS COUNTY COORDINATES, NAD 83 (2007)

N. 253125.333

E. 509667.984

ELEVATION- _____ DATUM _____

FIELD WORK DATE: 10/15/2018



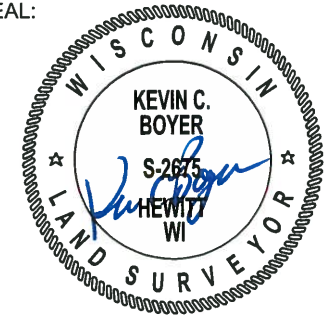
LOCATION
(INDICATE CORNER BY "X")

BASIS FOR MONUMENT LOCATION

1977 - PLS 878 RAN EDM/T2 TRAVERSE AROUND SECTION 4 TO DETERMINE SEARCH AREAS AND ANALYZE POSSESSION. DUG OPPOSITE E-W FENCE AT THE CENTERLINE OF THE ROAD AND FOUND NO EVIDENCE OF THE CORNER. DUE TO LACK OF EVIDENCE THE CORNER IS SET AT THIS POINT. ACCEPTED THE ROAD AND POSSESSION LINES AS THE BEST AVAILABLE EVIDENCE OF THE CORNER LOCATION. THE CORNER IS NOT ON LINE OR EQUIDISTANT BETWEEN SECTION CORNERS. SET A HARRISON MONUMENT AT THE CORNER LOCATION AND TIED OUT.

2018 - PLS 2675 FOUND A HARRISON MONUMENT FLUSH WITH THE ROAD SURFACE, 1 TIE AND 1 WITNESS. THE MONUMENT AGREES WITH THE EXISTING TIE AND WITNESS. ACCEPTED THE HARRISON MONUMENT AS THE CORNER LOCATION. SET 3 NEW TIES AND MEASURED TO THE TIES AND WITNESS.

SEAL:



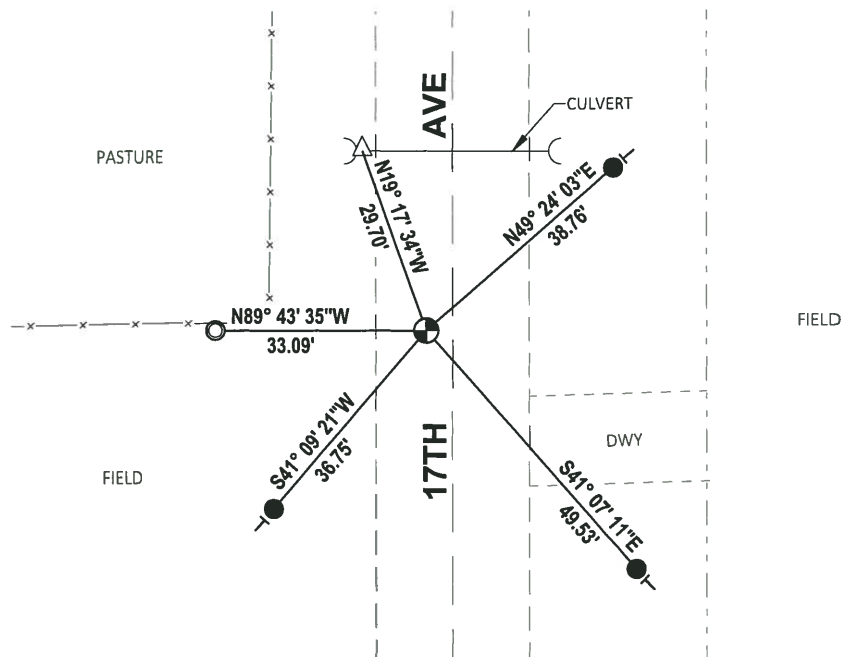
DATA SHOWN HERE ON THIS TIE SHEET IS CORRECT AND COMPLETE TO THE BEST OF MY KNOWLEDGE AND BELIEF.

PROFESSIONAL LAND SURVEYOR

DATE 12/4/2018

- TIE SKETCH

NOTE: THE CORNER FALLS 4± WEST OF THE CENTERLINE OF 17TH AVE.

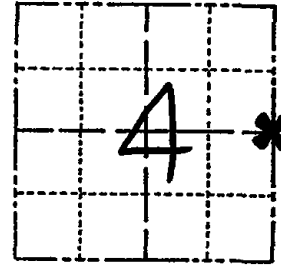


- SET 3/4" x 18" IRON REBAR, 1.50#/FT
- △ FOUND MAG NAIL IN CULVERT TOP
- FOUND 1-1/4" O.D. IRON PIPE
- ⊙ FOUND HARRISON MONUMENT
- ⊣ VINYL "T" POST

ADAMS COUNTY
Survey Monument Record

CORNER NO. 17
 SECTION 4
 TOWN 18
 RANGE 5

TYPE OF MONUMENT: HARRISON STANDARD
 STATE PLANE COORDINATES: N _____
 E _____
 ELEVATION — M.S.L. DATUM: _____
 THETA ANGLE: _____
 FIELD BOOK: 54 PAGE 8



LOCATION
 (Indicated by 'X')

BASIS FOR MONUMENT LOCATION

(Use reverse side if necessary)

Show info such as: History of corner, with reference to Vol. and pg, dates, surveyor; exact description of monument replaced; if location computed, by taped or EDM traverse; landowner remarks, etc.

SEAL:



Ran EDM/T2 traverse around Section 4 to determine search areas and analyze possession. Dug opposite E-W fence at centerline of road and found nothing. Due to lack of evidence I set corner at this point.

I accepted road and possession lines as best available evidence. Corner is not on line or equidistant between section corners.

- OK 7-28-78 RK-SS
- OK 2-29-83 GR-SS
- OK 9-2-92 JG
- 2-GONE, 2-NEW, MON. OK, 2-18-98
- OK, 2-5-03-JG
- OK, 12-18-07-JG

CERTIFIED CORRECT:

Anthony B. Kiedrowski
 Registered Land Surveyor

DATE: 9/6/77

TIE SKETCH

(Show at least four ties)

