

01  
SECTION

18  
TOWN

04  
RANGE

# ADAMS COUNTY

COUNTY CORNER NO: 33

ROMPORTOL ID: 41804010000

## PUBLIC LAND SURVEY MONUMENT RECORD

TYPE OF MONUMENT: HARRISON (BROKEN-TOP)  
ADAMS COUNTY COORDINATES, NAD 83 (2007)

N. 250611.251

E. 494715.522

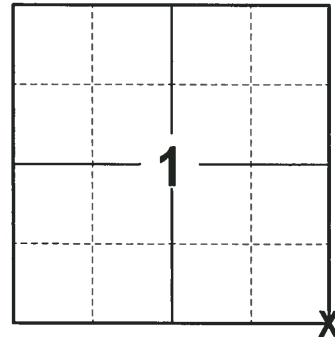
ELEVATION-      -      -      DATUM      -      -     

FIELD WORK DATE: 12/14/2017

### BASIS FOR MONUMENT LOCATION

2013 - PLS 1478 RE-DRAFTED PRIOR TIE SHEET BY ANTHONY B. KIEDROWSKI FROM 1981. NO RECORD OF RESURVEY. KIEDROWSKI EXCAVATED WITH A BACKHOE AND FOUND NOTHING. THIS CORNER WAS SET HALF WAS BETWEEN AN EXISTING HARRISON MONUMENT AT THE W1/4 CORNER OF SECTION 7 AND THE STONE FOUND AT THE W1/4 CORNER OF SECTION 6. SINCE A STRAIGHT LINE BETWEEN THE AFOREMENTIONED CORNERS WOULD HAVE PUT THIS CORNER COMPLETELY OFF THE ROAD TO THE WEST, RAN A STRAIGHT LINE FROM THE NW CORNER AS IT WAS ESTABLISHED, THRU THE STONE AT THE W1/4 CORNER TO THIS CORNER. SET HARRISON MONUMENT AT THE CALCULATED LOCATION AND TIED OUT.

2017 - PLS 2994 FOUND A HARRISON MONUMENT WITH A BROKEN-TOP 4" BELOW THE ROAD SURFACE AND 1 TIE. THE MONUMENT AGREES WITH THE EXISTING TIE. ACCEPTED THE HARRISON MONUMENT WITH A BROKEN-TOP AS THE CORNER LOCATION. SET 4 NEW TIES AND MEASURED TO THE TIES.



**LOCATION**  
(INDICATE CORNER BY "X")

SEAL:



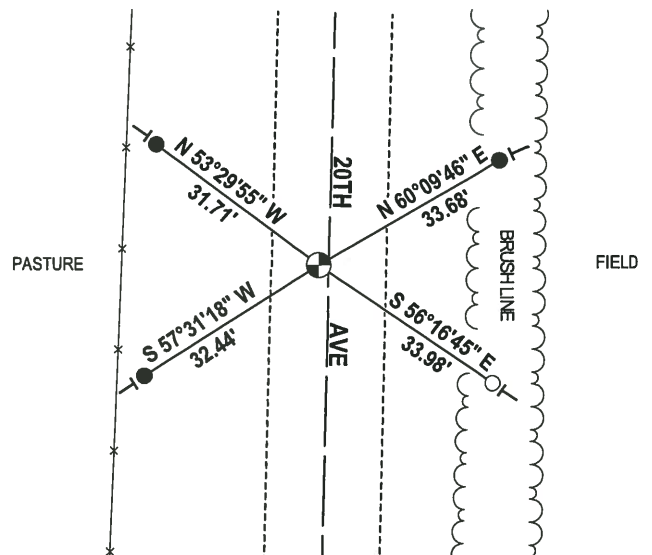
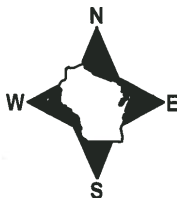
DATA SHOWN HERE ON THIS TIE SHEET IS CORRECT AND COMPLETE TO THE BEST OF MY KNOWLEDGE AND BELIEF.

PROFESSIONAL LAND SURVEYOR

DATE 1-4-18

### - TIE SKETCH -

NOTE: THE CORNER FALLS 2'± WEST OF THE CENTERLINE OF 20TH AVE.



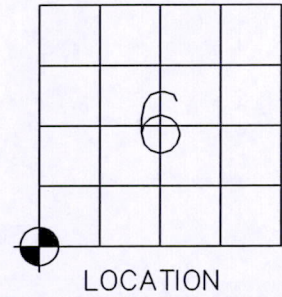
- 3/4" x 18" IRON REBAR SET, 1.50#/FT
- 1-1/4" O.D. IROD PIPE W/ALUMINUM CAP FOUND
- ⊕ HARRISON (BROKEN-TOP) FOUND
- VINYL "T" POST

U.S PUBLIC LAND SURVEY MONUMENT RECORD  
ADAMS COUNTY, WISCONSIN

CORNER NO. 21  
SECTION 6  
TOWN 18N  
RANGE 5E

TYPE OF MONUMENT: HARRISON MONUMENT

STATE PLANE COORDINATES: N: NOT APPLICABLE  
E: NOT APPLICABLE  
ELEVATION \_ MSL DATUM: NOT APPLICABLE  
THETA ANGLE: NOT APPLICABLE  
FIELD BOOK: 77 PAGE: 130  
DRAWN BY: ERIC SCHOOT



LOCATION

BASIS FOR MONUMENT LOCATION

Show info such as: History of corner, with reference to Vol. and pg., dates, surveyor; exact description of monument replaced if location computed, by taped or EDM traverse, landowner remarks, etc.

No record of resurvey. Excavated with backhoe, found nothing. This corner set half way between an existing Harrison monument at the W 1/4 corner of section 7 and the stone found at the W 1/4 corner of section 6. Since a straight line between the aforementioned corners would have put this corner completely off the road to the west, I ran a straight line from the NW corner as I established it, thru the stone at the W 1/4 corner to this corner.

-Anthony B. Kiedrowski, 4-13-1981

THIS IS A COMPILATION AND REDRAFT OF PREVIOUS MONUMENT RECORDS.  
BASIS FOR MONUMENT LOCATION IS FROM ORIGINAL REMONUMENTATION.

SEAL

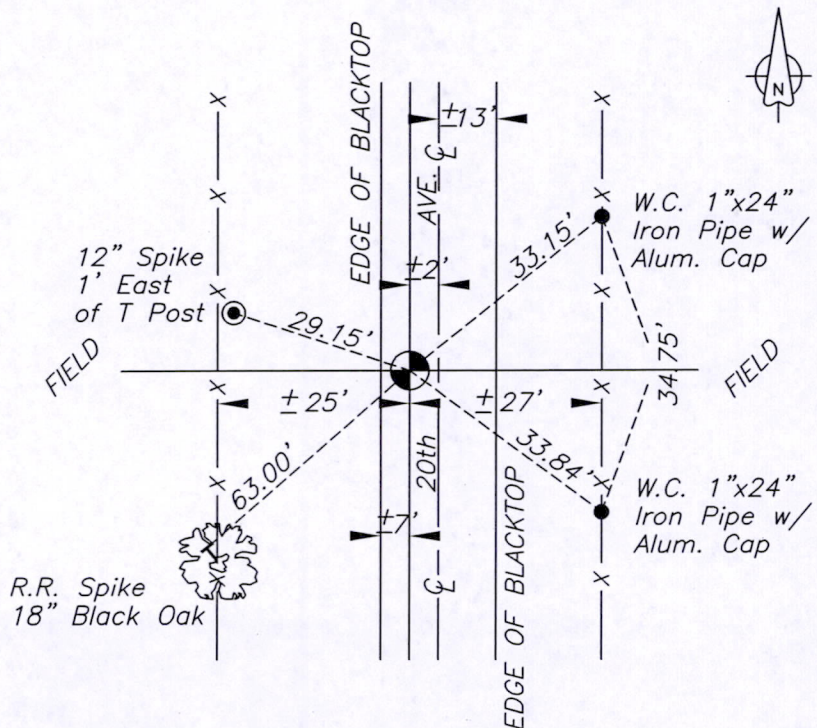


DATA SHOWN HEREON  
CERTIFIED CORRECT:

*Gregory P. Rhinehart*

REGISTERED LAND SURVEYOR  
DATE: 21 JUNE, 2013

TIE SKETCH: No Scale



MAINTENANCE RECORD

DATE	INIT.	REMARKS

R.R. Spike  
18" Black Oak