

6  
SECTION

18  
TOWN

05  
RANGE

# ADAMS COUNTY

COUNTY CORNER NO: 23

ROMPORTOL ID: 41805060000

## PUBLIC LAND SURVEY MONUMENT RECORD

TYPE OF MONUMENT: HARRISON

ADAMS COUNTY COORDINATES, NAD 83 (2007)

N. 250495.061

E. 499186.196

ELEVATION-        DATUM       

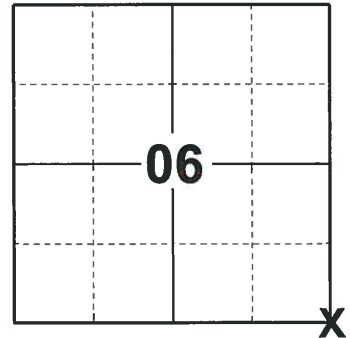
FIELD WORK DATE: 10/17/2018

### BASIS FOR MONUMENT LOCATION

1980 - PLS 878 NO RECORD OF ANY RESURVEYS. EXCAVATED WITH A BACKHOE AND FOUND THE BOTTOM 16" OF STAIN FROM A 6" DIA. DUG IN POST. SET A HARRISON MONUMENT AT THAT POINT AND TIED OUT.

2010 - PLS 1473 FOUND A HARRISON MONUMENT BURIED 1.1' UNDER THE SURFACE. SET A 5" GALVANIZED LANDSCAPING SPIKE OVER THE TOP OF THE MONUMENT AND TIED OUT.

2018 - PLS 2675 FOUND A 5" SPIKE IN THE ROAD SURFACE AND 4 TIES. REMOVED THE 5" SPIKE AND FOUND A HARRISON MONUMENT 12" BELOW THE ROAD SURFACE. THE MONUMENT AGREES WITH THE EXISTING TIES. ACCEPTED THE HARRISON MONUMENT AS THE CORNER LOCATION AND RE-MEASURED TO THE EXISTING TIES.



LOCATION

(INDICATE CORNER BY "X")

SEAL:



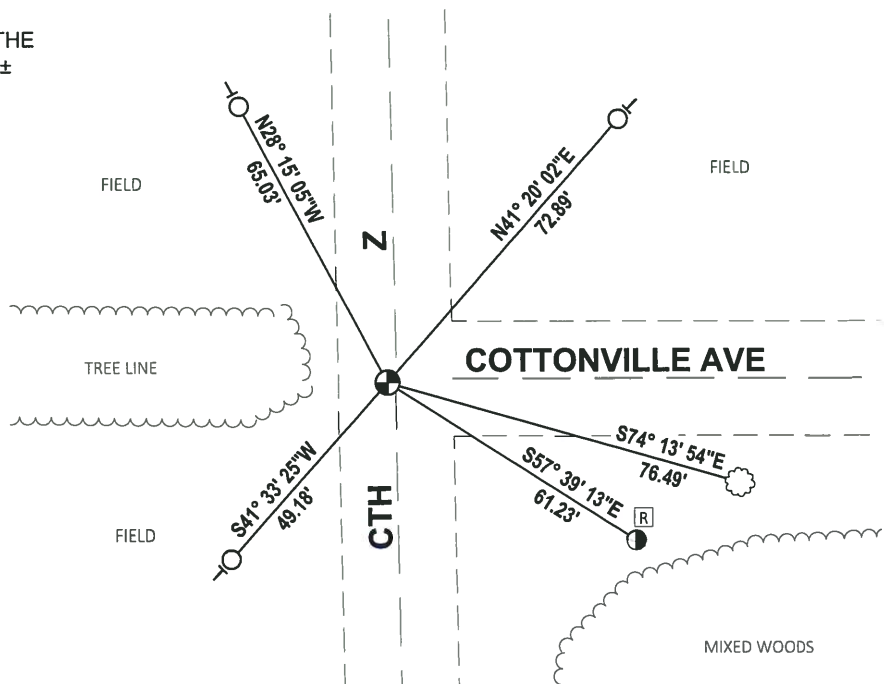
DATA SHOWN HERE ON THIS TIE SHEET IS CORRECT AND COMPLETE TO THE BEST OF MY KNOWLEDGE AND BELIEF.

PROFESSIONAL LAND SURVEYOR

DATE 12/4/2018

### - TIE SKETCH

NOTE: THE CORNER FALLS 1± SOUTH OF THE CENTERLINE OF COTTONVILLE AVE AND 2± WEST OF THE CENTERLINE OF CTH Z.

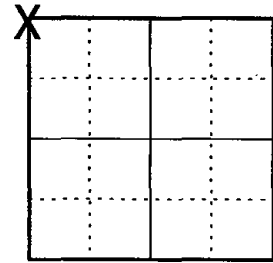


- FOUND 3/4" IRON ROD
- FOUND 5/8" IRON ROD
- ⊕ FOUND HARRISON MONUMENT
- Ⓜ RIGHT-OF-WAY GUARD POST
- └ VINYL "T" POST

# U.S PUBLIC LAND SURVEY MONUMENT RECORD ADAMS COUNTY, WISCONSIN

CORNER NO. 23  
SECTION 8  
TOWN 18 N  
RANGE 5 E

TYPE OF MONUMENT: 5" GALVANIZED LANDSCAPING SPIKE OVER HARRISON MON.  
ADAMS COUNTY COORDINATES:  
NORTH: 250495.10'  
EAST: 499186.20'



LOCATION

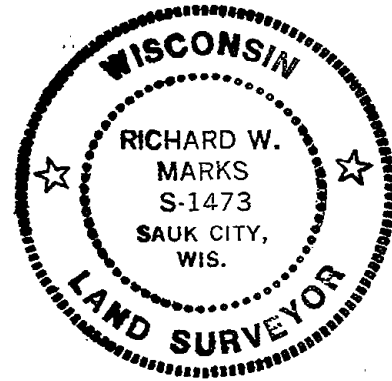
ELEVATION \_ MSL DATUM: NOT APPLICABLE  
THETA ANGLE: NOT APPLICABLE  
FIELD BOOK:  
DRAWN BY: DANIEL MARKS

### BASIS FOR MONUMENT LOCATION

On August 5, 1980 Anthony B. Kiedrowski excavated with a backhoe and found a stain from a dug in post. He set a Harrison monument in this location. Corner was buried 1.1' under the surface so I set a 5" galvanized landscaping spike over the top of the monument.



SEAL

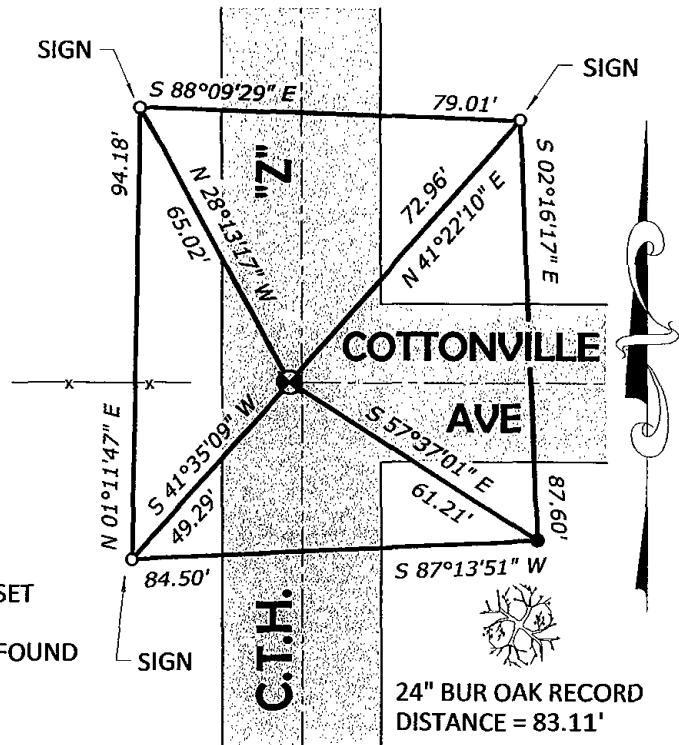


DATA SHOWN HEREON CERTIFIED CORRECT:

REGISTERED LAND SURVEYOR

DATE: August 1, 2010

TIE SKETCH: No Scale



### MAINTENANCE RECORD

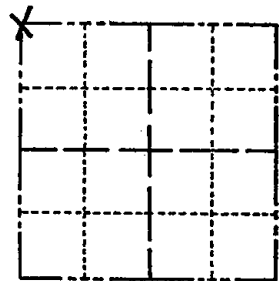
| DATE | INIT. | REMARKS |
|------|-------|---------|
|      |       |         |
|      |       |         |
|      |       |         |
|      |       |         |
|      |       |         |
|      |       |         |

- 3/4" IRON ROD SET
- 5/8" IRON ROD FOUND BY RW POST

# Government Land Corner Certificate

ADAMS County  
 TYPE OF MONUMENT: Harrison  
 STATE PLANE COORDINATES: N \_\_\_\_\_  
 E \_\_\_\_\_  
 ELEVATION — M.S.L. DATUM: \_\_\_\_\_  
 THETA ANGLE: \_\_\_\_\_  
 FIELD BOOK: 57 (102) PAGE 119 (81)  
 DRAWN BY: S. KMIEC

CORNER NO. 23  
 SECTION 8  
 TOWN 18  
 RANGE 5



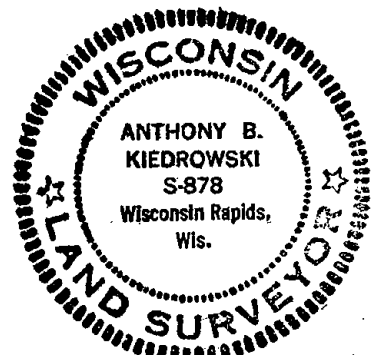
LOCATION  
(Indicated by 'X')

## BASIS FOR MONUMENT LOCATION

Show info such as: History of corner, with reference to Vol. and pg., dates, surveyor; exact description of monument replaced; if location computed, by taped or EDM traverse; landowner remarks, etc. (Use reverse side if necessary)

No record of resurveys. Excavated with backhoe. Found bottom 16" of stain from 6" dia dug in post. Set Harrison monument at that point.

SEAL:



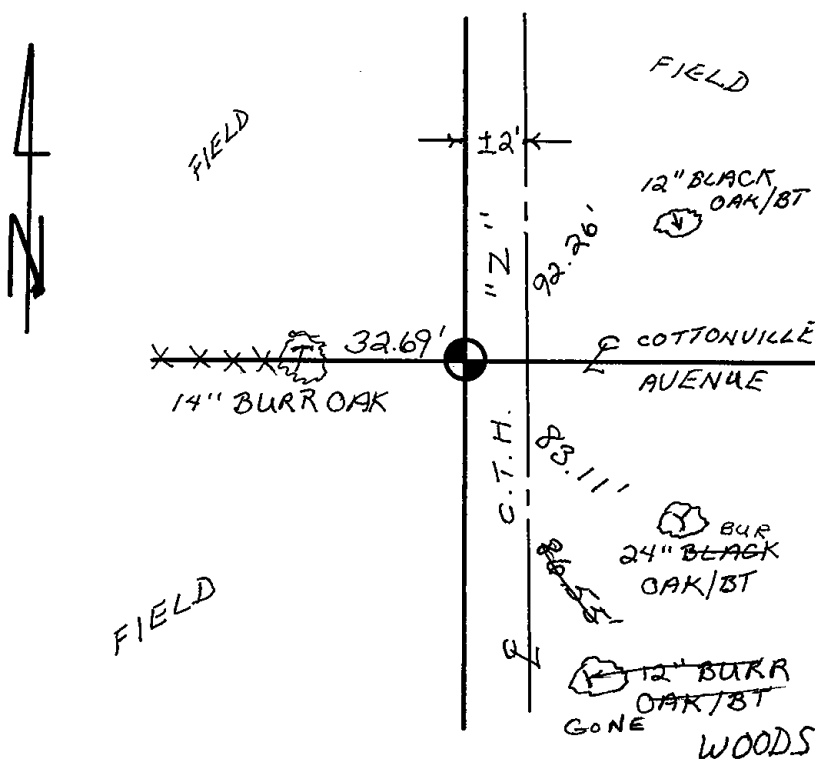
DATA SHOWN HERE ON  
CERTIFIED CORRECT:

Anthony B. Kiedrowski  
Registered Land Surveyor

DATE: 8/5/80

## TIE SKETCH

Show at least four ties, also fence lines, roads, topo, size and type of witness trees' and if off road - best way to arrive at corner.



## MAINTENANCE RECORD

| Date     | Init. | Remarks    |
|----------|-------|------------|
| 2-28-83  | GR-SS | OK         |
| 9-8-92   | JG    | 1-TIE GONE |
| 2-5-03   | JG    | OK         |
| 12-18-07 | JG    | OK         |
|          |       |            |
|          |       |            |