

PUBLIC LAND SURVEY MONUMENT RECORD

TYPE OF MONUMENT: HARRISON
 ADAMS COUNTY COORDINATES, NAD 83 (2007)

N. 250491.817

E. 509711.221

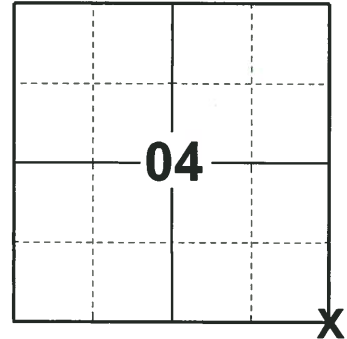
ELEVATION- _____ DATUM _____

FIELD WORK DATE: 10/15/2018

BASIS FOR MONUMENT LOCATION

1974 - PLS 1103 EXCAVATION WITH A BACKHOE YIELDED NO EVIDENCE OF THE CORNER OR ANY SUBSEQUENT REMONUMENTATION OF THE CORNER. RAN TAPE/TRANSIT TRAVERSE AROUND SECTION 9 AND ESTABLISHED THE NORTHEAST CORNER AFTER AN ANALYSIS OF THE ORIGINAL NOTES AND THE EVIDENCE IN THE FIELD. SET A HARRISON AT THE CORNER LOCATION AND TIED OUT.

2018 - PLS 2675 FOUND A HARRISON MONUMENT 4" BELOW THE ROAD SURFACE AND 1 WITNESS TREE STUMP. THE MONUMENT AGREES WITH THE EXISTING WITNESS TREE STUMP. ACCEPTED THE HARRISON MONUMENT AS THE CORNER LOCATION. SET 4 NEW TIES AND MEASURED TO THE TIES AND WITNESS TREE STUMP.



LOCATION
 (INDICATE CORNER BY "X")

SEAL:



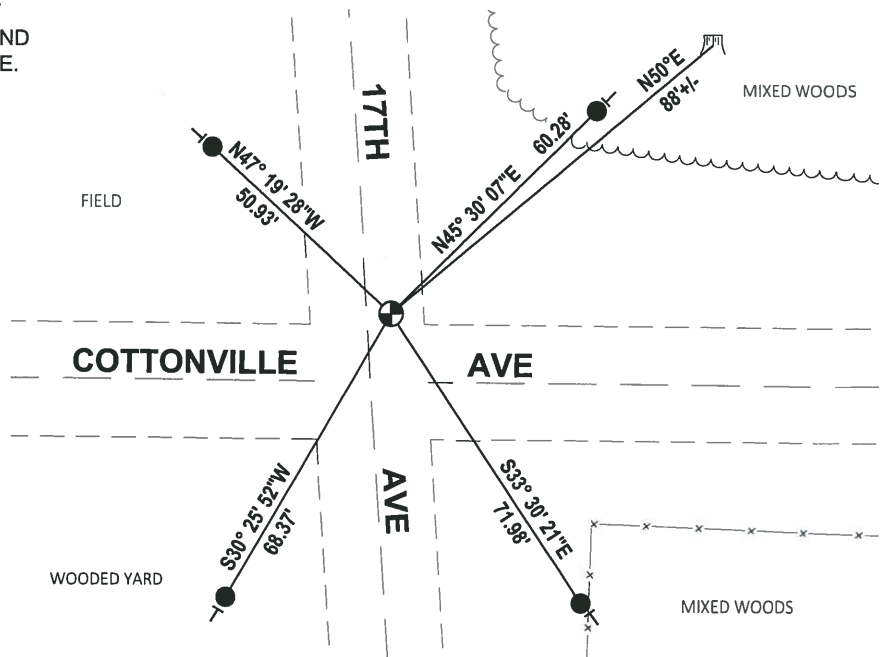
DATA SHOWN HERE ON THIS TIE SHEET IS CORRECT AND COMPLETE TO THE BEST OF MY KNOWLEDGE AND BELIEF.

PROFESSIONAL LAND SURVEYOR

DATE 12/4/2018

- TIE SKETCH

NOTE: THE CORNER FALLS 14'± NORTH OF THE CENTERLINE OF COTTONVILLE AVE AND 5'± EAST OF THE CENTERLINE OF 17TH AVE.



- SET 3/4" x 18" IRON REBAR, 1.50#/FT
- ⊕ FOUND HARRISON MONUMENT
- ┆ VINYL "T" POST
- ⌵ WITNESS TREE STUMP

ADAMS COUNTY

Survey Monument Record

TYPE OF MONUMENT: Standard Harrison

STATE PLANE COORDINATES: N _____

E _____

ELEVATION — M.S.L. DATUM: _____

THETA ANGLE: _____

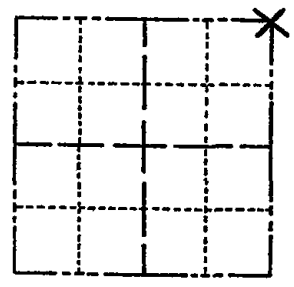
FIELD BOOK: _____ PAGE _____

CORNER NO. 543

SECTION 9

TOWN 18

RANGE 5



LOCATION
(Indicated by 'X')

SEAL:

BASIS FOR MONUMENT LOCATION

(Use reverse side if necessary)

Show info such as: History of corner, with reference to Vol. and pg, dates, surveyor; exact description of monument replaced; if location computed, by taped or EDM traverse; landowner remarks, etc.

Excavation with backhoe yielded no evidence of the corner or any subsequent remonumentation of the corner.

Ran tape/transit traverse around Section 9 and established Northeast corner after an analysis of the original notes and the evidence in the field.



CERTIFIED CORRECT:

Dale C. Hagen
Registered Land Surveyor

DATE: October 2, 1974

- OK 7-28-78 RK-SS
- OK 2-28-83 GR-SS
- 1-TIE GONE, 1-NEW TIE, 9-2-92-JG
- OK, 2-9-98-JG
- 1-GONE, 2-5-03-JG
- OK, 12-18-07-JG

TIE SKETCH

(Show at least four ties)

