

03  
SECTION

18  
TOWN

05  
RANGE

# ADAMS COUNTY

COUNTY CORNER NO: 28

ROMPORTOL ID: 41805030020

## PUBLIC LAND SURVEY MONUMENT RECORD

TYPE OF MONUMENT: HARRISON

ADAMS COUNTY COORDINATES, NAD 83 (2007)

N. 250485.316

E. 512385.161

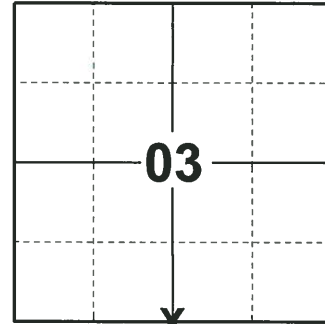
ELEVATION- - - - DATUM - - - -

FIELD WORK DATE: 10/15/2018

### BASIS FOR MONUMENT LOCATION

1980 - PLS 878 NO RECORD OF ANY RESURVEYS. EXCAVATED A 10'x10" HOLE ON CENTERLINE/CENTERLINE AND FOUND NO EVIDENCE OF THE CORNER. CALCULATED THE CORNER LOCATION ON A STRAIGHT LINE AND EQUIDISTANT BETWEEN SECTION CORNERS. SET A HARRISON MONUMENT AT THE CALCULATED LOCATION AND TIED OUT.

2018 - PLS 2675 FOUND A HARRISON MONUMENT FLUSH WITH THE ROAD SURFACE AND 1 WITNESS TREE (ORIGIN UNKNOWN). ACCEPTED THE HARRISON MONUMENT AS THE BEST EVIDENCE OF THE CORNER LOCATION. AFTER REVIEW THE CORNER FALLS NEAR EQUIDISTANT AND ON LINE BETWEEN ADJACENT SECTION CORNERS. SET 4 NEW TIES AND MEASURED TO THE TIES AND WITNESS TREE.



**LOCATION**

(INDICATE CORNER BY "X")

SEAL:



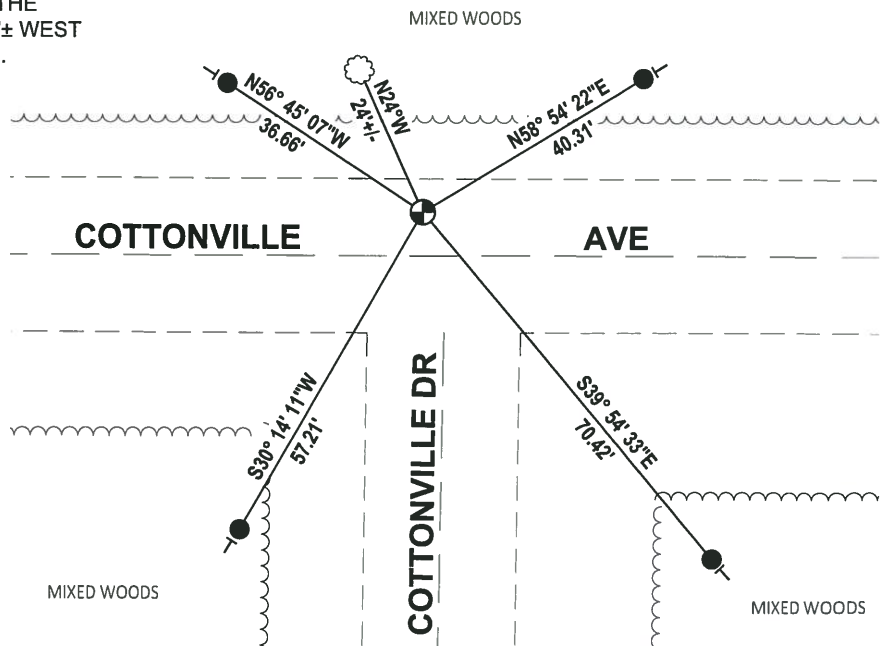
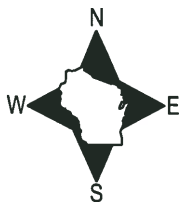
DATA SHOWN HERE ON THIS TIE SHEET IS CORRECT AND COMPLETE TO THE BEST OF MY KNOWLEDGE AND BELIEF.

PROFESSIONAL LAND SURVEYOR

DATE 12/4/2018

### TIE SKETCH

NOTE: THE CORNER FALLS 7± NORTH OF THE CENTERLINE OF COTTONVILLE AVE AND 3± WEST OF THE CENTERLINE OF COTTONVILLE DR.

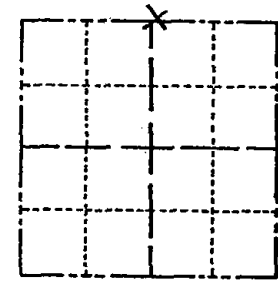


- SET 3/4" x 18" IRON REBAR, 1.50#/FT
- ⊕ FOUND HARRISON MONUMENT
- ┆ VINYL "T" POST
- ☼ WITNESS TREE

# Government Land Corner Certificate

ADAMS County  
 TYPE OF MONUMENT: HARRISON  
 STATE PLANE COORDINATES: N \_\_\_\_\_  
 E \_\_\_\_\_  
 ELEVATION — M.S.L. DATUM: \_\_\_\_\_  
 THETA ANGLE: \_\_\_\_\_  
 FIELD BOOK: (102) PAGE (75)  
 DRAWN BY: S. KMIEC

CORNER NO. 28  
 SECTION 10  
 TOWN 18  
 RANGE 5



LOCATION  
(Indicated by 'X')

## BASIS FOR MONUMENT LOCATION

Show info such as: History of corner, with reference to Vol. and pg., dates, surveyor; exact description of monument replaced; if location computed, by taped or EDM traverse; landowner remarks, etc. (Use reverse side if necessary)

No record of any resurveys. Excavated 10 x 10 hole on centerline/centerline and found nothing. This corner is set on a straight line and equidistant between section corners.

SEAL:



DATA SHOWN HERE ON  
CERTIFIED CORRECT:

*Anthony B. Kiedrowski*  
Registered Land Surveyor

DATE: 8/25/80

## TIE SKETCH

Show at least four ties, also fence lines, roads, topo, size and type of witness trees and if off road - best way to arrive at corner.

