

03
SECTION

18
TOWN

05
RANGE

ADAMS COUNTY

COUNTY CORNER NO: 29

ROMPORTOL ID: 41805030000

PUBLIC LAND SURVEY MONUMENT RECORD

TYPE OF MONUMENT: HARRISON
ADAMS COUNTY COORDINATES, NAD 83 (2007)

N. 250479.025

E. 515058.752

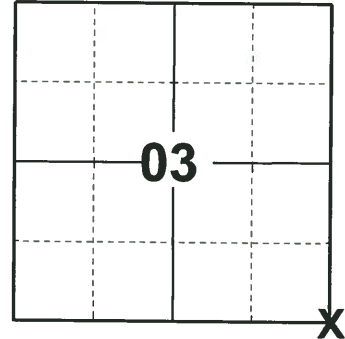
ELEVATION- - - DATUM - -

FIELD WORK DATE: 10/10/2018

BASIS FOR MONUMENT LOCATION

1980 - PLS 878 NO RECORD OF ANY RESURVEYS. EXCAVATED A 10'x10' HOLE ON THE CENTERLINE/CENTERLINE AND ALSO A 10'x8" HOLE JUST NORTH OF THE NORTH EDGE OF THE ROAD. FOUND NO EVIDENCE OF THE CORNER LOCATION. FOR THE N-S LOCATION HE DOUBLED THE DISTANCE FROM THE SW CORNER OF THIS SECTION TO THE POST FOUND AT THE W1/4 CORNER. FOR THE E-W DIRECTION HE TRAVERSED A MILE EAST AND WEST OF HERE AND BALANCED OUT POSSESSION LINES. SET A HARRISON MONUMENT AT THE CORNER LOCATION AND TIED OUT.

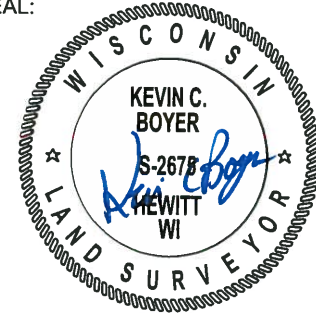
2018 - PLS 2675 FOUND A HARRISON MONUMENT 6" BELOW THE ROAD SURFACE AND 1 WITNESS. THE MONUMENT AGREES WITH THE EXISTING WITNESS. ACCEPTED THE HARRISON MONUMENT AS THE CORNER LOCATION. SET 4 NEW TIES AND MEASURED TO THE TIES AND WITNESS.



LOCATION

(INDICATE CORNER BY "X")

SEAL:



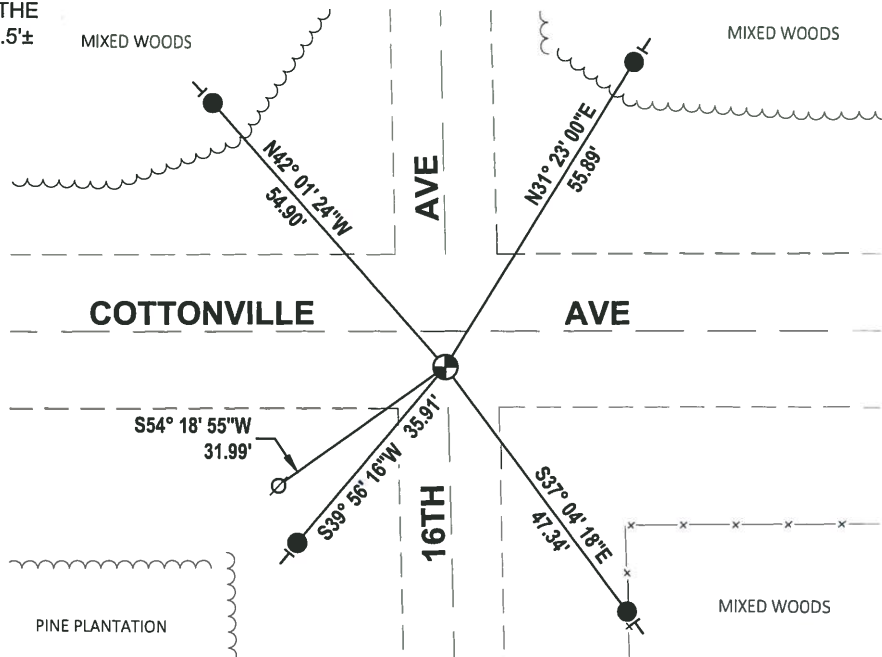
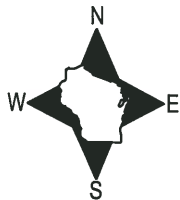
DATA SHOWN HERE ON THIS TIE SHEET IS CORRECT AND COMPLETE TO THE BEST OF MY KNOWLEDGE AND BELIEF.

PROFESSIONAL LAND SURVEYOR

DATE 12/4/2018

TIE SKETCH

NOTE: THE CORNER FALLS 6"± SOUTH OF THE CENTERLINE OF COTTONVILLE AVE AND 0.5'± WEST OF THE CENTERLINE OF 16TH AVE.

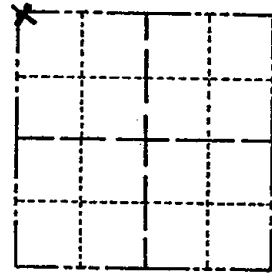


- SET 3/4" x 18" IRON REBAR, 1.50#/FT
- ⊙ FOUND HARRISON MONUMENT
- ⊘ WITNESS POWER POLE
- VINYL "T" POST

Government Land Corner Certificate

ADAMS County
 TYPE OF MONUMENT: HARRISON
 STATE PLANE COORDINATES: N _____
 E _____
 ELEVATION — M.S.L. DATUM: _____
 THETA ANGLE: _____
 FIELD BOOK: (102) PAGE (75)
 DRAWN BY: S. KMIEC

CORNER NO. 29
 SECTION 11
 TOWN 18
 RANGE 5



LOCATION
 (Indicated by 'X')

BASIS FOR MONUMENT LOCATION

Show info such as: History of corner, with reference to Vol. and pg., dates, surveyor; exact description of monument replaced; if location computed, by taped or EDM traverse; landowner remarks, etc. (Use reverse side if necessary)

No record of resurveys. Excavated 10' x 10' hole on centerline/centerline and also a 10 x 8' hole just north of the north edge of the road. Found nothing. For the n-s location I doubled the distance from the SW corner of this section to the post found at the W 1/4 corner. For the E -W direction I traversed a mile east and west of here and balanced out possession lines.

SEAL:



DATA SHOWN HERE ON
 CERTIFIED CORRECT:

Anthony B. Kiedrowski
 Registered Land Surveyor

DATE: 8/25/80

TIE SKETCH

Show at least four ties, also fence lines, roads, topo, size and type of witness trees and if off road - best way to arrive at corner.

