

02
SECTION

18
TOWN

05
RANGE

ADAMS COUNTY

COUNTY CORNER NO: 30

ROMPORTOL ID: 41805020020

PUBLIC LAND SURVEY MONUMENT RECORD

TYPE OF MONUMENT: HARRISON
ADAMS COUNTY COORDINATES, NAD 83 (2007)

N. 250504.386

E. 517691.913

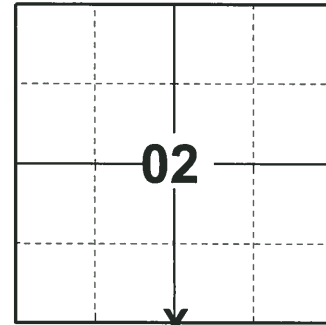
ELEVATION- _____ DATUM _____

FIELD WORK DATE: 10/10/2018

BASIS FOR MONUMENT LOCATION

1980 - PLS 878 NO RECORD OF ANY RESURVEYS. EXCAVATED THE AREA WITH A BACKHOE AND FOUND NO EVIDENCE OF THE CORNER. CALCULATED THE CORNER LOCATION HALFWAY BETWEEN SECTION CORNERS AND ON THE CENTERLINE OF THE ROAD. THERE APPEARS TO BE A BEND IN THE ROAD AT THIS POINT AND COULD NOT JUSTIFY A STRAIGHT LINE BETWEEN SECTION CORNERS. SET A HARRISON MONUMENT AT THE CALCULATED LOCATION AND TIED OUT.

2018 - PLS 2675 FOUND A HARRISON MONUMENT 10" BELOW THE ROAD SURFACE AND 1 WITNESS. THE MONUMENT AGREES WITH THE EXISTING WITNESS. ACCEPTED THE HARRISON MONUMENT AS THE CORNER LOCATION. SET 4 NEW TIES AND MEASURED TO THE TIES AND WITNESS.



LOCATION

(INDICATE CORNER BY "X")

SEAL:



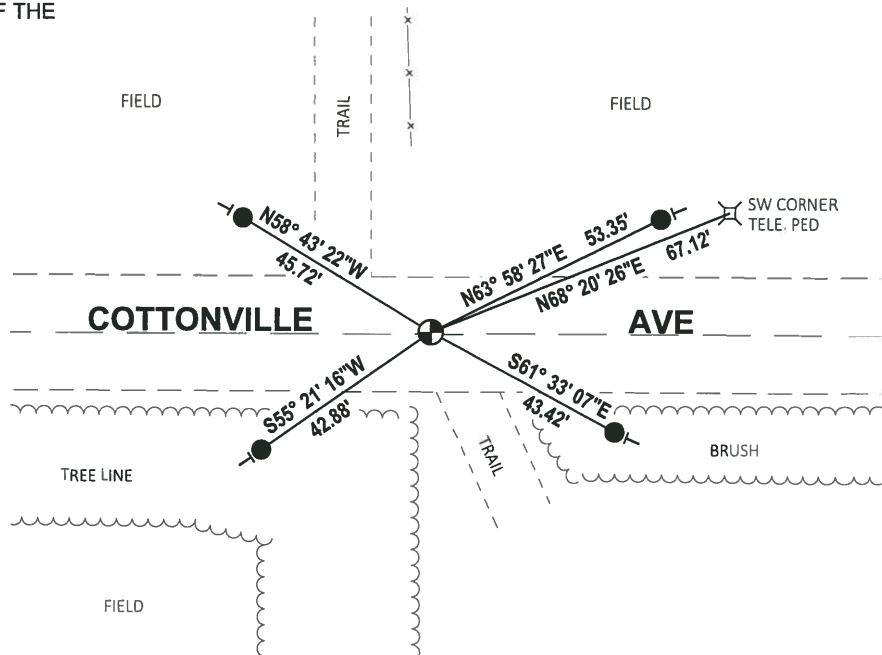
DATA SHOWN HERE ON THIS TIE SHEET IS CORRECT AND COMPLETE TO THE BEST OF MY KNOWLEDGE AND BELIEF.

PROFESSIONAL LAND SURVEYOR

DATE 12/4/2018

- TIE SKETCH -

NOTE: THE CORNER FALLS 0.5'± NORTH OF THE CENTERLINE OF COTTONVILLE AVE.

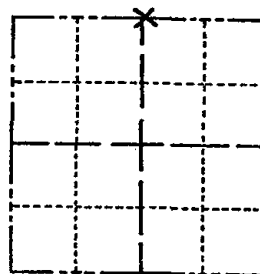


- SET 3/4" x 18" IRON REBAR, 1.50#/FT
- ⊙ FOUND HARRISON MONUMENT
- VINYL "T" POST

Government Land Corner Certificate

ADAMS County
 TYPE OF MONUMENT: HARRISON
 STATE PLANE COORDINATES: N _____
 E _____
 ELEVATION — M.S.L. DATUM: _____
 THETA ANGLE: _____
 FIELD BOOK: (102) PAGE (75)
 DRAWN BY: S. KMIEC

CORNER NO. 30
 SECTION 11
 TOWN 18
 RANGE 5



LOCATION
(Indicated by 'X')

BASIS FOR MONUMENT LOCATION

Show info such as: History of corner, with reference to Vol. and pg., dates, surveyor; exact description of monument replaced; if location computed, by taped or EDM traverse; landowner remarks, etc. (Use reverse side if necessary)

No record of any resurveys. Excavated area with backhoe, found nothing. This point set half way between section corners, and on centerline of road. There appears to be a band in the road at this point, and could not justify a straight line between section corners.

SEAL:



DATA SHOWN HERE ON
CERTIFIED CORRECT:

Anthony B. Kiedrowski
Registered Land Surveyor

DATE: 8/25/80

TIE SKETCH

Show at least four ties, also fence lines, roads, topo, size and type of witness trees and if off road - best way to arrive at corner.

