

01  
SECTION

18  
TOWN

05  
RANGE

# ADAMS COUNTY

COUNTY CORNER NO: 33

ROMPORTOL ID: 41805010000

## PUBLIC LAND SURVEY MONUMENT RECORD

TYPE OF MONUMENT: HARRISON  
ADAMS COUNTY COORDINATES, NAD 83 (2007)

N. 250549.376

E. 525633.798

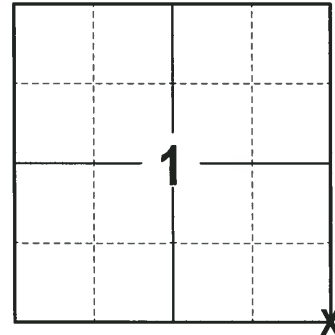
ELEVATION-      DATUM     

FIELD WORK DATE: 01/05/2018

### BASIS FOR MONUMENT LOCATION

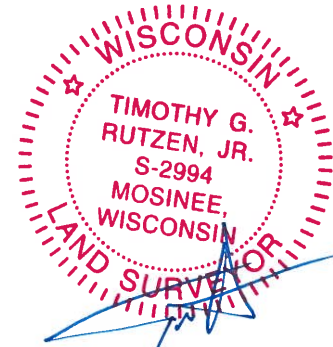
1981 - PLS 878 COULD NOT FIND ANY EVIDENCE OF THE CORNER MONUMENT, ORIGINAL OR SUBSEQUENT BEARING TREES. THIS CORNER WAS SET AT A DISTANCE-DISTANCE INTERSECTION FROM THE S1/4 CORNER OF SECTION 1 AND THE W1/4 CORNER OF SECTION 7. THE DISTANCES USED WERE EQUAL TO THE SOUTH LINE OF THE SW 1/4 SECTION OF 1-18-5 AND THE WEST LINE OF THE SW1/4 OF SECTION 7-18-6. COULD NOT USE A STRAIGHT LINE SINGLE PROPORTION PROCEDURE, AS THIS WOULD HAVE BEEN WEST OF THE LOOP IN THE CREEK. THE CORNER AS NOW SET MOST NEARLY MATCHES THE ORIGINAL NOTES, TAKING INTO ACCOUNT APPARENT EROSION OF THE STREAM BANKS. A LINE FROM HERE STRAIGHT TO THE NE CORNER OF SECTION 1 CLOSELY FOLLOWS AN OLD DOWN FENCE ALL THE WAY. AN OLD PLAT TIED TO THIS CORNER IS NOW MOSTLY UNDER WATER. SET A HARRISON MONUMENT AT THE CALCULATED LOCATION AND TIED OUT.

2017 - PLS 2994 FOUND A HARRISON MONUMENT 8" ABOVE THE GROUND SURFACE AND 1 M.C. MONUMENT. THE MONUMENT AGREES WITH THE EXISTING M.C. MONUMENT. ACCEPTED THE HARRISON MONUMENT AS THE CORNER LOCATION. SET 4 NEW TIES AND MEASURED TO THE TIES AND M.C. MONUMENT.



LOCATION  
(INDICATE CORNER BY "X")

SEAL:



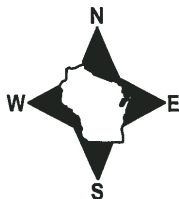
DATA SHOWN HERE ON THIS TIE SHEET IS CORRECT AND COMPLETE TO THE BEST OF MY KNOWLEDGE AND BELIEF.

PROFESSIONAL LAND SURVEYOR

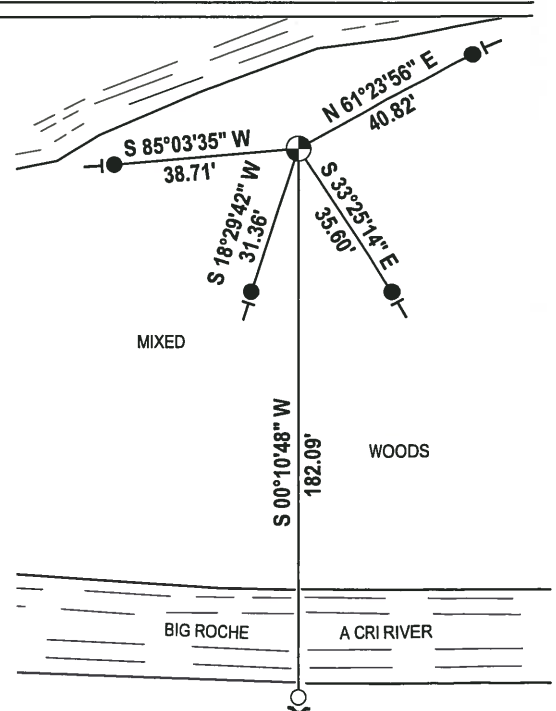
DATE 2-2-18

### - TIE SKETCH

NOTE: THE CORNER FALLS 15± SOUTH OF THE EDGE OF THE BIG ROCHE A CRI RIVER.



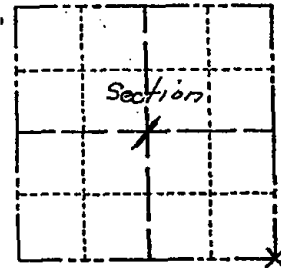
- 3/4" x 18" IRON REBAR SET, 1.50#/FT
- 1" O.D. IRON PIPE W/ALUMINUM CAP FOUND
- ⊕ HARRISON FOUND
- ↘ STEEL FENCE POST
- └ VINYL "T" POST



# Government Land Corner Certificate

ADAMS County  
 TYPE OF MONUMENT: Harrison Monument  
 STATE PLANE COORDINATES: N \_\_\_\_\_  
 E \_\_\_\_\_  
 ELEVATION — M.S.L. DATUM: \_\_\_\_\_  
 THETA ANGLE: \_\_\_\_\_  
 FIELD BOOK: 78 PAGE 127  
 DRAWN BY: L.W. Scott

CORNER NO. 33  
 SECTION 1  
 TOWN 18  
 RANGE 5



LOCATION  
(Indicated by 'X')

SEAL:



DATA SHOWN HERE ON  
CERTIFIED CORRECT:

*Anthony B. Kiedrowski*  
Registered Land Surveyor

DATE: Feb. 27, 1981

## BASIS FOR MONUMENT LOCATION

Show info such as: History of corner, with reference to Vol. and pg., dates, surveyor; exact description of monument replaced; if location computed, by taped or EDM traverse; landowner remarks, etc. (Use reverse side if necessary)

Could not find any evidence of corner monument or original or subsequent BT's. This corner set at a distance-distance intersection from the S 1/4 corner of Sec 1 and the W 1/4 corner of Sec 7. The distances used were equal to the south line of the SW 1/4 Sec 1-18-5 and the west line of the SW 1/4 of Sec 7-18-6. Could not use a straight line single proportion procedure, as this would have been west of the loop in the creek. The corner as now set most nearly matches the original notes, taking into account apparent erosion of the stream banks.

A line from here straight to the NE corner of Sec 1 closely follows an old down fence all the way.

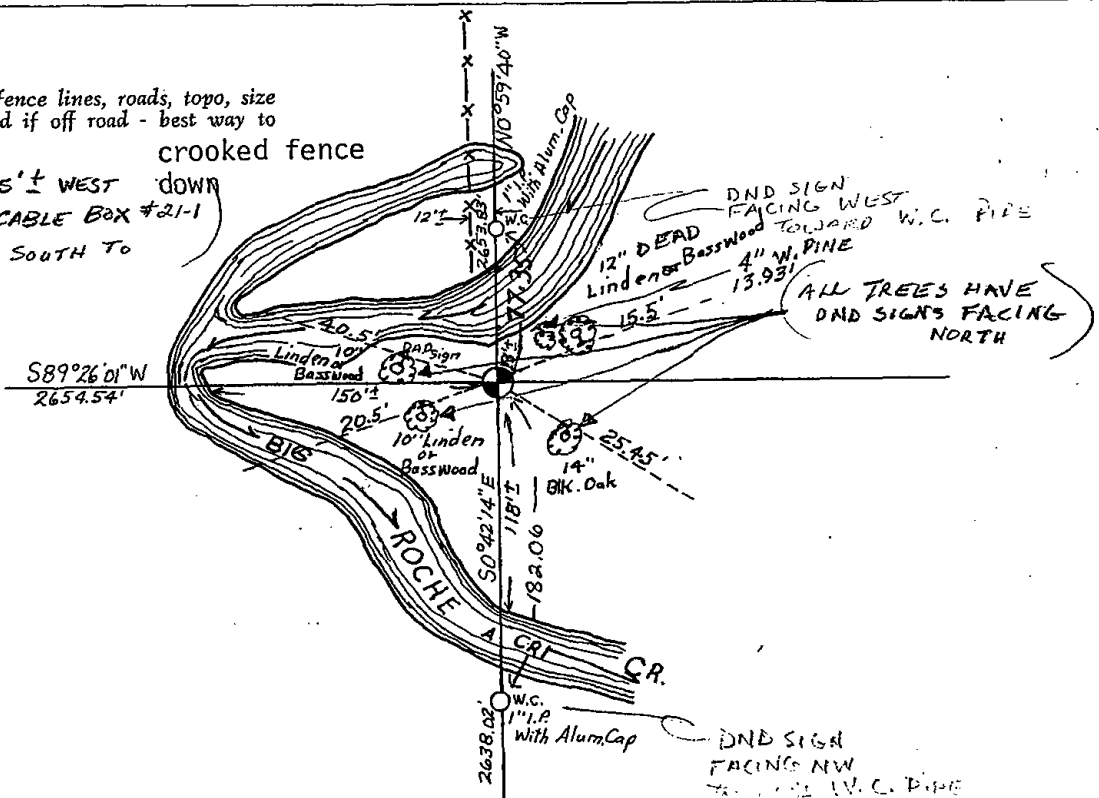
An old plat tied to this corner is now mostly under water.

## TIE SKETCH

Show at least four ties, also fence lines, roads, topo, size and type of witness trees' and if off road - best way to arrive at corner.

LUTTONVILLE AVE  
 ENTER OFF ROAD, 75'± WEST down  
 OF UNDERGROUND TELE CABLE BOX #21-1  
 SOUTH SIDE OF ROAD, SOUTH TO  
 CREEK

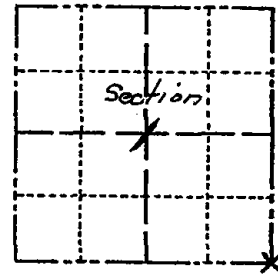
14 FEB 04 - TIES / MON *AK*  
SH-MC



# Government Land Corner Certificate

ADAMS County  
 TYPE OF MONUMENT: Harrison Monument  
 STATE PLANE COORDINATES: N \_\_\_\_\_  
 E \_\_\_\_\_  
 ELEVATION — M.S.L. DATUM: \_\_\_\_\_  
 THETA ANGLE: \_\_\_\_\_  
 FIELD BOOK: 78 PAGE 127  
 DRAWN BY: L.W. Scott

CORNER NO. 33  
 SECTION 1  
 TOWN 18  
 RANGE 5



LOCATION  
(Indicated by 'X')

## BASIS FOR MONUMENT LOCATION

Show info such as: History of corner, with reference to Vol. and pg., dates, surveyor; exact description of monument replaced; if location computed, by taped or EDM traverse; landowner remarks, etc. (Use reverse side if necessary)

Could not find any evidence of corner monument or original or subsequent BT's. This corner set at a distance-distance intersection from the S 1/4 corner of Sec 1 and the W 1/4 corner of Sec 7. The distances used were equal to the south line of the SW 1/4 Sec 1-18-5 and the west line of the SW 1/4 of Sec 7-18-6. Could not use a straight line single proportion procedure, as this would have been west of the loop in the creek. The corner as now set most nearly matches the original notes, taking into account apparent erosion of the stream banks.

A line from here straight to the NE corner of Sec 1 closely follows an old down fence all the way.

An old plat tied to this corner is now mostly under water.

SEAL:



DATA SHOWN HERE ON  
CERTIFIED CORRECT:

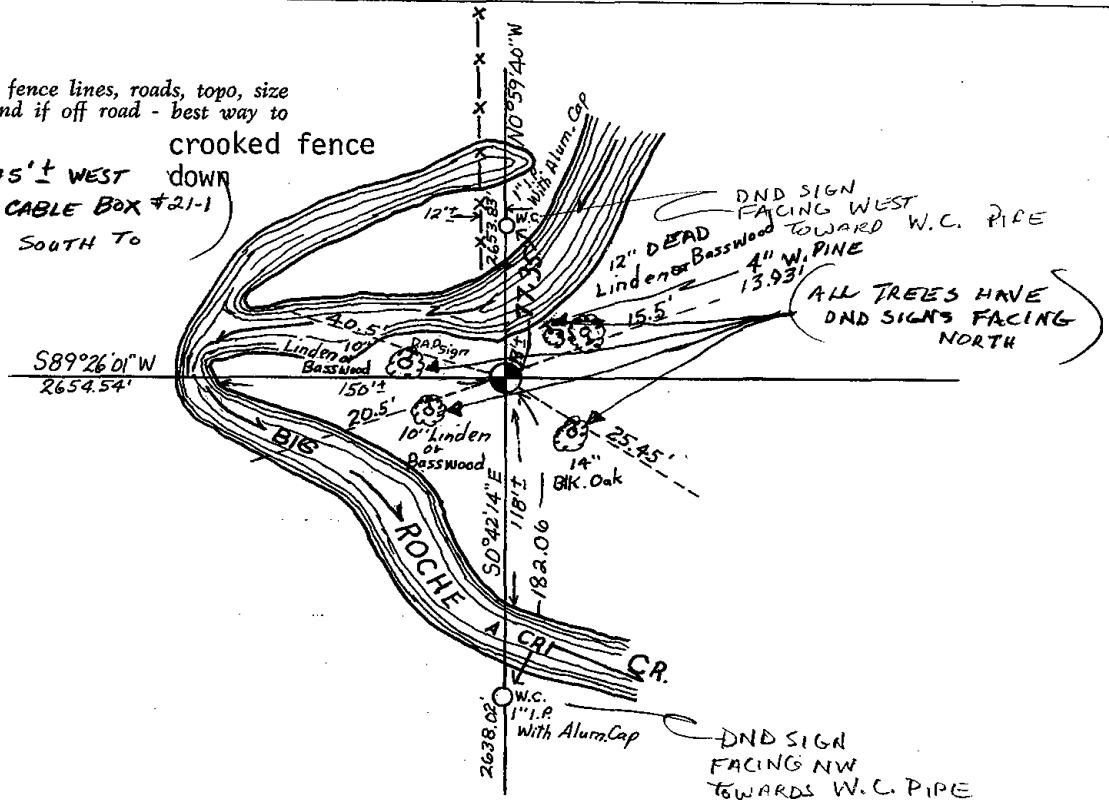
*Anthony B. Kiedrowski*  
Registered Land Surveyor

DATE: Feb. 27, 1981

## TIE SKETCH

Show at least four ties, also fence lines, roads, topo, size and type of witness trees' and if off road - best way to arrive at corner.

LOTTONVILLE AVE  
 ENTER OFF ROAD, 75'± WEST DOWN  
 OF UNDERGROUND TELE CABLE BOX #21-1  
 SOUTH SIDE OF ROAD, SOUTH TO  
 CREEK



### MAINTENANCE RECORD

DATE	BY WHOM	REMARKS
2-28-83	GR-SS	OK
9-2-92	JG	OK
2-17-98	JG-SS	ALL OK
5-1-03	JG	1-NEW, (4 NEW DND SIGNS)
2-14-04	SH-MC	MON. & TIES OK
12-13-07	JG	ALL OK