

07 SECTION 18 TOWN 05 RANGE

ADAMS COUNTY

COUNTY CORNER NO.: 35
 ROMPORTOL ID: 41805072000

PUBLIC LAND SURVEY MONUMENT RECORD

TYPE OF MONUMENT: HARRISON (BROKEN-TOP)
 ADAMS COUNTY COORDINATES, NAD 83 (2007)

N. 247852.734

E. 499263.839

ELEVATION- _____ DATUM _____

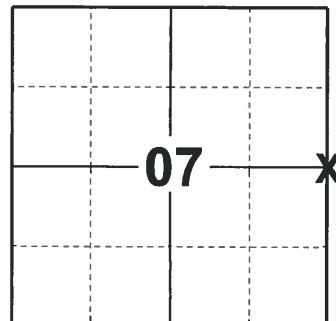
FIELD WORK DATE: 10/22/2018

BASIS FOR MONUMENT LOCATION

1982 - PLS 878 ORIGINAL BEARING TREE STILL STANDING. (7" BURR OAK S 84 E 103 LKS) MEASURED OVER AND DUG WITH A BACKHOE. FOUND THE REMAINS OF THE BOTTOM 12" OF A POST STILL IN PLACE. SET A HARRISON MONUMENT AT THAT POINT AND TIED OUT.

2010 - PLS 1473 FOUND A HARRISON MONUMENT 1.7' UNDER THE SURFACE. SET A 5" GALVANIZED LANDSCAPING SPIKE OVER THE MONUMENT AND TIED OUT.

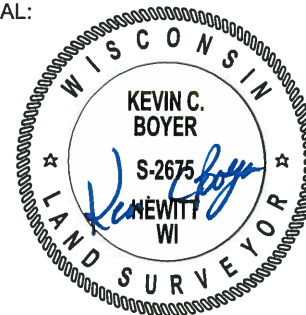
2018 - PLS 2675 FOUND A 5" SPIKE IN THE ROAD SURFACE, 4 TIES AND 1 WITNESS TREE. REMOVED THE 5" SPIKE AND FOUND A HARRISON MONUMENT WITH A BROKEN-TOP 18" BELOW THE ROAD SURFACE. THE MONUMENT AGREES WITH THE EXISTING TIES AND WITNESS TREE. ACCEPTED THE HARRISON MONUMENT WITH A BROKEN-TOP AS THE CORNER LOCATION AND RE-MEASURED TO THE EXISTING TIES AND WITNESS TREE.



LOCATION

(INDICATE CORNER BY "X")

SEAL:



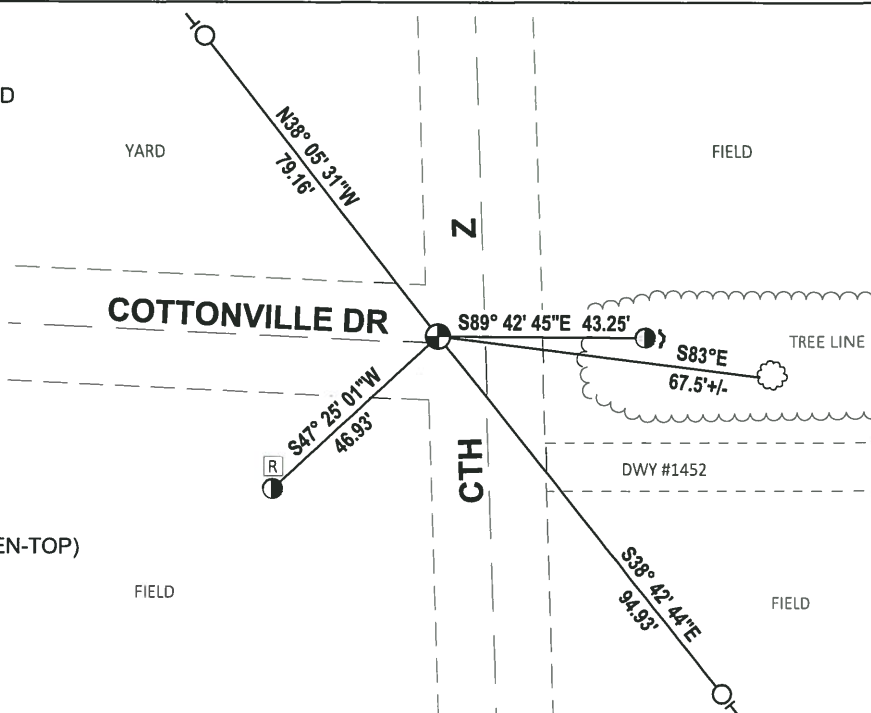
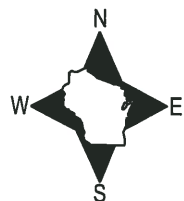
DATA SHOWN HERE ON THIS TIE SHEET IS CORRECT AND COMPLETE TO THE BEST OF MY KNOWLEDGE AND BELIEF.

PROFESSIONAL LAND SURVEYOR

DATE 12/4/2018

- TIE SKETCH

NOTE: THE CORNER FALLS 1'± NORTH OF THE CENTERLINE OF COTTONVILLE DR AND 10'± WEST OF THE CENTERLINE OF CTH Z.



- FOUND 3/4" IRON ROD
- FOUND 5/4" IRON ROD
- ⊕ FOUND HARRISON MONUMENT (BROKEN-TOP)
- Ⓜ RIGHT-OF-WAY GUARD POST
- ┌ STEEL FENCE POST
- └ VINYL "T" POST
- ☼ WITNESS TREE

U.S PUBLIC LAND SURVEY MONUMENT RECORD ADAMS COUNTY, WISCONSIN

CORNER NO. 35
SECTION 7
TOWN 18 N
RANGE 5 E

TYPE OF MONUMENT: 5" GALVANIZED LANDSCAPING SPIKE OVER HARRISON MON.

ADAMS COUNTY COORDINATES:

NORTH: 247852.69'

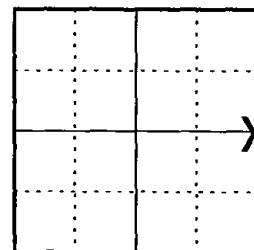
EAST: 499263.86'

ELEVATION _ MSL DATUM: NOT APPLICABLE

THETA ANGLE: NOT APPLICABLE

FIELD BOOK:

DRAWN BY: DANIEL MARKS



LOCATION

BASIS FOR MONUMENT LOCATION

On February 16, 1982 Anthony B. Kiedrowski found a 42" original burr oak bearing tree still standing. He measured off the tree record distance and dug with a back hoe finding the remains of fence post still in place. He replaced the old post with a Harrison monument. Corner was buried 1.7' under the surface so I set a 5" galvanized landscaping spike over the top of the monument.



SEAL



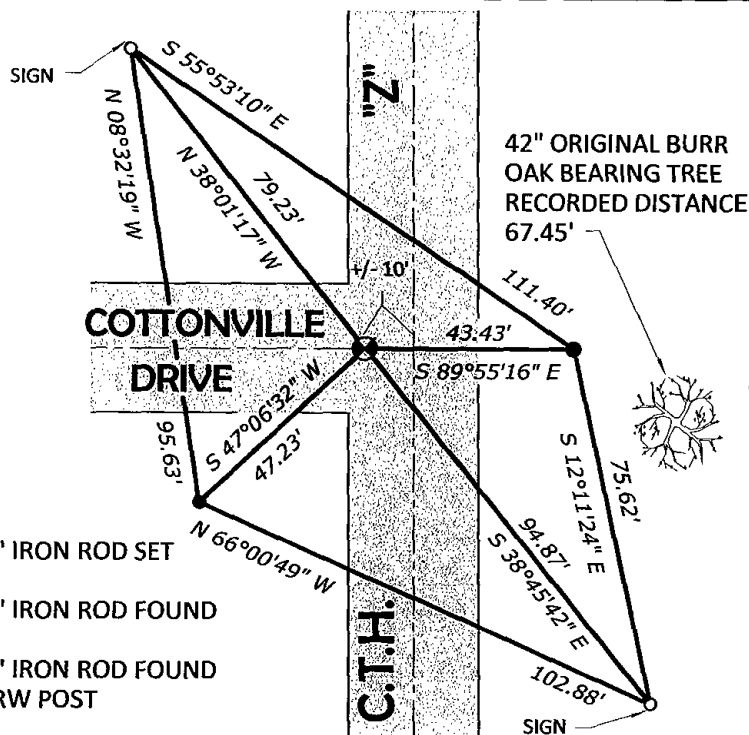
DATA SHOWN HEREON CERTIFIED CORRECT:

Richard W. Marks

REGISTERED LAND SURVEYOR

DATE: August 1, 2010

TIE SKETCH: No Scale



MAINTENANCE RECORD

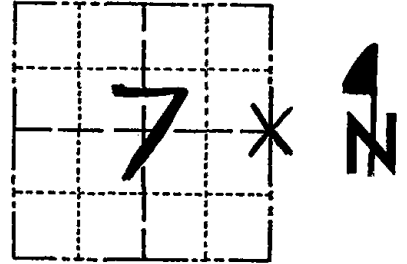
DATE	INIT.	REMARKS

- 3/4" IRON ROD SET
- 3/4" IRON ROD FOUND
- 5/8" IRON ROD FOUND AT RW POST

Government Land Corner Certificate

Adams County
 TYPE OF MONUMENT: Harrison
 STATE PLANE COORDINATES: N _____
 E _____
 ELEVATION — M.S.L. DATUM: _____
 THETA ANGLE: _____
 FIELD BOOK: 102 PAGE _____
 DRAWN BY: T. Helgren

CORNER NO. 35
 SECTION 7
 TOWN 18
 RANGE 5



LOCATION
(Indicated by 'X')

BASIS FOR MONUMENT LOCATION

Show info such as: History of corner, with reference to Vol. and pg., dates, surveyor; exact description of monument replaced; if location computed, by taped or EDM traverse; landowner remarks, etc. (Use reverse side if necessary)

Original bearing tree still standing.
 (7" burr oak S 84 E 103.1ks) Measured over
 and dug with backhoe. Found remains of bottom
 12" of post still in place. Set harrison monument
 at that point.

SEAL:



DATA SHOWN HERE ON
 CERTIFIED CORRECT:

Anthony B. Kiedrowski
 Registered Land Surveyor

DATE: 2-16-82

TIE SKETCH

Show at least four ties, also fence lines, roads, topo, size and type of witness trees' and if off road - best way to arrive at corner.

All ties are
 to Nail & Copper
 disc

