

09 SECTION 18 TOWN 05 RANGE

ADAMS COUNTY

COUNTY CORNER NO: 37
 ROMPORTOL ID: 41805092000

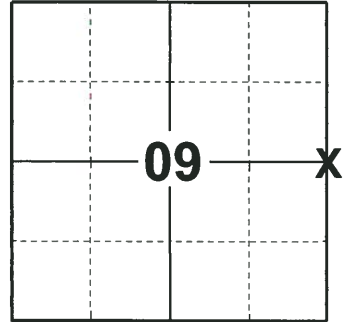
PUBLIC LAND SURVEY MONUMENT RECORD

TYPE OF MONUMENT: HARRISON
 ADAMS COUNTY COORDINATES, NAD 83 (2007)

N. 247858.247
 E. 509800.642

ELEVATION- _____ DATUM _____

FIELD WORK DATE: 10/18/2018



LOCATION
 (INDICATE CORNER BY "X")

BASIS FOR MONUMENT LOCATION

1974 - PLS 1103 EXCAVATION WITH A BACK-HOE YIELDED NO EVIDENCE OF THE CORNER OR ANY SUBSEQUENT REMONUMENTATION OF THE CORNER. SET A HARRISON MONUMENT EQUIDISTANT AND ON LINE BETWEEN THE NORTHEAST AND SOUTHEAST SECTION CORNERS AND TIED OUT ON AUGUST 23, 1974.

2018 - PLS 2675 FOUND A HARRISON MONUMENT FLUSH WITH THE GROUND SURFACE AND 2 WITNESSES. THE MONUMENT AGREES WITH THE EXISTING WITNESSES. ACCEPTED THE HARRISON MONUMENT AS THE CORNER LOCATION. SET 4 NEW TIES AND MEASURED TO THE TIES AND WITNESSES.

SEAL:



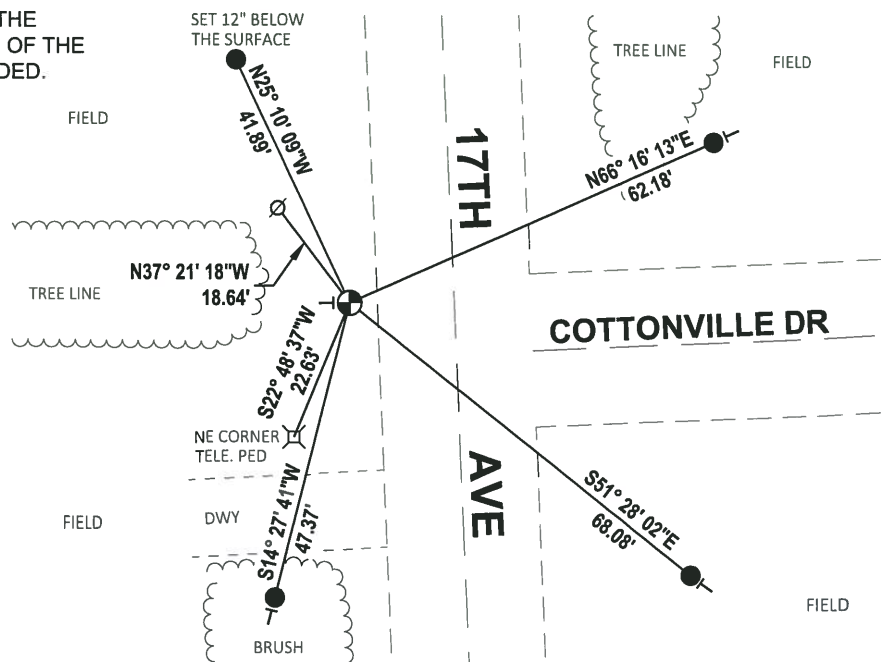
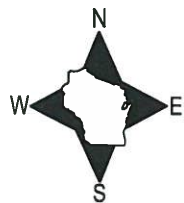
DATA SHOWN HERE ON THIS TIE SHEET IS CORRECT AND COMPLETE TO THE BEST OF MY KNOWLEDGE AND BELIEF.

PROFESSIONAL LAND SURVEYOR

DATE 12/4/2018

- TIE SKETCH

NOTE: THE CORNER FALLS 16'± WEST OF THE CENTERLINE OF 17TH AVE AND 9'± NORTH OF THE CENTERLINE OF COTTONVILLE DR EXTENDED.



- SET 3/4" x 18" IRON REBAR, 1.50#/FT
- ⊕ FOUND HARRISON MONUMENT
- ⊘ WITNESS POWER POLE
- VINYL "T" POST

ADAMS COUNTY

Survey Monument Record

TYPE OF MONUMENT: Harrison Monument

STATE PLANE COORDINATES: N _____

E _____

ELEVATION — M.S.L. DATUM: _____

THETA ANGLE: _____

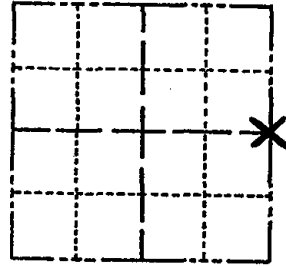
FIELD BOOK: _____ PAGE _____

CORNER NO. 542

SECTION 9

TOWN 18

RANGE 5



LOCATION (Indicated by 'X')

SEAL:

BASIS FOR MONUMENT LOCATION

(Use reverse side if necessary)

Show info such as: History of corner, with reference to Vol. and pg, dates, surveyor; exact description of monument replaced; if location computed, by taped or EDM traverse; landowner remarks, etc.



Excavation with back-hoe yielded no evidence of the corner or any subsequent remonumentation of the corner.

Set Harrison Monument equidistant and on line between Northeast and Southeast section corners on August 23, 1974.

OK - 7-28-78 RK-SS
OK - 3-1-83 GR-SS

2-NEW TIES, 1-GONE, MON OK - JG-135, 8-21-92
OK, 2-9-98 - JG
1-GONE, 2-5-03 - JG
OK, 12-18-07 - JG

CERTIFIED CORRECT:

Dale C. Hagen
Registered Land Surveyor

DATE: Sept. 16, 1974

TIE SKETCH

(Show at least four ties)

