

10
SECTION 18
TOWN 05
RANGE

ADAMS COUNTY

COUNTY CORNER NO: 48
ROMPORTOL ID: 41805100020

PUBLIC LAND SURVEY MONUMENT RECORD

TYPE OF MONUMENT: HARRISON
ADAMS COUNTY COORDINATES, NAD 83 (2007)

N. 245221.409

E. 512528.780

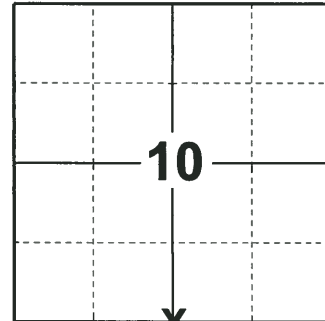
ELEVATION- _____ DATUM _____

FIELD WORK DATE: 10/18/2018

BASIS FOR MONUMENT LOCATION

1974 - PLS 1103 RAN TRAVERSE OF ENTIRE SECTION 15 AND TIED IT TO ALL EXISTING SUBDIVISIONS WITHIN SECTION. FOUND NO EVIDENCE AS TO THE LOCATION OF THE ORIGINAL CORNER OR ANY OF ITS ACCESSORIES. SET A HARRISON MONUMENT AT THE CORNER LOCATION AND TIED OUT. THE CORNER FALLS EQUIDISTANT AND ON LINE BETWEEN THE NORTHEAST AND NORTHWEST SECTION CORNERS.

2018 - PLS 2675 FOUND A HARRISON MONUMENT 6" BELOW THE ROAD SURFACE AND 1 WITNESS. THE MONUMENT AGREES WITH THE EXISTING WITNESS. ACCEPTED THE HARRISON MONUMENT AS THE CORNER LOCATION. SET 4 NEW TIES AND MEASURED TO THE TIES AND WITNESS.



LOCATION

(INDICATE CORNER BY "X")

SEAL:



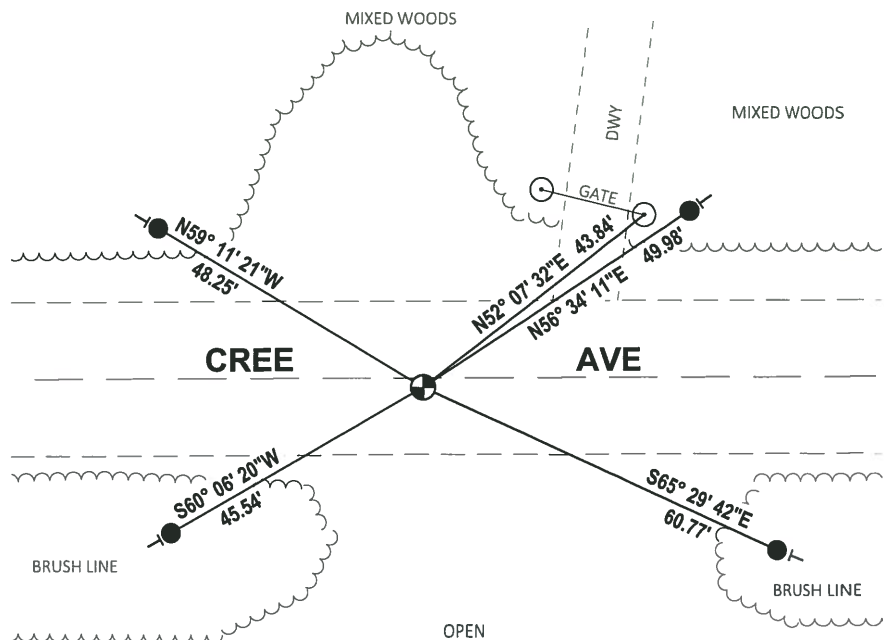
DATA SHOWN HERE ON THIS TIE SHEET IS CORRECT AND COMPLETE TO THE BEST OF MY KNOWLEDGE AND BELIEF.

PROFESSIONAL LAND SURVEYOR

DATE 12/4/2018

- TIE SKETCH

NOTE: THE CORNER FALLS 1'± SOUTH OF THE CENTERLINE OF CREE AVE.



- SET 3/4" x 18" IRON REBAR, 1.50#/FT
- ⊕ FOUND HARRISON MONUMENT
- WITNESS 4" WOOD POST
- ← VINYL "T" POST

ADAMS COUNTY

Survey Monument Record

TYPE OF MONUMENT: Harrison Monument

STATE PLANE COORDINATES: N _____

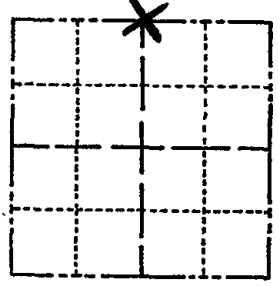
E _____

ELEVATION — M.S.L. DATUM: _____

THETA ANGLE: _____

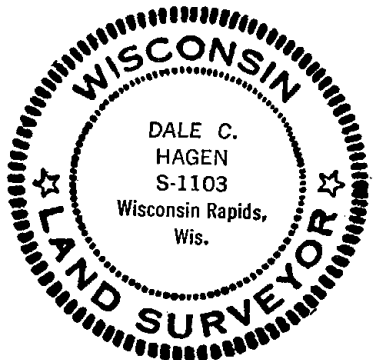
FIELD BOOK: _____ PAGE _____

CORNER NO. 430
 SECTION 15
 TOWN 18
 RANGE 5



LOCATION (Indicated by 'X')

SEAL:



BASIS FOR MONUMENT LOCATION

(Use reverse side if necessary)

Show info such as: History of corner, with reference to Vol. and pg, dates, surveyor; exact description of monument replaced; if location computed, by taped or EDM traverse; landowner remarks, etc.

Ran traverse of entire Section 15 and tied in to all existing subdivisions within section. Could find no evidence of the original corner or any of its accessories.

Monumented corner accordingly. Corner falls equidistant and on line between Northeast and Northwest Section corners.

- OK 7-8-78 RK-SS
- OK 3-1-83 GR-SS
- 1-TIE GONE, MON. OK, 8-21-92 JG-BSS
- 2-NEW, 1-GONE 2-5-98-JG
- OK 5-1-03-JG
- OK, 12-13-07-JG

CERTIFIED CORRECT:

Dale C. Hagen
Registered Land Surveyor

DATE: July 30, 1974

TIE SKETCH

(Show at least four ties)

NOTE:

Ties in trees to nail in disc. Those indicated by "BT" 20" RED OAK/BT have letters BT scribed in face. (STUMP NAIL STILL GOOD) 54.25'

