

18  
SECTION

18  
TOWN

05  
RANGE

# ADAMS COUNTY

COUNTY CORNER NO: 63

ROMPORTOL ID: 4180518000

## PUBLIC LAND SURVEY MONUMENT RECORD

TYPE OF MONUMENT: HARRISON  
ADAMS COUNTY COORDINATES, NAD 83 (2007)

N. 239935.051

E. 499304.836

ELEVATION-          DATUM         

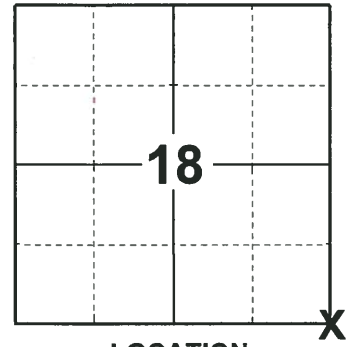
FIELD WORK DATE: 08/25/2018

### BASIS FOR MONUMENT LOCATION

1974 - PLS 878 EXCAVATED WITH A BACKHOE AND FOUND THE TOP OF A 4" x 24" POST LYING ON ITS SIDE. FOUND THE BOTTOM 12" UPRIGHT. REPLACED THE POST WITH A HARRISON AND TIED OUT. THIS POINT MATCHES FORTY LINE FENCES TO THE WEST VERY WELL. POST CALLED FOR IN THE OLD COUNTY SURVEYOR RECORDS.

1982 - PLS (UNKNOWN) SET HARRISON MONUMENT PREVIOUS ONE WAS TAKEN OUT BY CONSTRUCTION.

2018 - PLS 2675 FOUND A HARRISON MONUMENT 4" BELOW THE ROAD SURFACE, 4 RIGHT OF WAY IRONS AND 1 WITNESS. THE MONUMENT AGREES WITH THE EXISTING WITNESS. ACCEPTED THE HARRISON MONUMENT AS THE CORNER LOCATION. MEASURED TO THE 4 RIGHT OF WAY IRONS AND WITNESS.



LOCATION  
(INDICATE CORNER BY "X")

SEAL:



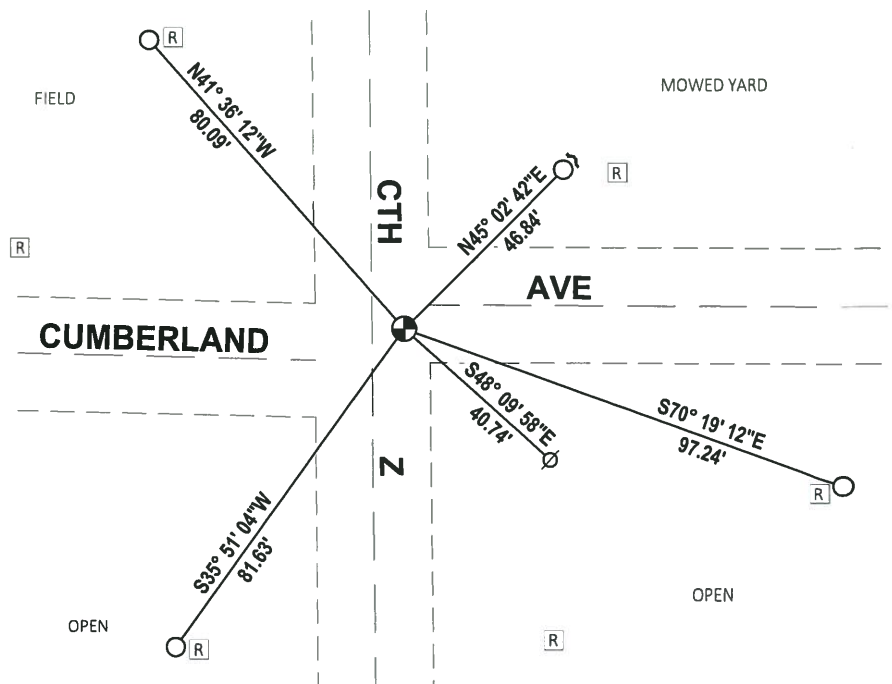
DATA SHOWN HERE ON THIS TIE SHEET IS CORRECT AND COMPLETE TO THE BEST OF MY KNOWLEDGE AND BELIEF.

PROFESSIONAL LAND SURVEYOR

DATE 12/4/2018

### TIE SKETCH

NOTE: THE CORNER FALLS 7'± EAST OF THE CENTERLINE OF CTH Z.



- FOUND 3/4" IRON ROD
- ⊕ FOUND HARRISON MONUMENT
- Ø WITNESS POWER POLE
- ~ STEEL FENCE POST
- Ⓜ RIGHT-OF-WAY GUARD POST

ADAMS COUNTY

Survey Monument Record

TYPE OF MONUMENT: Harrison Standard

STATE PLANE COORDINATES: N \_\_\_\_\_

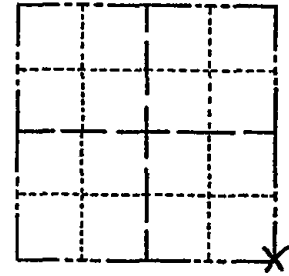
E \_\_\_\_\_

ELEVATION -- M.S.L. DATUM: \_\_\_\_\_

THETA ANGLE: \_\_\_\_\_

FIELD BOOK: \_\_\_\_\_ PAGE \_\_\_\_\_

CORNER NO. 436  
SECTION 18  
TOWN 18  
RANGE 5



LOCATION  
(Indicated by 'X')

BASIS FOR MONUMENT LOCATION

(Use reverse side if necessary)

Show info such as: History of corner, with reference to Vol. and pg, dates, surveyor; exact description of monument replaced; if location computed, by taped or EDM traverse; landowner remarks, etc.

SEAL:



Excavated with backhoe. Found top of 4" x 24" post lying on its side. Found bottom 12" upright. Replaced post with Harrison. This point matches forty line fences to the West very well. Post called for in old county surveyor records. See picture.

- OK 3-1-83 GR-55
- OK 8-21-92-JG-B5
- OK 2-5-98-JG
- OK 2-5-03-JG
- OK 12-13-07-JG

CERTIFIED CORRECT:

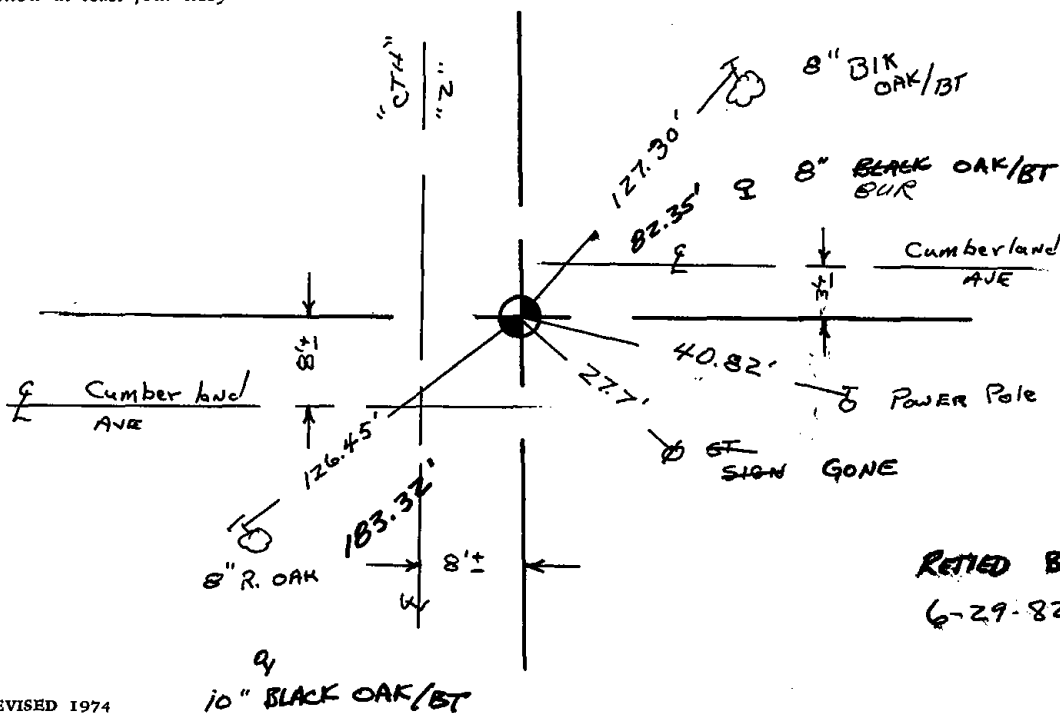
*Anthony B. Kiedrowski*  
Registered Land Surveyor

DATE: July 30, 1974

TIE SKETCH

All ties to nail and disc.

(Show at least four ties)



RETIED BY KIEDROWSKI ENG.  
6-29-82

ADAMS COUNTY

Survey Monument Record

TYPE OF MONUMENT: Harrison Standard

STATE PLANE COORDINATES: N \_\_\_\_\_

E \_\_\_\_\_

ELEVATION — M.S.L. DATUM: \_\_\_\_\_

THETA ANGLE: \_\_\_\_\_

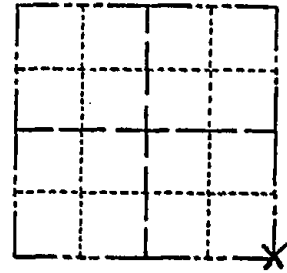
FIELD BOOK: \_\_\_\_\_ PAGE \_\_\_\_\_

CORNER NO. 436

SECTION 18

TOWN 18

RANGE 5



BASIS FOR MONUMENT LOCATION

(Use reverse side if necessary)

Show info such as: History of corner, with reference to Vol. and pg, dates, surveyor; exact description of monument replaced; if location computed, by taped or EDM traverse; landowner remarks, etc.

Excavated with backhoe. Found top of 4" x 24" post lying on its side. Found bottom 12" upright. Replaced post with Harrison. This point matches forty line fences to the West very well. Post called for in old county surveyor records. See picture.

SEAL:



CERTIFIED CORRECT:

Anthony B. Kiedrowski  
Registered Land Surveyor

DATE: July 30, 1974

*Cray: Harrison Mon.  
installed 6-29-82 by  
H E J Prunovos owl  
taken out by construction*

TIE SKETCH

All ties to nail and disc.

(Show at least four ties)

