

16 SECTION 18 TOWN 05 RANGE

ADAMS COUNTY

COUNTY CORNER NO: 67
 ROMPORTOL ID: 4180516000

PUBLIC LAND SURVEY MONUMENT RECORD

TYPE OF MONUMENT: HARRISON
 ADAMS COUNTY COORDINATES, NAD 83 (2007)

N. 239942.906

E. 509869.669

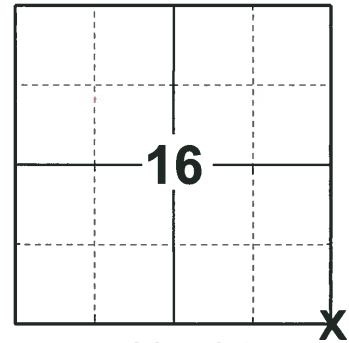
ELEVATION- _____ DATUM _____

FIELD WORK DATE: 10/24/2018

BASIS FOR MONUMENT LOCATION

1971 - PLS 981 FOUND A CONCRETE MONUMENT, REPLACED IT WITH A 30" STANDARD HARRISON MONUMENT AND TIED OUT.

2018 - PLS 2675 FOUND A HARRISON MONUMENT FLUSH WITH THE GROUND SURFACE AND 1 WITNESS. THE MONUMENT AGREES WITH THE EXISTING WITNESS. ACCEPTED THE HARRISON MONUMENT AS THE CORNER LOCATION. SET 4 NEW TIES AND MEASURED TO THE TIES AND WITNESS.



LOCATION

(INDICATE CORNER BY "X")

SEAL:



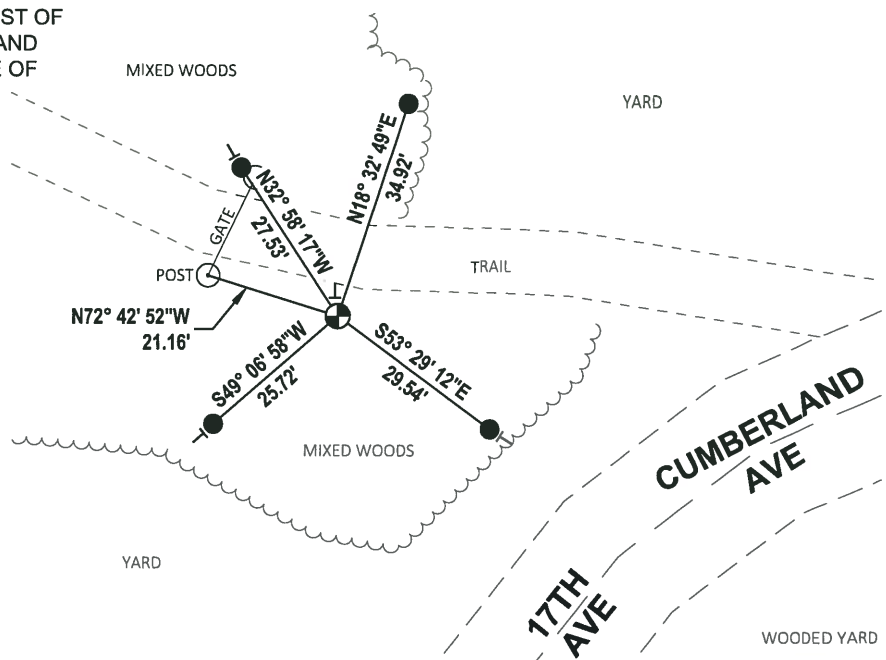
DATA SHOWN HERE ON THIS TIE SHEET IS CORRECT AND COMPLETE TO THE BEST OF MY KNOWLEDGE AND BELIEF.

PROFESSIONAL LAND SURVEYOR

DATE 12/4/2018

TIE SKETCH

NOTE: THE CORNER FALLS 57'± NORTHWEST OF THE CENTERLINE OF 17TH AVE/CUMBERLAND AVE AND 10'± SOUTH OF THE CENTERLINE OF THE TRAIL.



- SET 3/4" x 18" IRON REBAR, 1.50#/FT
- ⊙ FOUND HARRISON MONUMENT
- VINYL "T" POST

ADAMS COUNTY

Survey Monument Record

CORNER NO. 11
SECTION 21
TOWN 18
RANGE 5

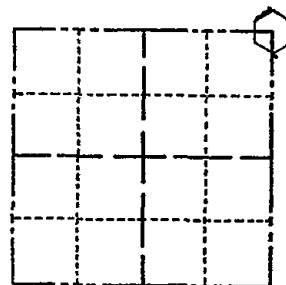
TYPE OF MONUMENT: 30" HARRISON

STATE PLANE COORDINATES: N
E

ELEVATION - M.S.L. DATUM:

THETA ANGLE:

FIELD BOOK: 104 PAGE 43



LOCATION (Indicated by 'X')

SEAL:

BASIS FOR MONUMENT LOCATION

(Use reverse side if necessary)

Show info such as: History of corner, with reference to Vol. and pg, dates, surveyor; exact description of monument replaced; if location computed, by taped or EDM traverse; landowner remarks, etc.

Found concrete monument and set 30" Harrison monument

July 25, 1971

Sam T. Mullen R.L.S. S-981

- OK 7-8-78 RK-SS
OK 3-1-83 GR-SS
OK 8-21-92 JG-BJ
3-GONE, 3-NEW 2-5-98-JG
2-GONE, 2-NEW, 1-30-03-JG
OK, 12-13-07-JG

CERTIFIED CORRECT:

Registered Land Surveyor

DATE:

TIE SKETCH

(Show at least four ties)

