

14  
SECTION

18  
TOWN

05  
RANGE

# ADAMS COUNTY

COUNTY CORNER NO: 70

ROMPORTOL ID: 41805140020

## PUBLIC LAND SURVEY MONUMENT RECORD

TYPE OF MONUMENT: HARRISON (BROKEN-TOP)  
ADAMS COUNTY COORDINATES, NAD 83 (2007)

N. 239948.950

E. 517752.925

ELEVATION- \_\_\_\_\_ DATUM \_\_\_\_\_

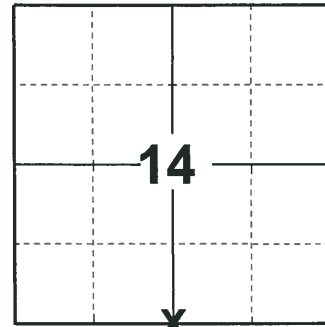
FIELD WORK DATE: 10/24/2018

### BASIS FOR MONUMENT LOCATION

1977 - PLS 922 RESEARCHED ADAMS COUNTY SURVEY RECORDS AND NO RESURVEYS WERE ON FILE PERTAINING TO THIS CORNER. RE-SET THE CORNER BY SINGLE PROPORTIONATE METHOD. THIS LOCATION FIT EDM TRAVERSE AND OCCUPATION OF THE SECTION WELL. ALSO FIT LOCATION AS SHOWN ON THE STATE HIGHWAY PLAT (PROJECT T05003). SET A HARRISON MONUMENT AT THE CALCULATED LOCATION AND TIED OUT.

1982 - WISDOT FOUND THE HARRISON MONUMENT AT THE CORNER LOCATION AND SET 4 BERNSTEN MONUMENTS.

2018 - PLS 2675 FOUND A HARRISON MONUMENT WITH A BROKEN-TOP 12" BELOW THE ROAD SURFACE AND 4 TIES. THE MONUMENT AGREES WITH THE EXISTING TIES. ACCEPTED THE HARRISON MONUMENT WITH A BROKEN-TOP AS THE CORNER LOCATION AND RE-MEASURED TO THE EXISTING TIES.



**LOCATION**

(INDICATE CORNER BY "X")

SEAL:



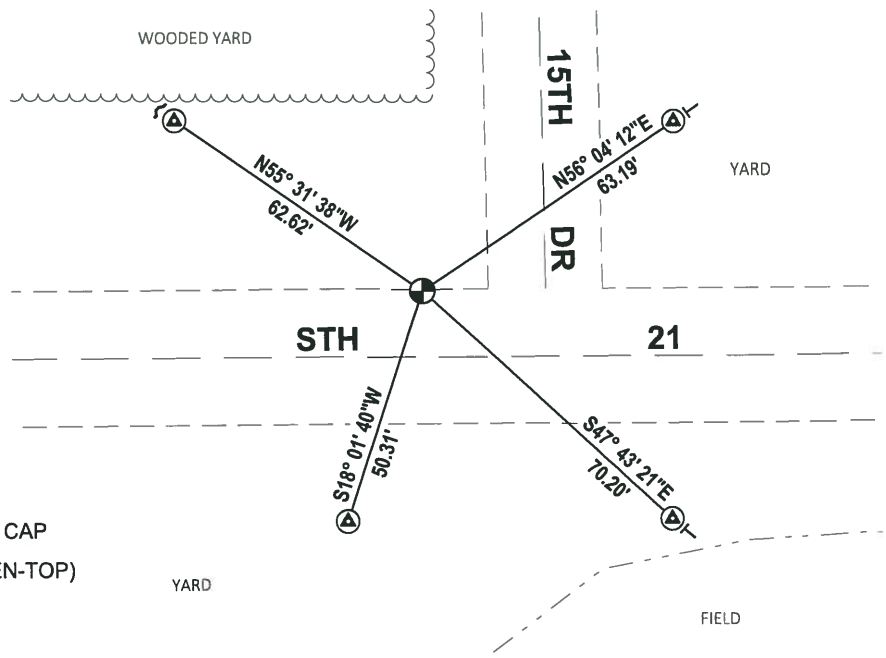
DATA SHOWN HERE ON THIS TIE SHEET IS CORRECT AND COMPLETE TO THE BEST OF MY KNOWLEDGE AND BELIEF.

PROFESSIONAL LAND SURVEYOR

DATE 12/4/2018

### - TIE SKETCH

NOTE: THE CORNER FALLS 1± SOUTH OF THE NORTH EDGE OF STH 21 AND 25± WEST OF THE CENTERLINE OF 15TH DR.



- ⊕ FOUND WISDOT ALUMINUM BERNSTEN CAP
- ⊕ FOUND HARRISON MONUMENT (BROKEN-TOP)
- ┌ STEEL FENCE POST
- └ VINYL "T" POST

ADAMS COUNTY

Survey Monument Record

TYPE OF MONUMENT: STANDARD 30" HARRISON

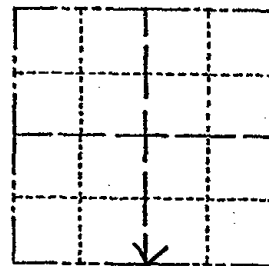
STATE PLANE COORDINATES: N \_\_\_\_\_ E \_\_\_\_\_

ELEVATION — M.S.L. DATUM: \_\_\_\_\_

THETA ANGLE: \_\_\_\_\_

FIELD BOOK: \_\_\_\_\_ PAGE \_\_\_\_\_

CORNER NO. 70  
SECTION 14  
TOWN 18N  
RANGE SE



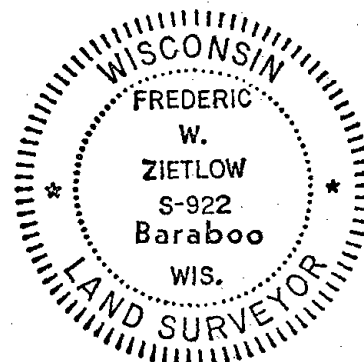
LOCATION (Indicated by 'X')

SEAL:

BASIS FOR MONUMENT LOCATION

(Use reverse side if necessary)

Show info such as: History of corner, with reference to Vol. and pg, dates, surveyor; exact description of monument replaced; if location computed, by taped or EDM traverse; landowner remarks, etc.



RESEARCHED ADAMS COUNTY SURVEY RECORDS AND NO RESURVEYS WERE ON FILE WHICH PERTAINED TO THIS CORNER. RE-SET THIS CORNER BY SINGLE PROPORTIONATE METHOD. FIT EDM. TRAVERSE AND OCCUPATION OF SECTION WELL. ALSO FIT LOCATION AS SHOWN ON STATE HIGHWAY PLAT (PROJECT TOS003)

Note by County Surveyor, A.B. Kiedrowski: This is an original BT by Leonard Hodges, Oct., 1851 (8" burr oak, N 3° E 31.02') Scars are still visible. Oak is now 34" in diameter. Corner as set fits original tie quite well.

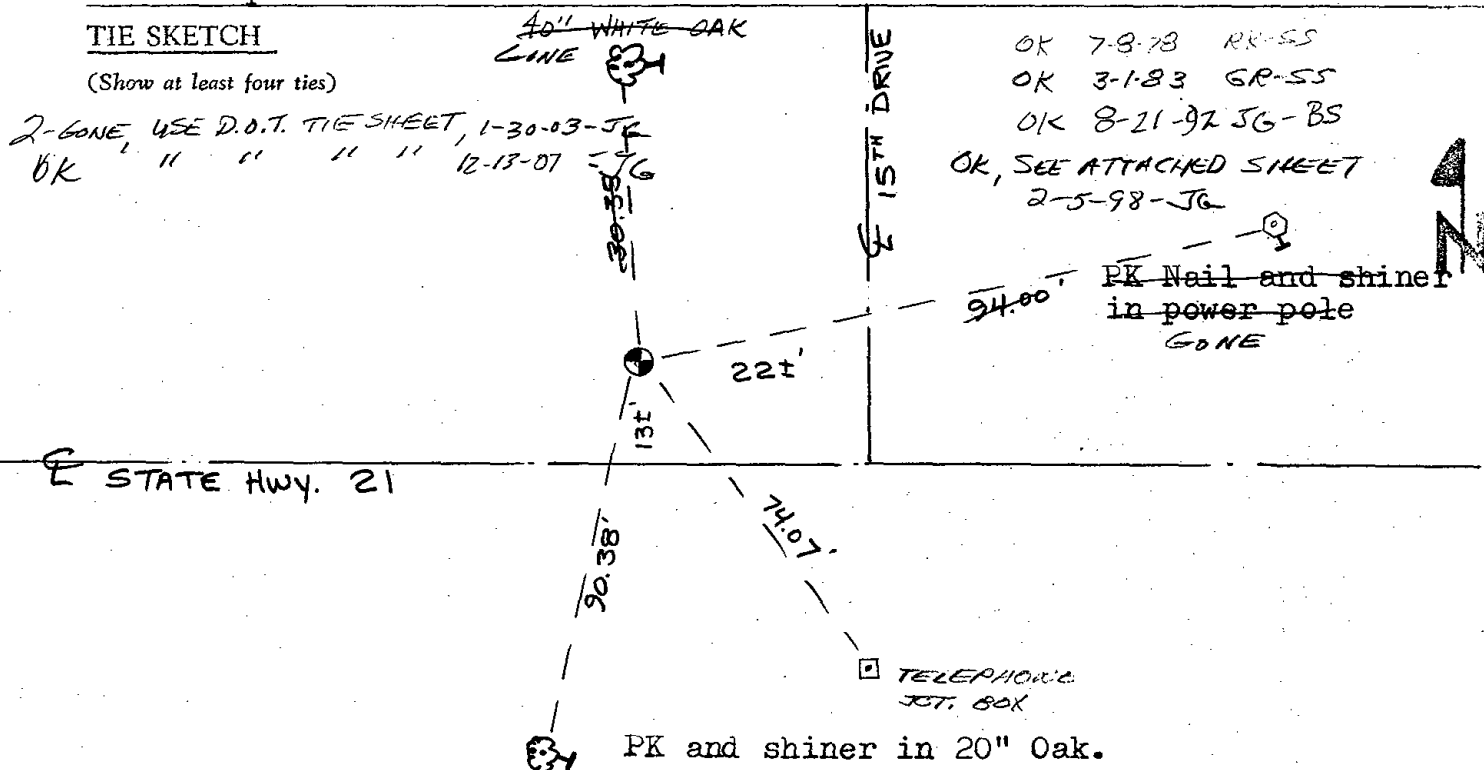
CERTIFIED CORRECT:

*Frederic W. Zietlow*  
Registered Land Surveyor

DATE: DECEMBER 20, 1977

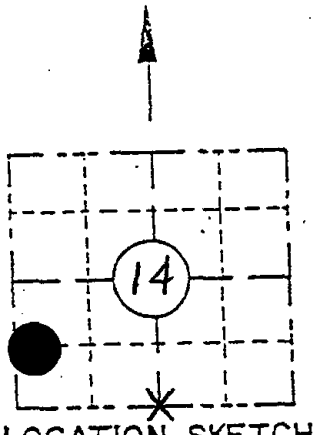
TIE SKETCH

(Show at least four ties)



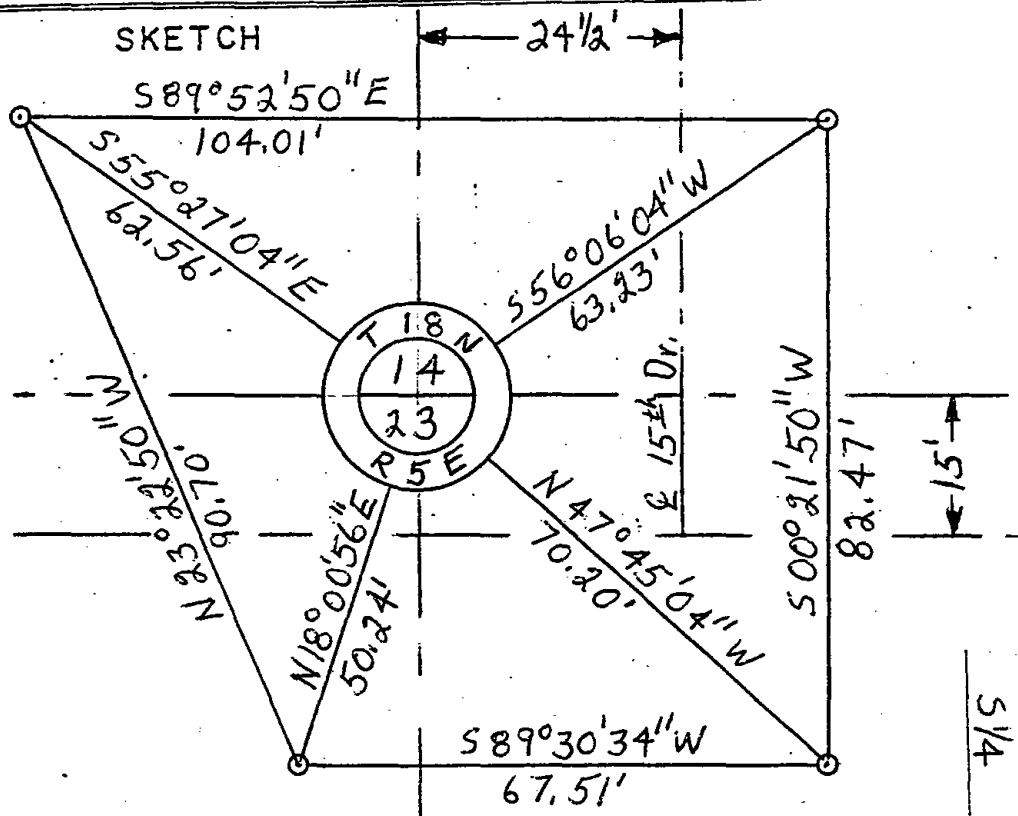
RECORD AND CERTIFICATION OF U.S. PUBLIC LAND SURVEY CONTROL STATION  
E.D-716-72

District 04	Project I. D. 6160-07-73	Located by P. J. Liepitz		
Corner S 1/4	SECTION 14	Township 18 N	Range (E,W) 5E	County Adams
Wisconsin Coordinates CORNER	East (X)	North (Y)	Elevation (Z)	Zone
Control Station Name	East (X)	North (Y)	Elevation (Z)	Zone
Horizontal — NORTH AMERICAN, 1927		CONTROL DATUM Vertical — MEAN SEA LEVEL, 1929 ADJUSTMENT		
Horizontal — _____ Order _____		SURVEY CONTROL Vertical — _____ Order _____		



LOCATION SKETCH  
(Location of landmark indicated by "X")

OK, 1-30-03-JG



I hereby certify that on the 22 day of October 1992, that I did locate the above corner which was evidenced by Harrison monument; I further certify that to perpetuate the location of such corner I did, at the exact location hereof, place a permanent marker consisting of \_\_\_\_\_

\_\_\_\_\_ ; I further certify that I did establish 4 references or witness monuments consisting of Bernsten monuments located as shown above:

SEAL

Signature Registered Land Surveyor	Registration No. S -	Title
------------------------------------	-------------------------	-------

S 1/4  
14  
18 N  
5 E