

24  
SECTION

18  
TOWN

04  
RANGE

# ADAMS COUNTY

COUNTY CORNER NO: 93  
ROMPORTOL ID: 41804240000

## PUBLIC LAND SURVEY MONUMENT RECORD

TYPE OF MONUMENT: 1-1/4" O.D. IRON PIPE  
ADAMS COUNTY COORDINATES, NAD 83 (2007)

N. 234747.407

E. 494666.086

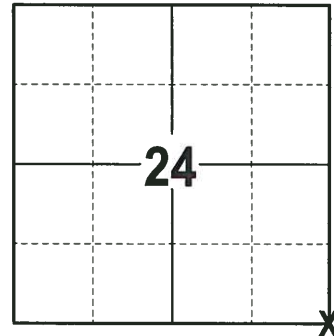
ELEVATION-      -      -      DATUM      -      -     

FIELD WORK DATE: 12/20/2017

### BASIS FOR MONUMENT LOCATION

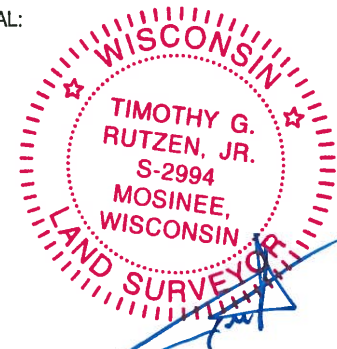
2013 - PLS 1478 RE-DRAFTED PRIOR TIE SHEET BY GREGORY P. RHINEHART FROM 1979. RHINEHART RAN EDM/T2 TRAVERSE OF SECTION 19-18-5 TO DETERMINE THE SEARCH AREAS. INVESTIGATION YIELDED NO EVIDENCE OF THE ORIGINAL MONUMENT OR ANY SUBSEQUENT MONUMENTATION. THE LOCATION FOR THIS CORNER WAS DETERMINED BY THE SINGLE PROPORTIONATE METHOD ON A LINE BETWEEN THE NW CORNER OF SECTION 19-18-5 AND THE W1/4 CORNER OF 30-18-5. THE EXISTING 1" IRON PIPE AT THE W1/4 CORNER OF SECTION 19 WAS NOT USED TO PROPORTION IN THE SW CORNER BECAUSE THE PIPE AT THAT LOCATION DID NOT "FIT" OTHER COLLATERAL EVIDENCE IN SECTION 19. SET A 1"X5" IRON PIPE W/CAP AND TIED OUT.

2017 - PLS 2994 FOUND A 1-1/4" O.D. IRON PIPE 6" ABOVE THE GROUND SURFACE AND 2 WITNESS TREES. THE MONUMENT AGREES WITH THE EXISTING WITNESS TREES. ACCEPTED THE 1-1/4" O.D. IRON PIPE AS THE CORNER LOCATION. SET 4 NEW TIES AND MEASURED TO THE TIES AND WITNESS TREES.



**LOCATION**  
(INDICATE CORNER BY "X")

SEAL:



DATA SHOWN HERE ON THIS TIE SHEET IS CORRECT AND COMPLETE TO THE BEST OF MY KNOWLEDGE AND BELIEF.

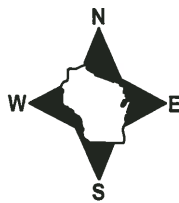
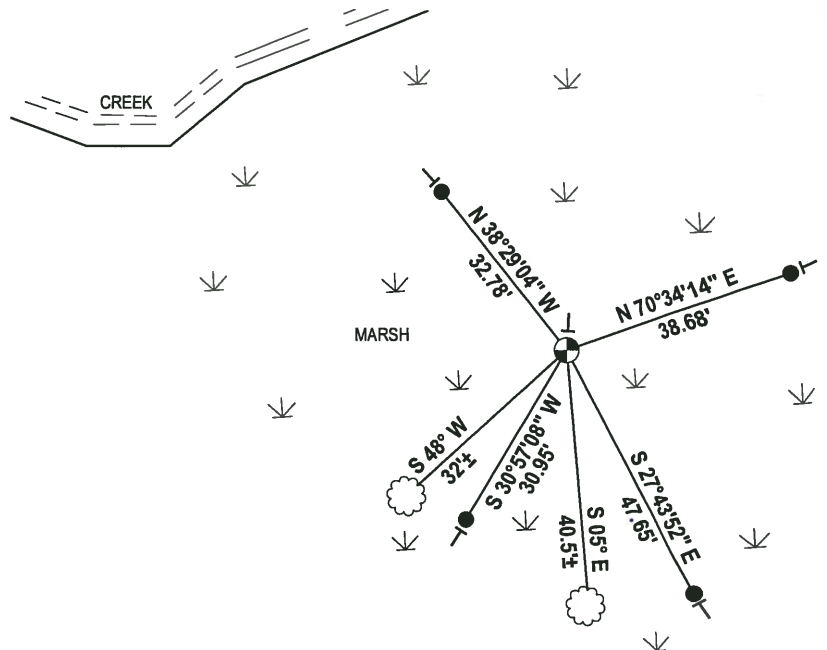
PROFESSIONAL LAND SURVEYOR

DATE 1-4-18

### - TIE SKETCH

NOTE 1: THE CORNER FALLS 76± SOUTH OF THE EDGE OF WATER OF THE CREEK.

NOTE 2: FOR BEST ACCESS, PARK AT THE INTERSECTION OF 20TH AND CYPRESS AVE AND WALK NORTH TO THE CORNER.



- 3/4" x 48" IRON REBAR SET, 1.50#/FT
- ⊕ 1-1/4" O.D. IRON PIPE FOUND
- VINYL "T" POST
- ☼ WITNESS TREE FOUND

