

19 SECTION 18 TOWN 05 RANGE

ADAMS COUNTY

COUNTY CORNER NO: 82
 ROMPORTOL ID: 41805190020

PUBLIC LAND SURVEY MONUMENT RECORD

TYPE OF MONUMENT: HARRISON
 ADAMS COUNTY COORDINATES, NAD 83 (2007)

N. 234707.639

E. 496783.159

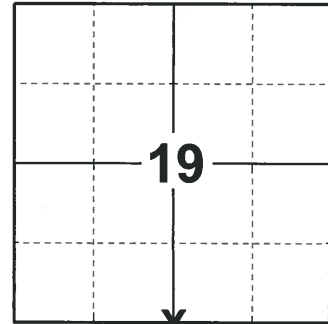
ELEVATION- _____ DATUM _____

FIELD WORK DATE: 11/01/2018

BASIS FOR MONUMENT LOCATION

1979 - PLS 1478 RAN EDM/T2 TRAVERSE AROUND SECTION 19 TO DETERMINE SEARCH AREAS IN SECTION 19. AB KIEDROWSKI DUG WITH A BACKHOE AND FOUND NEITHER THE ORIGINAL MONUMENT OR ANY SUBSEQUENT REMONUMENTATION. CALCULATED THE CORNER LOCATION SINGLE PROPORTIONATE AND ON LINE BETWEEN ADJACENT SECTION CORNERS. SET A HARRISON MONUMENT AT THE CALCULATED LOCATION AND TIED OUT.

2018 - PLS 2675 FOUND A HARRISON MONUMENT 12" BELOW THE ROAD SURFACE, 2 TIES AND 1 WITNESS. THE MONUMENT AGREES WITH THE EXISTING TIES AND WITNESS. ACCEPTED THE HARRISON MONUMENT AS THE CORNER LOCATION. SET 2 NEW TIES AND MEASURED TO THE TIES AND WITNESS.



LOCATION

(INDICATE CORNER BY "X")

SEAL:



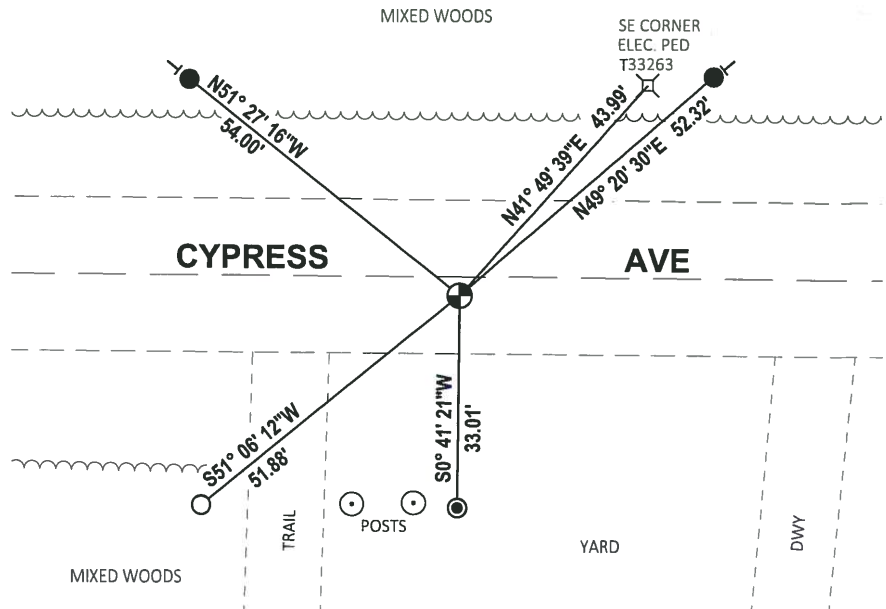
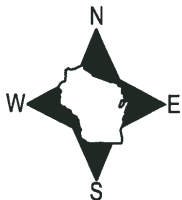
DATA SHOWN HERE ON THIS TIE SHEET IS CORRECT AND COMPLETE TO THE BEST OF MY KNOWLEDGE AND BELIEF.

PROFESSIONAL LAND SURVEYOR

DATE 12/4/2018

- TIE SKETCH

NOTE: THE CORNER FALLS 3 1/2" SOUTH OF THE CENTERLINE OF CYPRESS AVE.

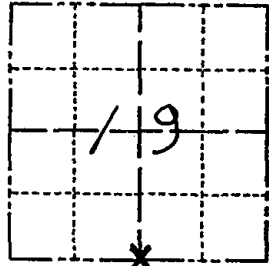


- SET 3/4" x 18" IRON REBAR, 1.50#/FT
- FOUND 3/4" IRON ROD
- ⊙ FOUND 1-1/4" IRON ROD
- ⊕ FOUND HARRISON MONUMENT
- VINYL "T" POST

Government Land Corner Certificate

ADAMS County
 TYPE OF MONUMENT: Rail road spike ^{Harrison} to be set in the Spring of
 STATE PLANE COORDINATES: N _____ '79
 E _____
 ELEVATION — M.S.L. DATUM: _____
 THETA ANGLE: _____
 FIELD BOOK: 57 PAGE 85
 DRAWN BY: J. S. KEDROWSKI

CORNER NO. 82
 SECTION 19
 TOWN 18 N.
 RANGE 5 E



LOCATION
(Indicated by 'X')

BASIS FOR MONUMENT LOCATION

Show info such as: History of corner, with reference to Vol. and pg., dates, surveyor; exact description of monument replaced; if location computed, by taped or EDM traverse; landowner remarks, etc. (Use reverse side if necessary)

Ran EDM/T2 traverse around Section 19 to determine seach areas in section 19.

AB Kiedrowski dug with backhoe and found neither the the original monument nor any subsequent remonumentation.

This corner was set single proportionate and on line between the adjacent section corners.

SEAL:



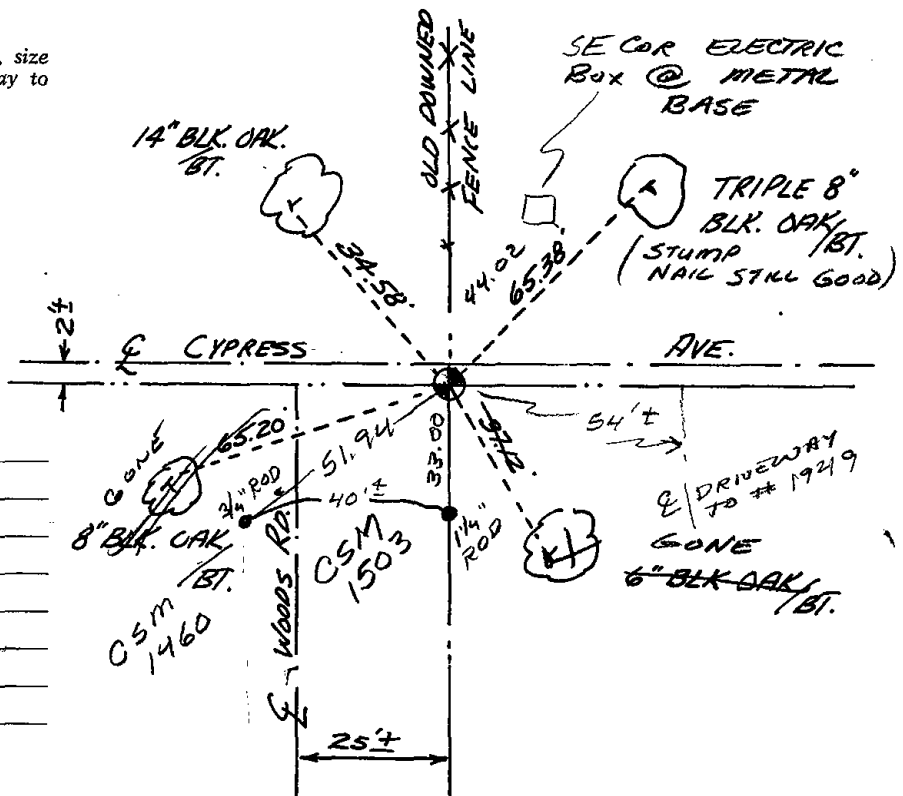
DATA SHOWN HERE ON
CERTIFIED CORRECT:

Gregory P. Rhinehart
Registered Land Surveyor

DATE: Jan 2, 79

TIE SKETCH

Show at least four ties, also fence lines, roads, topo, size and type of witness trees' and if off road - best way to arrive at corner.



MAINTENANCE RECORD

Date	Init.	Remarks
3-1-83	GR-SS	O.K.
8-20-92	JG	OK
2-4-98	JG	OK
1-30-03	JG	1-GONE, 5-LEFT
11-20-07	CS-SS	MON OK - 2 NEW TIES