

20 SECTION 18 TOWN 05 RANGE

ADAMS COUNTY

COUNTY CORNER NO: 85
 ROMPORTOL ID: 4180520000

PUBLIC LAND SURVEY MONUMENT RECORD

TYPE OF MONUMENT: HARRISON
 ADAMS COUNTY COORDINATES, NAD 83 (2007)

N. 234648.813

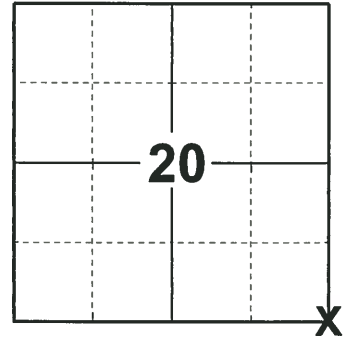
E. 504673.007

ELEVATION- _____ DATUM _____

FIELD WORK DATE: 11/01/2018

BASIS FOR MONUMENT LOCATION

1971 - PLS 981 FOUND NAIL, REPLACED WITH HARRISON MONUMENT AND TIED OUT.
 2018 - PLS 2675 FOUND A HARRISON MONUMENT FLUSH WITH THE ROAD SURFACE AND 2 WITNESSES. THE MONUMENT AGREES WITH THE EXISTING WITNESSES. ACCEPTED THE HARRISON MONUMENT AS THE CORNER LOCATION. SET 4 NEW TIES AND MEASURED TO THE TIES AND WITNESSES.



LOCATION

(INDICATE CORNER BY "X")

SEAL:



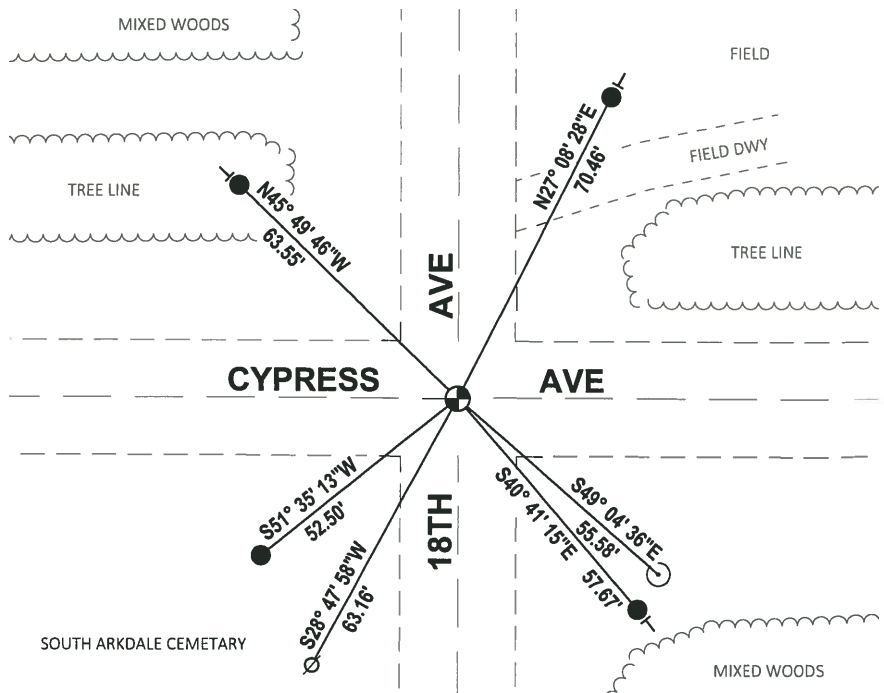
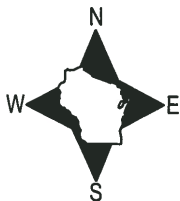
DATA SHOWN HERE ON THIS TIE SHEET IS CORRECT AND COMPLETE TO THE BEST OF MY KNOWLEDGE AND BELIEF.

PROFESSIONAL LAND SURVEYOR

DATE 12/4/2018

- TIE SKETCH

NOTE: THE CORNER FALLS 0.5± WEST OF THE CENTERLINE OF 18TH AVE.



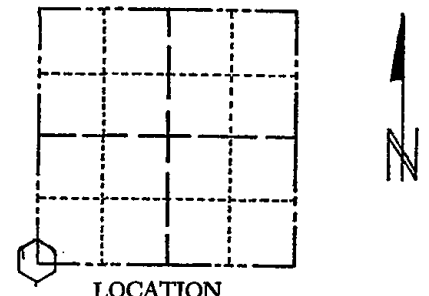
- SET 3/4" x 18" IRON REBAR, 1.50#/FT
- ⊕ FOUND HARRISON MONUMENT
- ⊘ WITNESS POWER POLE
- ⊙ WITNESS GUIDE POLE
- VINYL "T" POST

ADAMS COUNTY

Survey Monument Record

CORNER NO. 8
 SECTION 21
 TOWN 18
 RANGE 5

TYPE OF MONUMENT: 30" HARRISON
 STATE PLANE COORDINATES: N _____
 E _____
 ELEVATION — M.S.L. DATUM: _____
 THETA ANGLE: _____
 FIELD BOOK: 104 PAGE 40



BASIS FOR MONUMENT LOCATION

(Use reverse side if necessary)

Show info such as: History of corner, with reference to Vol. and pg, dates, surveyor; exact description of monument replaced; if location computed, by taped or EDM traverse; landowner remarks, etc.

SEAL:

Found nail set monument July 7, 1971

Sam T. Mullen R.L.S. S-981

- OK 11-17-78 RN-SS
- OK 3-1-83 SR-SS
- 1-NEW TIE, MON. OK 8-20-92 - JG
- 1-NEW, MON. OK 2-4-98 - JG
- 1-GONE, 1-30-03 - JG
- OK 11-20-07 CS-SS

CERTIFIED CORRECT:

Registered Land Surveyor

DATE: _____

TIE SKETCH

(Show at least four ties)

