

21
SECTION

18
TOWN

05
RANGE

ADAMS COUNTY

COUNTY CORNER NO: 87

ROMPORTOL ID: 4180521000

PUBLIC LAND SURVEY MONUMENT RECORD

TYPE OF MONUMENT: HARRISON
ADAMS COUNTY COORDINATES, NAD 83 (2007)

N. 234664.689

E. 509912.416

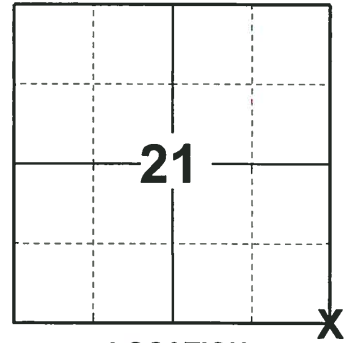
ELEVATION- DATUM

FIELD WORK DATE: 10/31/2018

BASIS FOR MONUMENT LOCATION

1971 - PLS 981 SET HARRISON MONUMENT AND TIED OUT.

2018 - PLS 2675 FOUND A HARRISON MONUMENT 2" BELOW THE ROAD SURFACE. FOUND NO EVIDENCE OF ANY OF THE EXISTING TIES OR WITNESSES. ACCEPTED THE HARRISON MONUMENT AS THE BEST EVIDENCE OF THE CORNER LOCATION. SET 4 NEW TIES AND MEASURED TO THE TIES.



LOCATION

(INDICATE CORNER BY "X")

SEAL:



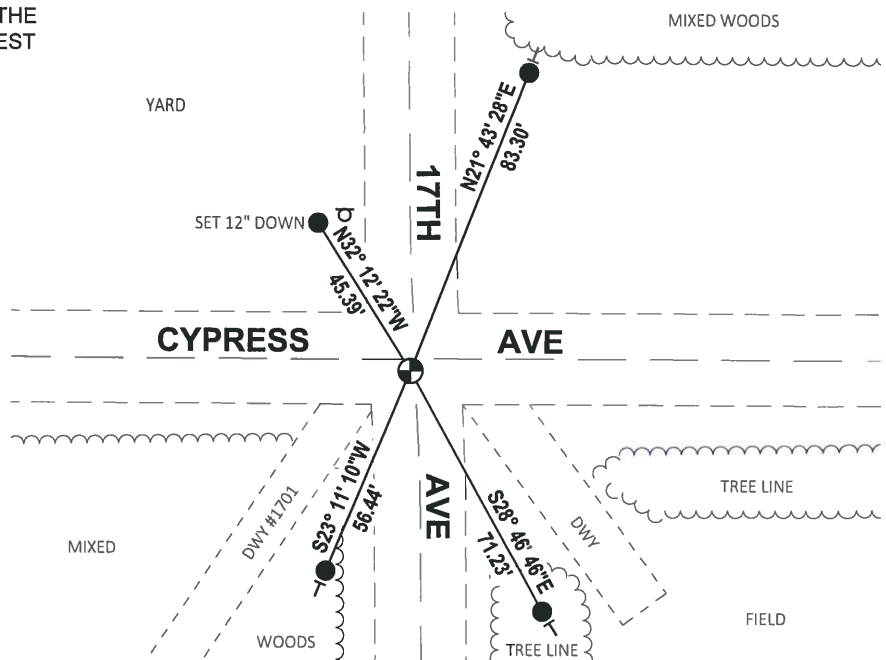
DATA SHOWN HERE ON THIS TIE SHEET IS CORRECT AND COMPLETE TO THE BEST OF MY KNOWLEDGE AND BELIEF.

PROFESSIONAL LAND SURVEYOR

DATE 12/4/2018

TIE SKETCH

NOTE: THE CORNER FALLS 3'± SOUTH OF THE CENTERLINE OF CYPRESS AVE AND 1'± WEST OF THE CENTERLINE OF 17TH AVE.



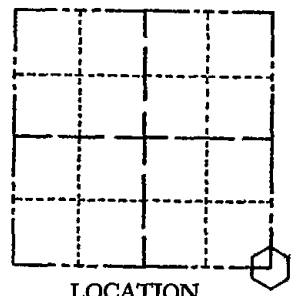
- SET 3/4" x 18" IRON REBAR, 1.50#/FT
- ⊕ FOUND HARRISON MONUMENT
- Ⓧ SIGN
- VINYL "T" POST

ADAMS COUNTY

Survey Monument Record

TYPE OF MONUMENT: 30" HARRISON
STATE PLANE COORDINATES: N. E.
ELEVATION - M.S.L. DATUM:
THETA ANGLE:
FIELD BOOK: 104 PAGE 45

CORNER NO. 13
SECTION 21
TOWN 18
RANGE 5



LOCATION (Indicated by 'X')

SEAL:

BASIS FOR MONUMENT LOCATION

(Use reverse side if necessary)

Show info such as: History of corner, with reference to Vol. and pg, dates, surveyor; exact description of monument replaced; if location computed, by taped or EDM traverse; landowner remarks, etc.

Set monument

July 8, 1971

Sam T. Mullen R.L.S. S-981

OK 7-8-78 RK-SS
3-1-83 GR-SS 4 NEW TIES
3-TIE GONE, 4 TIES LEFT, MON. OK 8-20-92-JG
1-NEW-2-4-98-JG
OK, 1-29-03-JG
2-NEW 11-20-07 CS-SS

CERTIFIED CORRECT:

Registered Land Surveyor

DATE:

TIE SKETCH

(Show at least four ties)

R.R. SPIKE SET

