

22 SECTION    18 TOWN    05 RANGE

# ADAMS COUNTY

COUNTY CORNER NO: 88  
 ROMPORTOL ID: 41805220020

## PUBLIC LAND SURVEY MONUMENT RECORD

TYPE OF MONUMENT: HARRISON  
 ADAMS COUNTY COORDINATES, NAD 83 (2007)

N. 234673.197

E. 512551.144

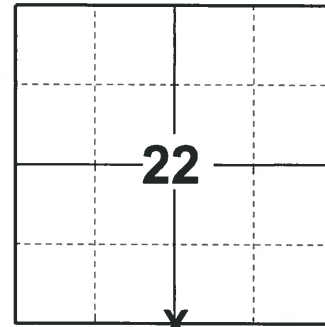
ELEVATION- \_\_\_\_\_ DATUM \_\_\_\_\_

FIELD WORK DATE: 10/31/2018

### BASIS FOR MONUMENT LOCATION

1973 - PLS 878 LOCATION DETERMINED BY EXPANDING ON SAM MULLEN SURVEY IN THE WEST 1/2 OF THE SECTION. SET A 30" HARRISON MONUMENT AT THE CORNER LOCATION AND TIED OUT.

2018 - PLS 2675 FOUND A HARRISON MONUMENT 2" BELOW THE ROAD SURFACE, 1 TIE AND 1 WITNESS. THE MONUMENT AGREES WITH THE EXISTING WITNESS AND TIE. ACCEPTED THE HARRISON MONUMENT AS THE CORNER LOCATION. SET 3 NEW TIES AND MEASURED TO THE TIES AND WITNESS.



**LOCATION**

(INDICATE CORNER BY "X")

SEAL:



DATA SHOWN HERE ON THIS TIE SHEET IS CORRECT AND COMPLETE TO THE BEST OF MY KNOWLEDGE AND BELIEF.

PROFESSIONAL LAND SURVEYOR

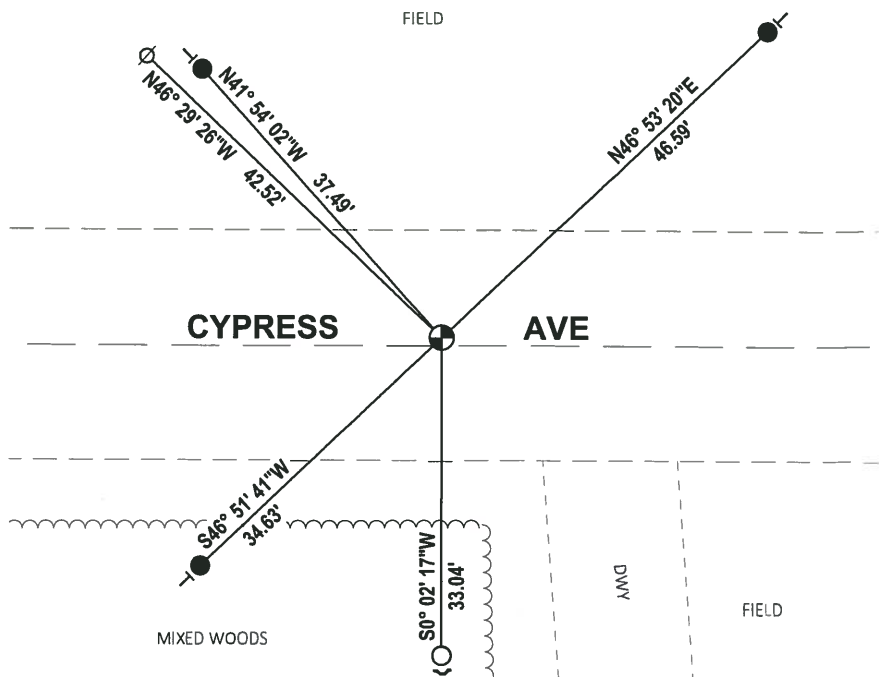
DATE 12/4/2018

### TIE SKETCH

NOTE: THE CORNER FALLS 1'± NORTH OF THE CENTERLINE OF CYPRESS AVE.



- SET 3/4" x 18" IRON REBAR, 1.50#/FT
- FOUND 3/4" IRON ROD
- ⊕ FOUND HARRISON MONUMENT
- ∅ WITNESS POWER POLE
- ↙ STEEL FENCE POST
- | VINYL "T" POST



# ADAMS COUNTY

## Survey Monument Record

TYPE OF MONUMENT: 30" HARRISON

STATE PLANE COORDINATES: N \_\_\_\_\_

E \_\_\_\_\_

ELEVATION — M.S.L. DATUM: \_\_\_\_\_

THETA ANGLE: \_\_\_\_\_

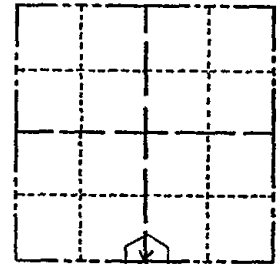
FIELD BOOK: 103 PAGE 139

CORNER NO. 139

SECTION 22

TOWN 18

RANGE 5



LOCATION  
(Indicated by 'X')

SEAL:

### BASIS FOR MONUMENT LOCATION

(Use reverse side if necessary)

Show info such as: History of corner, with reference to Vol. and pg, dates, surveyor; exact description of monument replaced; if location computed, by taped or EDM traverse; landowner remarks, etc.

Set 30" Harrison monument on June 20, 1972.

by Anthony Kiedrowski R.L.S. 878

Location determined by expanding on Sam Mullen survey in west  $\frac{1}{2}$  of section.

Note. FB 106 lost.

OK 7-8-78 RK-SS  
 3-1-83 GR-SS OK  
 OK, 8-20-92 - JG  
 ALL OK 2-4-98 - JG  
 1-GONE, 1-NEW, 1-29-03 - JG  
 OK, 12-11-07 - JG - JS



CERTIFIED CORRECT:

*Anthony B. Kiedrowski*  
 Registered Land Surveyor

DATE: 1-16-73

### TIE SKETCH

(Show at least four ties)

