

22 SECTION 18 TOWN 05 RANGE

ADAMS COUNTY

COUNTY CORNER NO: 89
ROMPORTOL ID: 41805220000

PUBLIC LAND SURVEY MONUMENT RECORD

TYPE OF MONUMENT: HARRISON
ADAMS COUNTY COORDINATES, NAD 83 (2007)

N. 234673.547

E. 515187.106

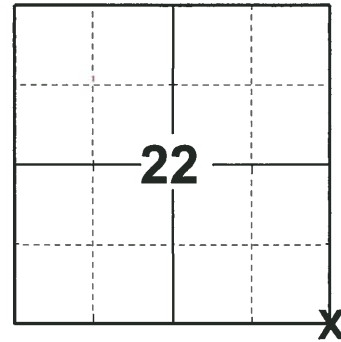
ELEVATION- - - - DATUM - - - -

FIELD WORK DATE: 10/31/2018

BASIS FOR MONUMENT LOCATION

1978 - PLS 878 EXCAVATED WITH A BACKHOE AND FOUND A 7"x8"x18" LONG IRREGULAR SHAPED SANDSTONE DOWN 12". EXISTING HARRISON MONUMENT WAS SET BY S.T. MULLEN AND WAS 5' SOUTHEAST OF THE FOUND STONE. REMOVED THE HARRISON MONUMENT AND RESET IT ABOVE THE LOWERED STONE. TIED OUT CORNER. THE STONE WAS CALLED FOR BY M.C. SMITH, VOL. 1, PAGE 153, SEPT. 1912.

2018 - PLS 2675 FOUND A HARRISON MONUMENT 4" BELOW THE ROAD SURFACE, 1 TIE, 1 NGS MONUMENT AND 1 WITNESS. THE MONUMENT AGREES WITH THE EXISTING WITNESS. ACCEPTED THE HARRISON MONUMENT AS THE CORNER LOCATION. SET 4 NEW TIES AND MEASURED TO THE TIES, NGS MONUMENT AND WITNESS.



LOCATION

(INDICATE CORNER BY "X")

SEAL:



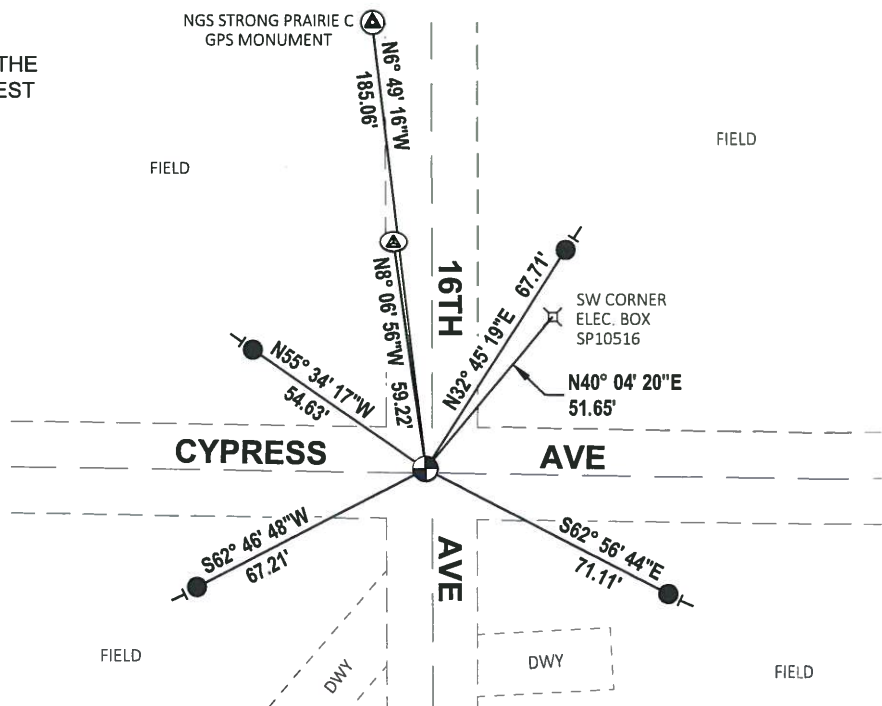
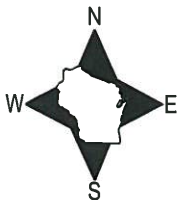
DATA SHOWN HERE ON THIS TIE SHEET IS CORRECT AND COMPLETE TO THE BEST OF MY KNOWLEDGE AND BELIEF.

PROFESSIONAL LAND SURVEYOR

DATE 12/4/2018

- TIE SKETCH

NOTE: THE CORNER FALLS 1'± NORTH OF THE CENTERLINE OF CYPRESS AVE AND 2'± WEST OF THE CENTERLINE OF 16TH AVE.

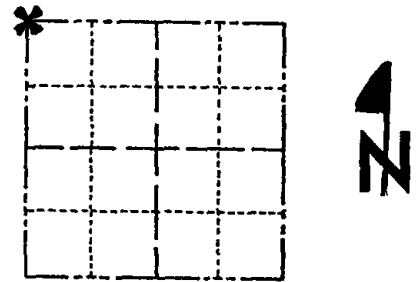


- SET 3/4" x 18" IRON REBAR, 1.50#/FT
- ⊕ FOUND RAILROAD SPIKE
- ⊙ FOUND HARRISON MONUMENT
- VINYL "T" POST

Government Land Corner Certificate

ADAMS _____ County
 TYPE OF MONUMENT: HARRISON
 STATE PLANE COORDINATES: N _____
 E _____
 ELEVATION — M.S.L. DATUM: _____
 THETA ANGLE: _____
 FIELD BOOK: 57 (101) PAGE 60 (122)
 DRAWN BY: SCOTT SORENSEN

CORNER NO. 89
 SECTION 26
 TOWN 18
 RANGE 5



LOCATION
(Indicated by 'X')

BASIS FOR MONUMENT LOCATION

Show info such as: History of corner, with reference to Vol. and pg., dates, surveyor; exact description of monument replaced; if location computed, by taped or EDM traverse; landowner remarks, etc. (Use reverse side if necessary)

Excavated with backhoe. Found 7"x8"x18" long irregular shaped sandstone down 12". Existing Harrison monument set by S.T.Mullen was 5' southeast of stone found. Monument set bt STM removed and reset aboved lowered stone.

Stone called for by M.C. Smith, Vol. 1, page 153, Sept., 1912.

SEAL:



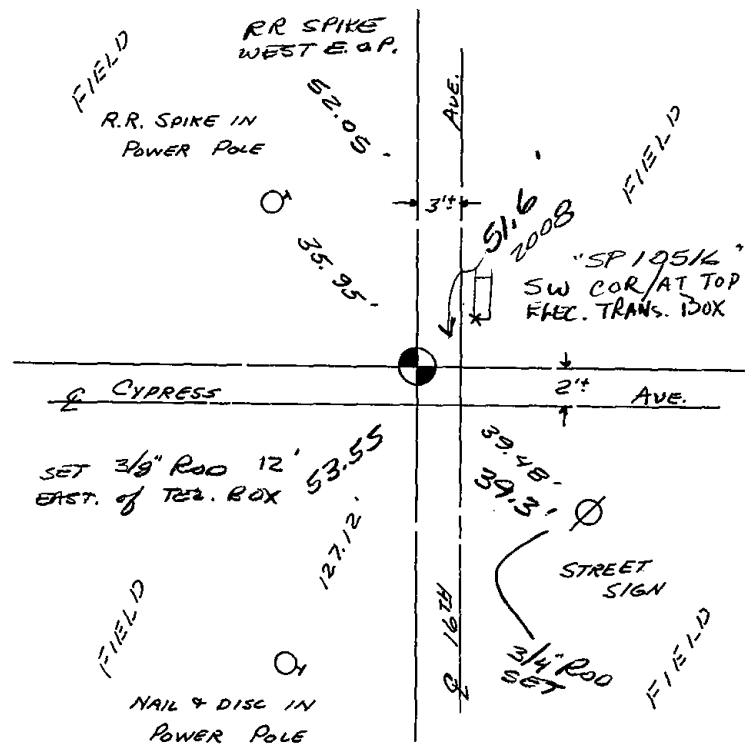
DATA SHOWN HERE ON
CERTIFIED CORRECT:

Anthony B. Kiedrowski
Registered Land Surveyor

DATE: 4/11/78

TIE SKETCH

Show at least four ties, also fence lines, roads, topo, size and type of witness trees' and if off road - best way to arrive at corner.



MAINTENANCE RECORD

Date	Init.	Remarks
3-1-83	GR-SS	OK
8-20-92	JG	1-NEW TIE, MON. OK
2-4-98	JG	OK
1-29-03	JG	OK
8-20-08	KS-SS	