

27 SECTION 18 TOWN 05 RANGE

# ADAMS COUNTY

COUNTY CORNER NO: 98  
ROMPORTOL ID: 41805272000

## PUBLIC LAND SURVEY MONUMENT RECORD

TYPE OF MONUMENT: HARRISON  
ADAMS COUNTY COORDINATES, NAD 83 (2007)

N. 232036.003

E. 515183.194

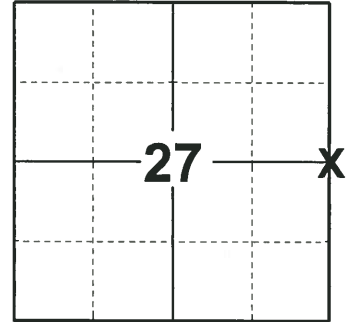
ELEVATION-      DATUM     

FIELD WORK DATE: 11/19/2018

### BASIS FOR MONUMENT LOCATION

1978 - PLS 878 EXCAVATED WITH A BACKHOE AND FOUND TWO 6"x6"x6" WHITE SANDSTONES NORTH AND SOUTH OF THE BOTTOM 18" OF A POINTED AND ROTTED 3" DIA WOOD POST. NO RESURVEYS OF RECORD. LEFT STONE AS FOUND. SET A HARRISON MONUMENT AND TIED OUT.

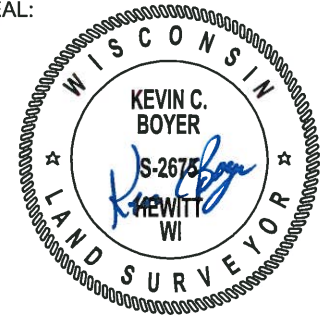
2018 - PLS 2675 FOUND A HARRISON MONUMENT 4" BELOW THE ROAD SURFACE AND 1 TIE. THE MONUMENT AGREES WITH THE EXISTING TIE. ACCEPTED THE HARRISON MONUMENT AS THE CORNER LOCATION. SET 3 NEW TIES AND MEASURED TO THE TIES.



### LOCATION

(INDICATE CORNER BY "X")

SEAL:



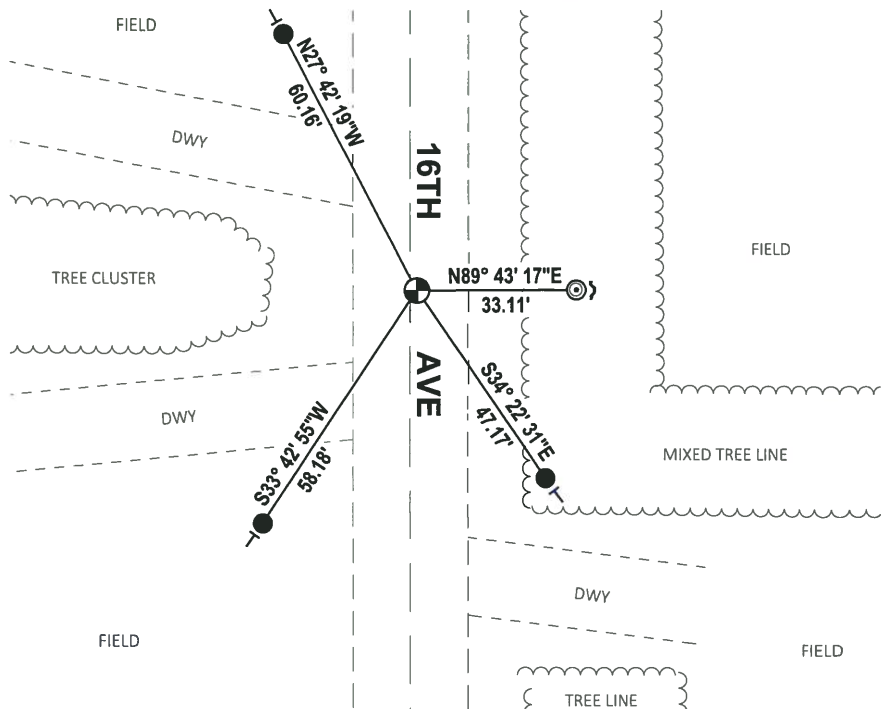
DATA SHOWN HERE ON THIS TIE SHEET IS CORRECT AND COMPLETE TO THE BEST OF MY KNOWLEDGE AND BELIEF.

PROFESSIONAL LAND SURVEYOR

DATE 12/4/2018

### - TIE SKETCH

NOTE: THE CORNER FALLS 1'± EAST OF THE CENTERLINE OF 16TH AVE.

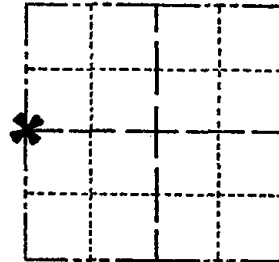


- SET 3/4" x 18" IRON REBAR, 1.50#/FT
- ◎ FOUND 2-3/8" O.D. IRON PIPE
- ⊙ FOUND HARRISON MONUMENT
- ↘ STEEL FENCE POST
- └ VINYL "T" POST

# Government Land Corner Certificate

ADAMS \_\_\_\_\_ County  
 TYPE OF MONUMENT: HARRISON  
 STATE PLANE COORDINATES: N \_\_\_\_\_  
 E \_\_\_\_\_  
 ELEVATION — M.S.L. DATUM: \_\_\_\_\_  
 THETA ANGLE: \_\_\_\_\_  
 FIELD BOOK: 57 (101) PAGE 59 (124)  
 DRAWN BY: SCOTT SORENSEN

CORNER NO. 99  
 SECTION 26  
 TOWN 18  
 RANGE 5



LOCATION  
(Indicated by 'X')

## BASIS FOR MONUMENT LOCATION

Show info such as: History of corner, with reference to Vol. and pg., dates, surveyor; exact description of monument replaced; if location computed, by taped or EDM traverse; landowner remarks, etc. (Use reverse side if necessary)

Excavated with backhoe. Found two 6"x6"x6" white sandstones north and south of bottom 18" of pointed and rotted 3" dia wood post. See sketch. No resurveys of record. Left stones as found.



monument found

SEAL:



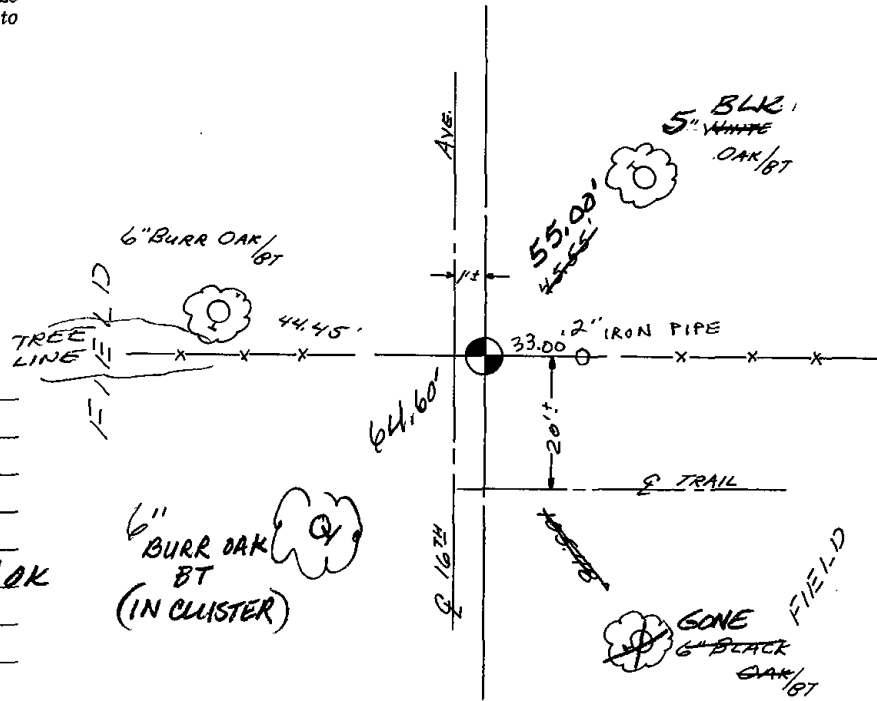
DATA SHOWN HERE ON CERTIFIED CORRECT:

*Anthony B. Kiedrowski*  
 Registered Land Surveyor

DATE: 4/11/78

## TIE SKETCH

Show at least four ties, also fence lines, roads, topo, size and type of witness trees' and if off road - best way to arrive at corner.



## MAINTENANCE RECORD

Date	Init.	Remarks
3-1-83	GR-SS	OK
9-2-92	JG	1-NEW TIE
2-5-98	JG	1-GONE, 1-NEW
1-29-03	JG	1-GONE, 1-NEW, MON. OK
12-11-07	JG-JS	OK