

29  
SECTION

18  
TOWN

05  
RANGE

# ADAMS COUNTY

COUNTY CORNER NO: 105

ROMPORTOL ID: 41805290000

## PUBLIC LAND SURVEY MONUMENT RECORD

TYPE OF MONUMENT: HARRISON (BROKEN-TOP)  
ADAMS COUNTY COORDINATES, NAD 83 (2007)

N. 229367.792

E. 504692.396

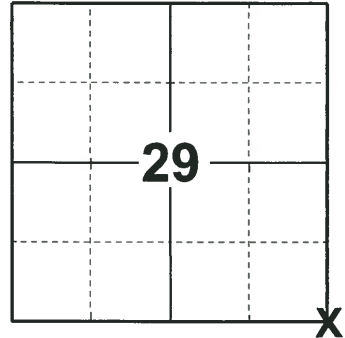
ELEVATION-      DATUM     

FIELD WORK DATE: 11/20/2018

### BASIS FOR MONUMENT LOCATION

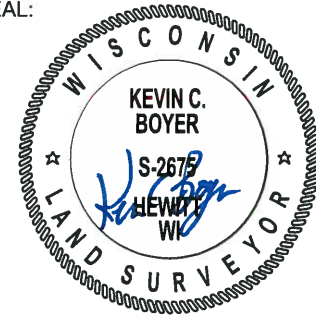
1975 - PLS 1103 EXCAVATION WITH A BACKHOE AND FOUND A 7"x7"x15" POINTED SANDSTONE SET BY M.C. SMITH IN APRIL OF 1914, PER VOL. 1, PAGE 193 OF COUNTY SURVEYOR RECORDS. VERIFIED LOCATION BY EDM TRAVERSE. LOWERED THE STONE AND SET A HARRISON MONUMENT OP TOP. TIED OUT THE CORNER.

2018 - PLS 2675 FOUND A HARRISON MONUMENT WITH A BROKEN-TOP 12" BELOW THE ROAD SURFACE AND 2 WITNESSES. THE MONUMENT AGREES WITH THE EXISTING WITNESSES. ACCEPTED THE HARRISON MONUMENT WITH A BROKEN-TOP AS THE CORNER LOCATION. SET 4 NEW TIES AND MEASURED TO THE TIES AND WITNESSES.



LOCATION  
(INDICATE CORNER BY "X")

SEAL:



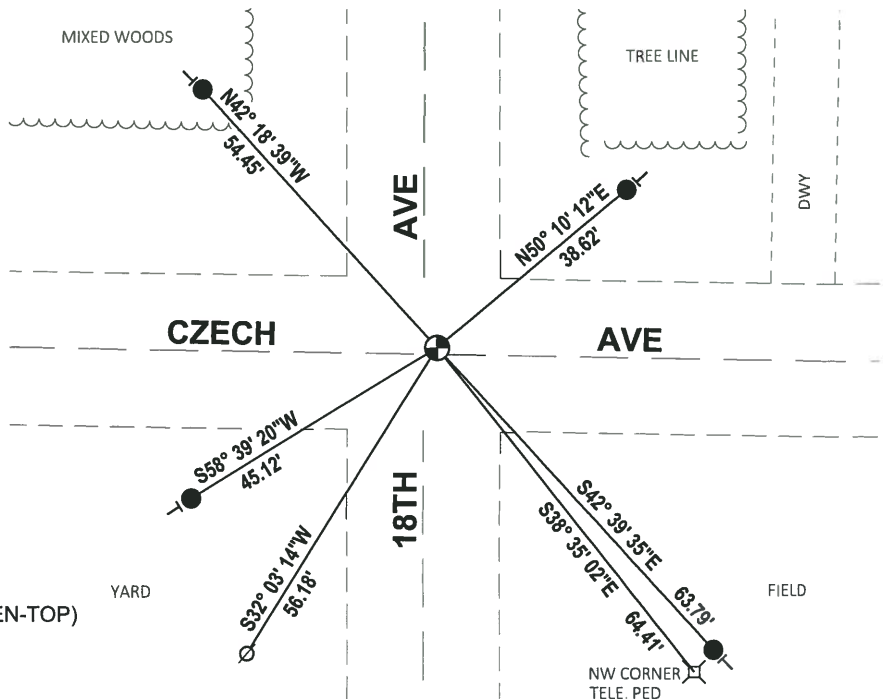
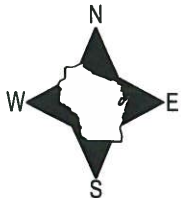
DATA SHOWN HERE ON THIS TIE SHEET IS CORRECT AND COMPLETE TO THE BEST OF MY KNOWLEDGE AND BELIEF.

PROFESSIONAL LAND SURVEYOR

DATE 12/4/2018

### TIE SKETCH

NOTE: THE CORNER FALLS 1'± NORTH OF THE CENTERLINE OF CZECH AVE AND 2'± EAST OF THE CENTERLINE OF 18TH AVE.



- SET 3/4" x 18" IRON REBAR, 1.50#/FT
- ⊕ FOUND HARRISON MONUMENT (BROKEN-TOP)
- ∅ WITNESS POWER POLE
- ⊖ VINYL "T" POST

**ADAMS COUNTY**

**Survey Monument Record**

TYPE OF MONUMENT: Harrison Standard

STATE PLANE COORDINATES: N \_\_\_\_\_

E \_\_\_\_\_

ELEVATION — M.S.L. DATUM: \_\_\_\_\_

THETA ANGLE: \_\_\_\_\_

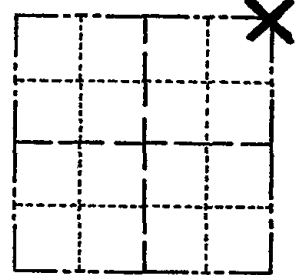
FIELD BOOK: 101 PAGE 6

CORNER NO. 796 (103)

SECTION 32

TOWN 18

RANGE 5



LOCATION  
(Indicated by 'X')

SEAL:



**BASIS FOR MONUMENT LOCATION**

(Use reverse side if necessary)

Show info such as: History of corner, with reference to Vol. and pg, dates, surveyor; exact description of monument replaced; if location computed, by taped or EDM traverse; landowner remarks, etc.

Excavated with backhoe. Found 7x7x15" pointed sandstone set by M.C.Smith in April of 1914, per Vol 1, page 193 of County Surveyor Records. Location verified by EDM traverse.

(Also see 1/183)

Lowered stone and set Harrison on top.

OK 11-17-78 RN-SS  
OK 3-1-83 GR-SS  
OK 8-18-92 BS

CERTIFIED CORRECT

2-GONE, 2-NEW, 2-4-98-JG  
OK, 1-30-03-JG  
2-GONE, 2-NEW 11-20-07 CS, SS

Registered Land Surveyor

DATE: 7/23/75

**TIE SKETCH**

(Show at least four ties)

Ties to nail in scribed trees.

