

28 SECTION 18 TOWN 05 RANGE

ADAMS COUNTY

COUNTY CORNER NO: 106
ROMPORTOL ID: 41805280020

PUBLIC LAND SURVEY MONUMENT RECORD

TYPE OF MONUMENT: HARRISON (BROKEN-TOP)
ADAMS COUNTY COORDINATES, NAD 83 (2007)

N. 229375.599

E. 507310.341

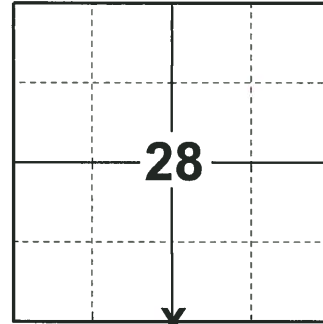
ELEVATION- - - - DATUM - - - -

FIELD WORK DATE: 11/20/2018

BASIS FOR MONUMENT LOCATION

1975 - PLS 1103 EXCAVATION WITH A BACKHOE BY A.B. KIEDROWSKI, COUNTY SURVEYOR YIELDED NO EVIDENCE OF THE ORIGINAL CORNER OR ANY REMONUMENTATION. CALCULATED THE CORNER LOCATION EQUIDISTANT AND ON LINE BETWEEN ADJACENT SECTION CORNERS. SET A HARRISON MONUMENT AT THE CALCULATED LOCATION AND TIED OUT.

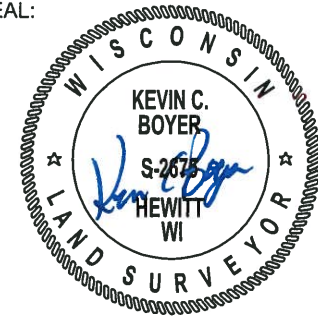
2018 - PLS 2675 FOUND A HARRISON MONUMENT WITH A BROKEN-TOP 4" BELOW THE ROAD SURFACE, 1 PROPERTY IRON AND 2 WITNESSES. THE MONUMENT AGREES WITH THE EXISTING PROPERTY IRON AND WITNESSES. ACCEPTED THE HARRISON MONUMENT WITH A BROKEN-TOP AS THE CORNER LOCATION. SET 4 NEW TIES AND MEASURED TO THE TIES, PROPERTY IRON AND WITNESSES.



LOCATION

(INDICATE CORNER BY "X")

SEAL:



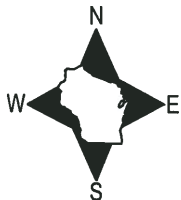
DATA SHOWN HERE ON THIS TIE SHEET IS CORRECT AND COMPLETE TO THE BEST OF MY KNOWLEDGE AND BELIEF.

PROFESSIONAL LAND SURVEYOR

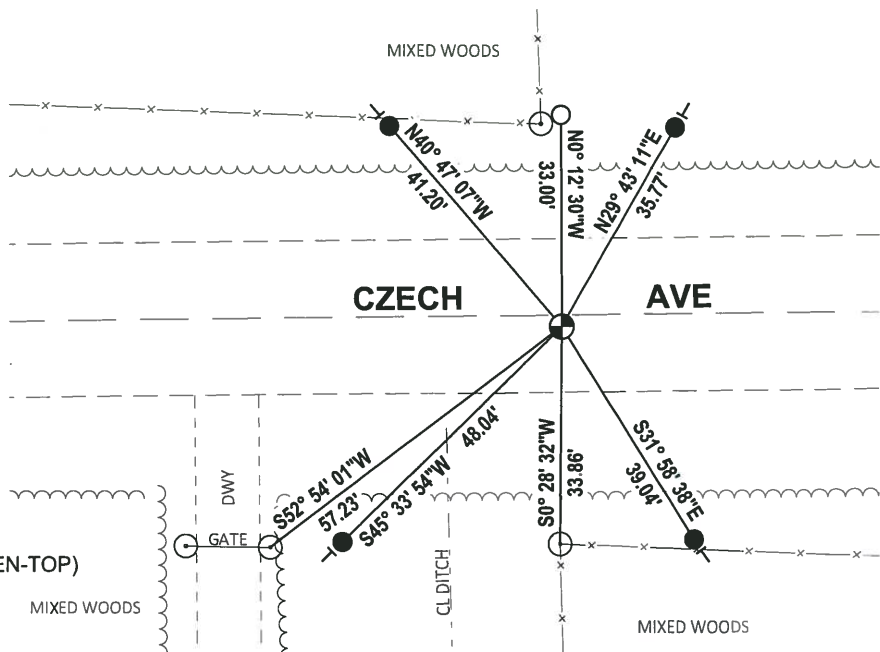
DATE 12/4/2018

- TIE SKETCH

NOTE: THE CORNER FALLS 2± SOUTH OF THE CENTERLINE OF CZECH AVE.



- SET 3/4" x 18" IRON REBAR, 1.50#/FT
- FOUND 3/4" IRON ROD
- ⊕ FOUND HARRISON MONUMENT (BROKEN-TOP)
- ┊ VINYL "T" POST
- WITNESS POST



ADAMS COUNTY

Survey Monument Record

TYPE OF MONUMENT: Standard Harrison

STATE PLANE COORDINATES: N _____

E _____

ELEVATION — M.S.L. DATUM: _____

THETA ANGLE: _____

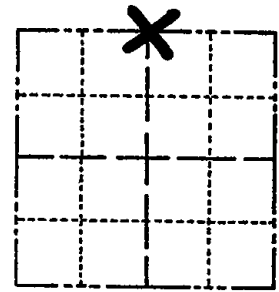
FIELD BOOK: _____ PAGE _____

CORNER NO. 794

SECTION 33

TOWN 18

RANGE 5



LOCATION
(Indicated by 'X')

SEAL:



BASIS FOR MONUMENT LOCATION

(Use reverse side if necessary)

Show info such as: History of corner, with reference to Vol. and pg, dates, surveyor; exact description of monument replaced; if location computed, by taped or EDM traverse; landowner remarks, etc.

Excavation with backhoe by A.B. Kiedrowski, County Surveyor, yielded no evidence of the original corner or any remonumentation.

Set corner equidistant and on line between adjacent section corners.

CERTIFIED CORRECT:

Dale C. Hagen
Registered Land Surveyor

DATE: August 7, 1975

- OK 11-17-78 RN-55
- 3 NEW TIES 3-1-83 GR-55
- OK 8-18-92 BS
- 1-GONE, 1-NEW, 2-4-98-JG
- 3-GONE, 4-NEW, 2-21-03-JG
- OK 11-20-07 CS-55

TIE SKETCH

(Show at least four ties)

NOTE: Ties in trees to nail in disc.

