

26  
SECTION

18  
TOWN

05  
RANGE

# ADAMS COUNTY

COUNTY CORNER NO: 111

ROMPORTOL ID: 4180526000

## PUBLIC LAND SURVEY MONUMENT RECORD

TYPE OF MONUMENT: HARRISON  
ADAMS COUNTY COORDINATES, NAD 83 (2007)

N. 229405.290

E. 520448.670

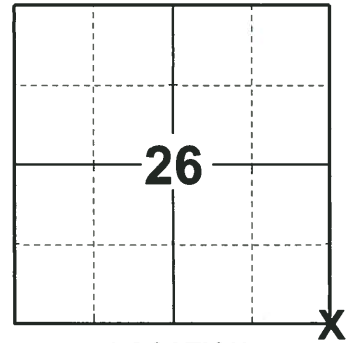
ELEVATION-      DATUM     

FIELD WORK DATE: 11/19/2018

### BASIS FOR MONUMENT LOCATION

1974 - PLS 878 EXCAVATED WITH A BACKHOE AND FOUND REMNANT OF WOOD POST. SET HARRISON MONUMENT AND TIED OUT.

2018 - PLS 2675 FOUND A HARRISON MONUMENT 10" BELOW THE ROAD SURFACE AND 1 WITNESS. THE MONUMENT AGREES WITH THE EXISTING WITNESS. ACCEPTED THE HARRISON MONUMENT AS THE CORNER LOCATION. SET 4 NEW TIES AND MEASURED TO THE TIES AND WITNESS.



LOCATION

(INDICATE CORNER BY "X")

SEAL:



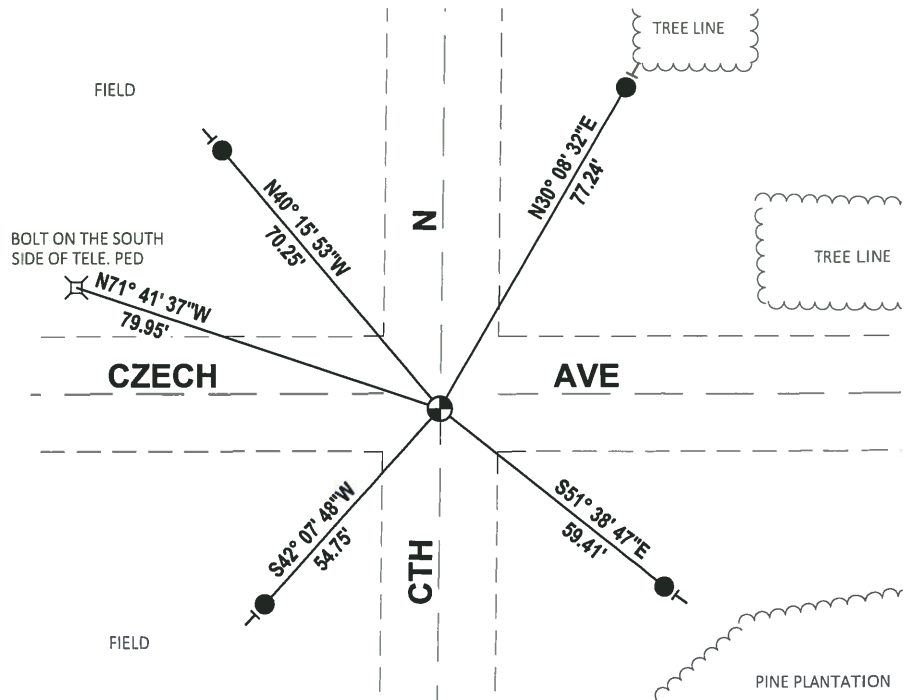
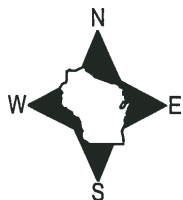
DATA SHOWN HERE ON THIS TIE SHEET IS CORRECT AND COMPLETE TO THE BEST OF MY KNOWLEDGE AND BELIEF.

PROFESSIONAL LAND SURVEYOR

DATE 12/4/2018

### TIE SKETCH

NOTE: THE CORNER FALLS 3± SOUTH OF THE CENTERLINE OF CZECH AVE.



- SET 3/4" x 18" IRON REBAR, 1.50#/FT
- ⊙ FOUND HARRISON MONUMENT
- VINYL "T" POST

ADAMS COUNTY

Survey Monument Record

TYPE OF MONUMENT: 30" HARRISON

STATE PLANE COORDINATES: N \_\_\_\_\_ E \_\_\_\_\_

ELEVATION — M.S.L. DATUM: \_\_\_\_\_

THETA ANGLE: \_\_\_\_\_

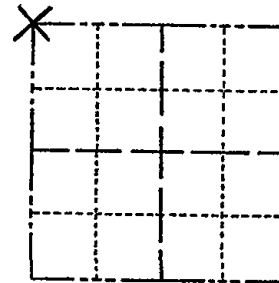
FIELD BOOK: 108 PAGE 107

CORNER NO. 319

SECTION 36

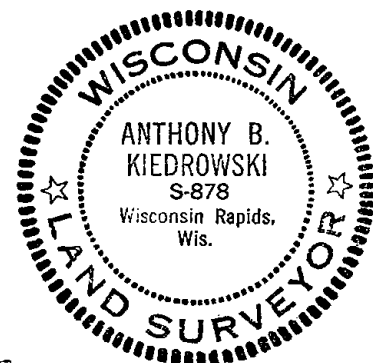
TOWN 18

RANGE 5



LOCATION (Indicated by 'X')

SEAL:



BASIS FOR MONUMENT LOCATION

(Use reverse side if necessary)

Show info such as: History of corner, with reference to Vol. and pg, dates, surveyor; exact description of monument replaced; if location computed, by taped or EDM traverse; landowner remarks, etc.

Excavated with backhoe, found remnant of wood post. See attached picture.

OK 7-8-78 RK-SS  
3-1-83 GR-SS 2 NEW TIES  
8-18-92 BS 2 GONE MON. O.K.  
1-GONE, 2-NEW 2-2-98  
OK, 1-29-03-JG  
OK, 12-11-07-JG-JS  
CERTIFIED CORRECT:  
Registered Land Surveyor

DATE: July 73

TIE SKETCH

(Show at least four ties)

