

32
SECTION

18
TOWN

05
RANGE

ADAMS COUNTY

COUNTY CORNER NO: 116

ROMPORTOL ID: 41805322000

PUBLIC LAND SURVEY MONUMENT RECORD

TYPE OF MONUMENT: HARRISON
ADAMS COUNTY COORDINATES, NAD 83 (2007)

N. 226731.662

E. 504658.903

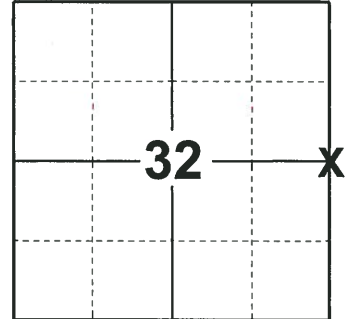
ELEVATION- - - - DATUM - - - -

FIELD WORK DATE: 11/26/2018

BASIS FOR MONUMENT LOCATION

1975 - PLS 878 EXCAVATED WITH A BACKHOE AND COULD NOT LOCATE THE STONE CALLED FOR IN RECORDS. AFTER FINDING THE STONE AT THE NE CORNER OF SECTION 32. RETURNED AND DID MORE EXCAVATING, BEING MORE SUCCESSFUL THIS TIME. FOUND THE 6"x8"x15" SANDSTONE. VERIFIED THE LOCATION BY EDM TRAVERSE. LOWERED THE SANDSTONE AND SET A HARRISON MONUMENT ON TOP. TIED OUT CORNER. STONE WAS CALLED FOR BY M.C. SMITH, NOV. 1913, VOL. 1 PAGE 183, COUNTY SURVEYOR RECORDS.

2018 - PLS 2675 FOUND A HARRISON MONUMENT IN THE ROAD SURFACE AND 1 TIE. THE MONUMENT AGREES WITH THE EXISTING TIE. ACCEPTED THE HARRISON MONUMENT AS THE CORNER LOCATION. SET 3 NEW TIES AND MEASURED TO THE TIES.



LOCATION
(INDICATE CORNER BY "X")

SEAL:



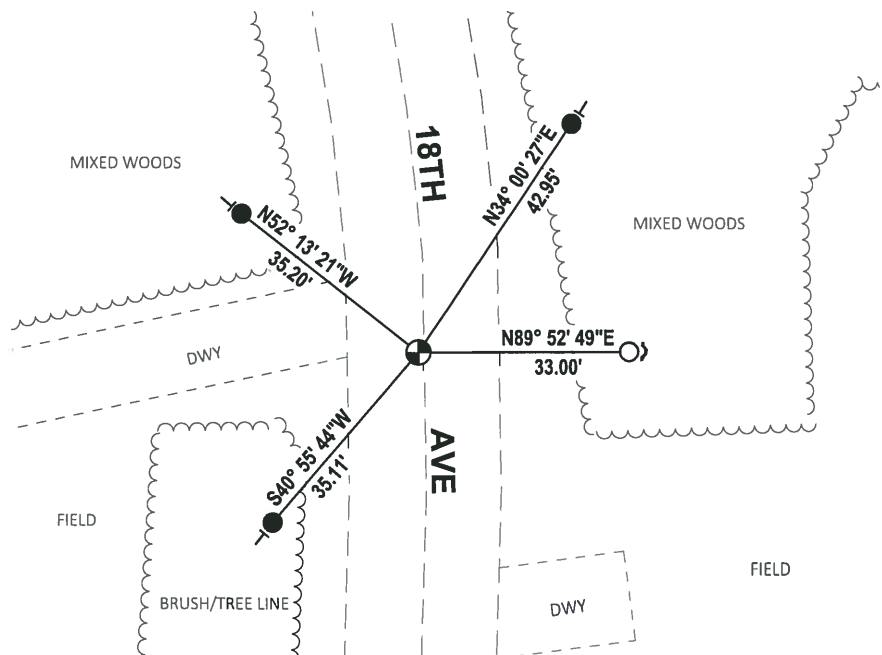
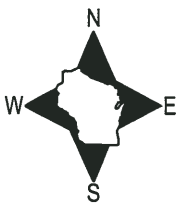
DATA SHOWN HERE ON THIS TIE SHEET IS CORRECT AND COMPLETE TO THE BEST OF MY KNOWLEDGE AND BELIEF.

PROFESSIONAL LAND SURVEYOR

DATE 12/4/2018

TIE SKETCH

NOTE: THE CORNER FALLS 1'± WEST OF THE CENTERLINE OF 18TH AVE.



- SET 3/4" x 18" IRON REBAR, 1.50#/FT
- FOUND 3/4" IRON ROD
- ⊙ FOUND HARRISON MONUMENT
- ↗ STEEL FENCE POST
- ↖ VINYL "T" POST

ADAMS COUNTY

Survey Monument Record

TYPE OF MONUMENT: Harrison standard

STATE PLANE COORDINATES: N _____
E _____

ELEVATION — M.S.L. DATUM: _____

THETA ANGLE: _____

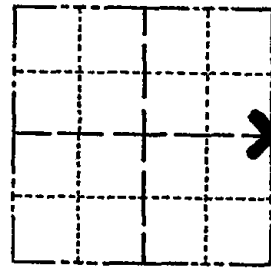
FIELD BOOK: 101 PAGE 6

CORNER NO. 665 ¹¹⁶

SECTION 32

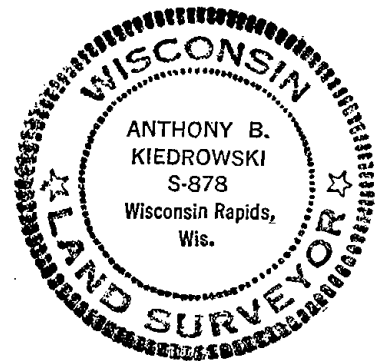
TOWN 18

RANGE 5



LOCATION
(Indicated by 'X')

SEAL:



BASIS FOR MONUMENT LOCATION

(Use reverse side if necessary)

Show info such as: History of corner, with reference to Vol. and pg, dates, surveyor; exact description of monument replaced; if location computed, by taped or EDM traverse; landowner remarks, etc.

Excavated with backhoe, could not locate stone called for in records. After finding stone at NE corner of this section, we returned and did more excavating, being more successful this time. Location of 6x8x15" sandstone found was verified by EDM traverse. Lowered stone and set Harrison on top.

Stone called for by M.C. Smith, Nov., 1913, Vol. 1 page 183, County Surveyor Records.

CORNER OK
10-31-75 U.M. - S.S.
OK -11-17-78 RN-SS
OK 3-2-83 GR-SS
OK 8-18-92 BS
ALL OK 2-4-98-JG

CERTIFIED CORRECT:

Anthony B. Kiedrowski
Registered Land Surveyor

DATE: 7/23/75

TIE SKETCH

(Show at least four ties)

Ties are to nail in scribed trees.

