

33 SECTION    18 TOWN    05 RANGE

# ADAMS COUNTY

COUNTY CORNER NO: 117  
 ROMPORTOL ID: 41805332000

## PUBLIC LAND SURVEY MONUMENT RECORD

TYPE OF MONUMENT: HARRISON (BROKEN-TOP)  
 ADAMS COUNTY COORDINATES, NAD 83 (2007)

N. 226740.106

E. 509884.301

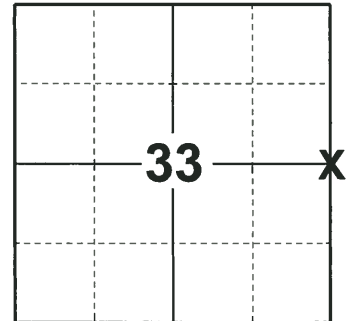
ELEVATION- \_\_\_\_\_ DATUM \_\_\_\_\_

FIELD WORK DATE: 11/21/2018

### BASIS FOR MONUMENT LOCATION

1974 - PLS 881 LOCATION BY EDM TRAVERSE. FOUND OLD POST WITH CHARCOAL BELIEVED TO BE THE ORIGINAL CORNER. THIS LOCATION FITS GOOD IN ALL DIRECTIONS. SET A HARRISON MONUMENT AND TIED OUT.

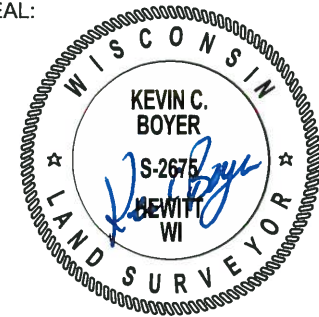
2018 - PLS 2675 FOUND A HARRISON MONUMENT WITH A BROKEN-TOP 8" BELOW THE GROUND SURFACE AND 2 WITNESS TREES. THE MONUMENT AGREES WITH THE EXISTING WITNESS TREES. ACCEPTED THE HARRISON MONUMENT WITH A BROKEN-TOP AS THE CORNER LOCATION. SET 4 NEW TIES AND MEASURED TO THE TIES AND WITNESS TREES.



### LOCATION

(INDICATE CORNER BY "X")

SEAL:



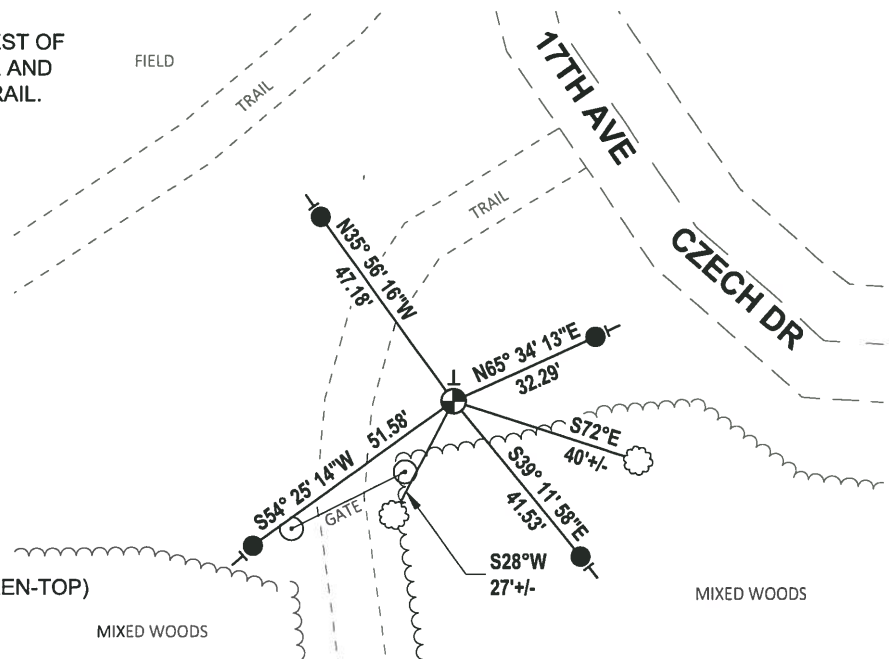
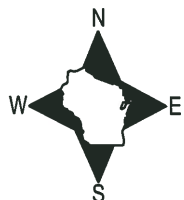
DATA SHOWN HERE ON THIS TIE SHEET IS CORRECT AND COMPLETE TO THE BEST OF MY KNOWLEDGE AND BELIEF.

PROFESSIONAL LAND SURVEYOR

DATE 12/4/2018

### - TIE SKETCH

NOTE: THE CORNER FALLS 62'± SOUTHWEST OF THE CENTERLINE OF 17TH AVE/CZECH DR AND 21'± EAST OF THE CENTERLINE OF THE TRAIL.



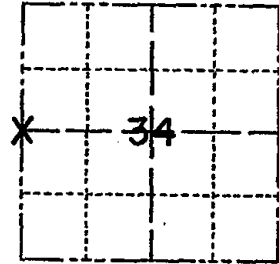
- SET 3/4" x 18" IRON REBAR, 1.50#/FT
- ⊕ FOUND HARRISON MONUMENT (BROKEN-TOP)
- VINYL "T" POST
- ☼ WITNESS TREE

# ADAMS COUNTY

## Survey Monument Record

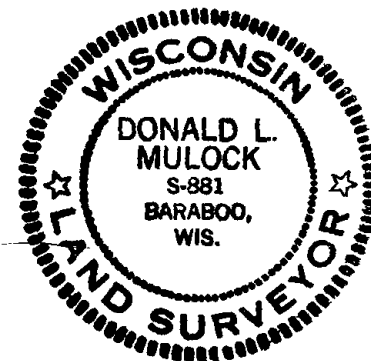
CORNER NO. 467  
SECTION 34  
TOWN 18N.  
RANGE 5E.

TYPE OF MONUMENT: HARRISON  
STATE PLANE COORDINATES: N 4644.00  
ASSUMED E 125.00  
ELEVATION — M.S.L. DATUM: \_\_\_\_\_  
THETA ANGLE: \_\_\_\_\_  
FIELD BOOK: ADAMS 440 PAGE -13-



LOCATION  
(Indicated by 'X')

SEAL:



### BASIS FOR MONUMENT LOCATION

(Use reverse side if necessary)

Show info such as: History of corner, with reference to Vol. and pg, dates, surveyor; exact description of monument replaced; if location computed, by taped or EDM traverse; landowner remarks, etc.

#### LOCATION BY E.D.M. TRAVERSE.

FOUND OLD POST WITH CHARCOAL BELIEVED TO BE ORIGINAL CORNER. FITS GOOD IN ALL DIRECTIONS. SET HARRISON MON WITH TIES, 3-6-74. (SEE BELOW)

COR OK 11-17-78 RN-SS  
3-2-83 GR-SS 1 TIE NEW  
8-18-92 BS 1-GONE TOP OF MON. BROKE BUT MON. STILL O.K.  
2-GONE, 3-NEW, TOP BROKEN OFF, 2-4-98-JG  
1-NEW 3-25-03 JG-SS  
OK, 12-11-01-36-35

CERTIFIED CORRECT:

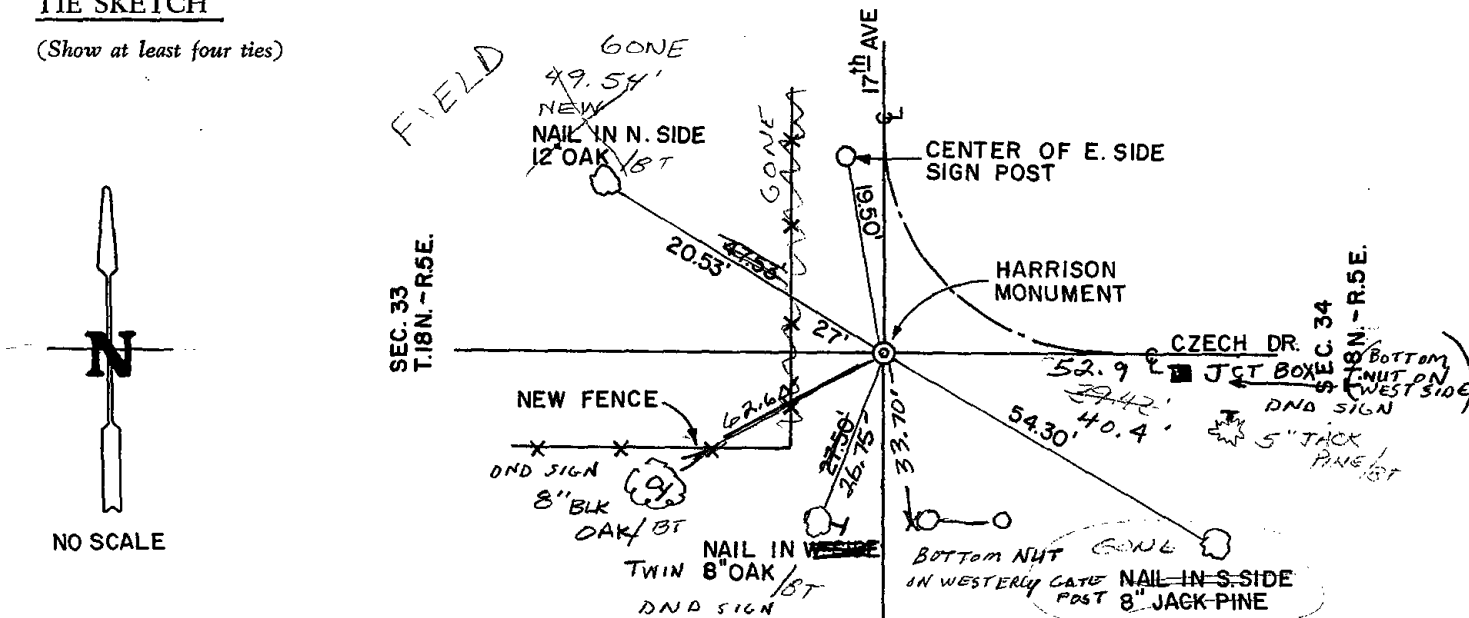
*Donald L. Mulock*

Registered Land Surveyor

DATE: MARCH 8 - 1974

### TIE SKETCH

(Show at least four ties)



NO SCALE