

34
SECTION

18
TOWN

05
RANGE

ADAMS COUNTY

COUNTY CORNER NO: 128

ROMPORTOL ID: 41805340020

PUBLIC LAND SURVEY MONUMENT RECORD

TYPE OF MONUMENT: HARRISON
ADAMS COUNTY COORDINATES, NAD 83 (2007)

N. 224115.194

E. 512525.318

ELEVATION- DATUM

FIELD WORK DATE: 12/20/2017

BASIS FOR MONUMENT LOCATION

1974 - PLS 881 LOCATED AN OLD FENCE CORNER WITH EXISTING WIRE IN ALL FOUR DIRECTIONS. AFTER E.D.M. TRAVERSE, THE CALCULATED LOCATION FITS GOOD. SHOWED THE CORNER TO THE CO. SURVEYOR (KIEDROWSKI) HE WAS IN AGREEMENT WITH THE CALCULATED LOCATION. SET A HARRISON MONUMENT AT THE CALCULATED LOCATION AND TIED OUT.

2017 - PLS 2994 FOUND A HARRISON MONUMENT FLUSH WITH THE GROUND SURFACE AND 2 WITNESS TREES. THE MONUMENT AGREES WITH THE EXISTING WITNESS TREES. ACCEPTED THE HARRISON MONUMENT AS THE CORNER LOCATION. SET 4 NEW TIES AND MEASURED TO THE TIES AND WITNESS TREE.



LOCATION
(INDICATE CORNER BY "X")

SEAL:



DATA SHOWN HERE ON THIS TIE SHEET IS CORRECT AND COMPLETE TO THE BEST OF MY KNOWLEDGE AND BELIEF.

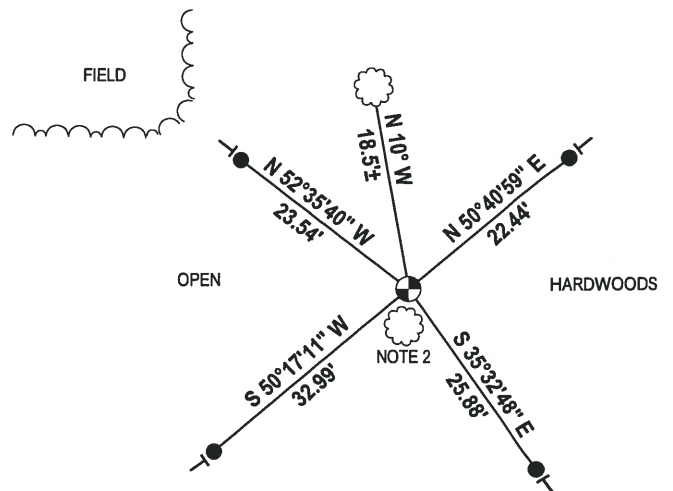
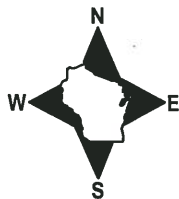
PROFESSIONAL LAND SURVEYOR

DATE 1-4-18

- TIE SKETCH

NOTE 1: THE CORNER FALLS 42± SOUTH-EAST OF THE EDGE OF THE FIELD.

NOTE 2: FOUND WITNESS TREE 2± SOUTH OF THE CORNER.



- 3/4" x 18" IRON REBAR SET, 1.50#/FT
- ⊕ HARRISON FOUND
- └ VINYL "T" POST
- ☼ WITNESS TREE FOUND

ADAMS COUNTY

Survey Monument Record

TYPE OF MONUMENT: HARRISON

~~STATE PLANE~~ COORDINATES: N 2001.98
ASSUMED E 2749.29

ELEVATION — M.S.L. DATUM: _____

THETA ANGLE: _____

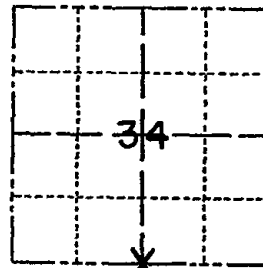
FIELD BOOK: 440 ADAMS PAGE -12-

CORNER NO. 466

SECTION 34

TOWN 18 N.

RANGE 5 E.



LOCATION
(Indicated by 'X')

SEAL:



BASIS FOR MONUMENT LOCATION

(Use reverse side if necessary)

Show info such as: History of corner, with reference to Vol. and pg, dates, surveyor; exact description of monument replaced; if location computed, by taped or EDM traverse; landowner remarks, etc.

FENCE CORNER FOUND WITH OLD WIRE IN FOUR DIRECTIONS. LOCATED BY E.D.M. TRAVERSE AND FITS GOOD. SHOWED CORNER TO CO. SURVEYOR (KIEDROWSKI) AND HE WAS IN AGREEMENT. SET HARRISON MON. WITH TIES, 3-5-74. (SEE BELOW)

CORNER OK. 10-31-75 D.M.S.S.
" FALL 1978
" 4-7-83 GR-55
" 2-2-93 JG-55

CERTIFIED CORRECT:

Donald L. Mulock
Registered Land Surveyor

DATE: MARCH 8-1974

TIE SKETCH 1- NEW 1-GONE MON, OK, 2-17-98 JG-55
2- NEW TIES 7-29-08 KS-55

(Show at least four ties)

